

**I. LINE HARDWARES**

	QTY	Unit
1 Anchor, Log	1	pcs
2 Bolt, Carriage, 3/8 X 4 1/2"	8	pcs
3 Bolt, Double Arming, 5/8 X 22"	6	pcs
4 Bolt, Machine, 1/2 X 10"	2	pcs
5 Bolt, Oval Eye, 5/8 X 12"	3	pcs
6 Bolt, Thimble Eye, 5/8 X 12"	1	pcs
7 Brace, Steel Crossarm Flat, 28"	8	pcs
8 Clamp, Deadend Strain, #2/0 - #4/0	6	pcs
9 Ciamp, Ground Rod, 5/8"	1	pcs
10 Clamp, Guy, 3-bolt Hd	2	pcs
11 Ciamp, Hotline, #2/0	6	pcs
12 Clevis, Secondary, Swinging	5	pcs
13 Conductor, Acsr Bare, #2/0	15	mtrs
14 Conductor, Acsr Bare, #2/7	60	mtrs
15 Conductor, Acsr Coated, #2/0	15	mtrs
16 Connector, U-bolt, #2/0 Loop Deadend	10	pcs
17 Crossarm, Steel, 3" X 4" X 8'	4	pcs
18 Insulator, Spool, 1 3/4"	2	pcs
19 Insulator, Spool, 3"	3	pcs
20 Insulator, Suspension, #10" Clevis Type, Polyr	6	pcs
21 Nut, Lock, 5/8"	6	pcs
22 Nut, Oval Eye, Conventional, 5/8"	8	pcs
23 Plate, Pole Number	1	pcs
24 Pole, Concrete, 35ft, I-type	1	pcs
25 Rod, Anchor, 5/8 X 7', Single Eye	1	pcs
26 Rod, Grounding, 5/8 X 10' Galvanized	1	unit
27 Washer, Square, 2 1/4 X 2 1/4 X 3/16	26	pcs
28 Washer, Square, 4 X 4 X 1/2	1	pcs
29 Wire, Grounding, #5/16, 3 Strands	15	mtrs
30 Wire, Guy, 3/8 X 7 Strand	11	mtrs

**II. LABOR COST**

	QTY	Unit
<b>Anchor Assembly</b>		
F2-1	(install)	1 assy
F2-1	(retire)	1 assy
<b>Conductoring Assembly</b>		
Conductor, Acsr Bare, #2/0	(install)	15 mtrs
Conductor, Acsr Bare, #2/0	(retire/install)	90 mtrs
Conductor, Acsr Coated, #2/0	(install)	15 mtrs
Conductor, Acsr Coated, #2/0	(retire/install)	240 mtrs
Conductor, Acsr Bare, #2/7	(install)	60 mtrs
Conductor, Acsr Bare, #2/7	(retire/install)	240 mtrs
<b>Grounding Assembly</b>		
M2-11a	(install)	1 assy
M2-11a	(retire)	1 assy
<b>Guy Assembly</b>		
E1-2	(install)	1 assy
E1-2	(retire)	1 assy

<b>Miscellaneous Assembly</b>		
M5-9 (23-27kv, 100a)	(retire/install)	3 assy
M5-1 (#2/0)	(retire/install)	5 assy
M5-6 (18kv)	(retire/install)	3 assy
<b>Pole Assembly</b>		
Pole, Concrete, 35'	(install)	1 assy
Pole, Concrete, 35'	(retire)	1 assy
<b>Pole Attachment</b>		
Communication Cables	(retire/install)	1 assy
Pole Clamp	(retire/install)	2 assy
Communication Box	(retire/install)	1 assy
<b>Primary Pole Assembly</b>		
C14b (8')	(retire)	1 assy
C7 (8') (#2/0 - #4/0)	(install)	2 assy
C7 (8') (#2/0 - #4/0)	(retire)	1 assy
<b>Secondary Assembly</b>		
J2	(retire/install)	1 assy
J6	(install)	3 assy
J6	(retire)	3 assy
J15 (#2/0)	(install)	2 assy
J15 (#2/0)	(retire)	2 assy
<b>Streetlight</b>		
Streetlight 70w	(retire/install)	1 assy
<b>Transformer Assembly</b>		
25kva, 23kv 240/120v	(retire/install)	3 assy
<b>Truck Hauling</b>		
Pole, Concrete, 35'	First 12Kms	2 assy
<b>Metering</b>		
15% of Metering Req.	(retire/install)	30%

**IV. SUPERVISION and MOBILIZATION COST**

(15% of Labor Cost)

**V. ADMINISTRATIVE COST**

15% of Labor Cost and Fuel Cost

**VI. EVAT Charges**

(12% of Labor, Mob, Sup, Admin Cost)

NSD FORM

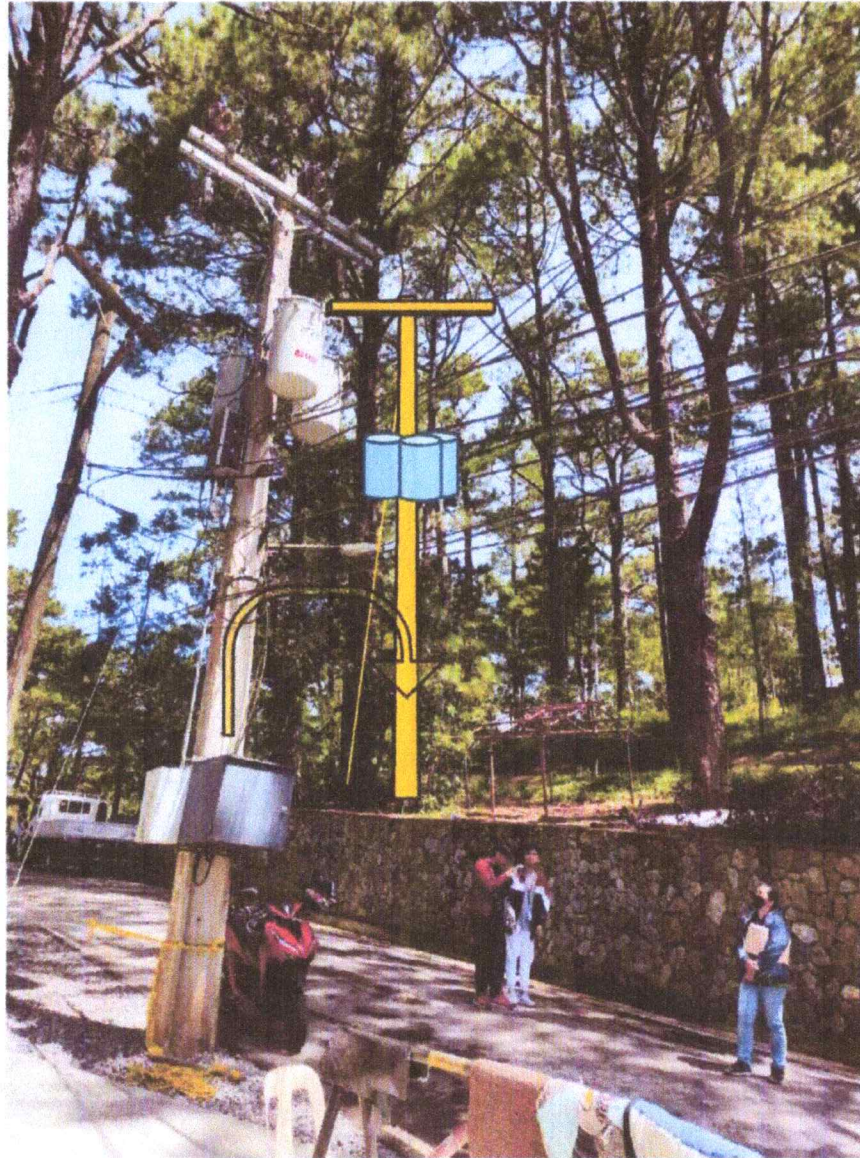
Doc. No.:

Revision No.:

LOCATION SKETCH

Effective Date:

Page:



Location:

JHMC, Camp John Hay, Baguio City

Prepared by:

Checked by:

Project Code: