

# **PHILIPPINE BIDDING DOCUMENTS**

(As Harmonized with Development Partners)

## **Procurement of INFRASTRUCTURE PROJECTS for the Construction of Parking Area and Improvement of Guardhouse at the JHMC Office Building**

Government of the Republic of the Philippines

**Sixth Edition  
July 2020**

# TABLE OF CONTENTS

<b>Glossary of Terms, Abbreviations, and Acronyms .....</b>	<b>4</b>
<b>Section I. Invitation to Bid.....</b>	<b>7</b>
<b>Section II. Instructions to Bidders .....</b>	<b>11</b>
1. Scope of Bid .....	12
2. Funding Information .....	12
3. Bidding Requirements.....	12
4. Corrupt, Fraudulent, Collusive, Coercive, and Obstructive Practices .....	13
5. Eligible Bidders .....	13
6. Origin of Associated Goods .....	13
7. Subcontracts .....	13
8. Pre-Bid Conference.....	14
9. Clarification and Amendment of Bidding Documents .....	14
10. Documents Comprising the Bid: Eligibility and Technical Components .....	14
11. Documents Comprising the Bid: Financial Component .....	15
12. Alternative Bids .....	15
13. Bid Prices .....	16
14. Bid and Payment Currencies .....	16
15. Bid Security .....	16
16. Sealing and Marking of Bids.....	16
17. Deadline for Submission of Bids.....	17
18. Opening and Preliminary Examination of Bids.....	17
19. Detailed Evaluation and Comparison of Bids .....	17
20. Post Qualification .....	18
21. Signing of the Contract .....	18
<b>Section III. Bid Data Sheet .....</b>	<b>19</b>
<b>Section IV. General Conditions of Contract.....</b>	<b>22</b>
1. Scope of Contract.....	23
2. Sectional Completion of Works .....	23
3. Possession of Site.....	23
4. The Contractor’s Obligations .....	23
5. Performance Security .....	24

6.	Site Investigation Reports .....	24
7.	Warranty.....	24
8.	Liability of the Contractor.....	24
9.	Termination for Other Causes .....	24
10.	Dayworks.....	25
11.	Program of Work .....	25
12.	Instructions, Inspections and Audits .....	25
13.	Advance Payment .....	25
14.	Progress Payments .....	25
15.	Operating and Maintenance Manuals .....	26
	<b>Section V. Special Conditions of Contract.....</b>	<b>27</b>
	<b>Section VI. Specifications .....</b>	<b>29</b>
	<b>Section VII. Drawings.....</b>	<b>38</b>
	<b>Section VIII. Bill of Quantities .....</b>	<b>39</b>
	<b>Section IX. Checklist of Technical and Financial Documents .....</b>	<b>49</b>

# *Glossary of Terms, Abbreviations, and Acronyms*

**ABC** – Approved Budget for the Contract.

**ARCC** – Allowable Range of Contract Cost.

**BAC** – Bids and Awards Committee.

**Bid** – A signed offer or proposal to undertake a contract submitted by a bidder in response to and in consonance with the requirements of the bidding documents. Also referred to as *Proposal* and *Tender*. (2016 revised IRR, Section 5[c])

**Bidder** – Refers to a contractor, manufacturer, supplier, distributor and/or consultant who submits a bid in response to the requirements of the Bidding Documents. (2016 revised IRR, Section 5[d])

**Bidding Documents** – The documents issued by the Procuring Entity as the bases for bids, furnishing all information necessary for a prospective bidder to prepare a bid for the Goods, Infrastructure Projects, and/or Consulting Services required by the Procuring Entity. (2016 revised IRR, Section 5[e])

**BIR** – Bureau of Internal Revenue.

**BSP** – Bangko Sentral ng Pilipinas.

**CDA** – Cooperative Development Authority.

**Consulting Services** – Refer to services for Infrastructure Projects and other types of projects or activities of the GOP requiring adequate external technical and professional expertise that are beyond the capability and/or capacity of the GOP to undertake such as, but not limited to: (i) advisory and review services; (ii) pre-investment or feasibility studies; (iii) design; (iv) construction supervision; (v) management and related services; and (vi) other technical services or special studies. (2016 revised IRR, Section 5[i])

**Contract** – Refers to the agreement entered into between the Procuring Entity and the Supplier or Manufacturer or Distributor or Service Provider for procurement of Goods and Services; Contractor for Procurement of Infrastructure Projects; or Consultant or Consulting Firm for Procurement of Consulting Services; as the case may be, as recorded in the Contract Form signed by the parties, including all attachments and appendices thereto and all documents incorporated by reference therein.

**Contractor** – is a natural or juridical entity whose proposal was accepted by the Procuring Entity and to whom the Contract to execute the Work was awarded. Contractor as used in these Bidding Documents may likewise refer to a supplier, distributor, manufacturer, or consultant.

**CPI** – Consumer Price Index.

**DOLE** – Department of Labor and Employment.

**DTI** – Department of Trade and Industry.

**Foreign-funded Procurement or Foreign-Assisted Project** – Refers to procurement whose funding source is from a foreign government, foreign or international financing institution as specified in the Treaty or International or Executive Agreement. (2016 revised IRR, Section 5[b]).

**GFI** – Government Financial Institution.

**GOCC** – Government-owned and/or –controlled corporation.

**Goods** – Refer to all items, supplies, materials and general support services, except Consulting Services and Infrastructure Projects, which may be needed in the transaction of public businesses or in the pursuit of any government undertaking, project or activity, whether in the nature of equipment, furniture, stationery, materials for construction, or personal property of any kind, including non-personal or contractual services such as the repair and maintenance of equipment and furniture, as well as trucking, hauling, janitorial, security, and related or analogous services, as well as procurement of materials and supplies provided by the Procuring Entity for such services. The term “related” or “analogous services” shall include, but is not limited to, lease or purchase of office space, media advertisements, health maintenance services, and other services essential to the operation of the Procuring Entity. (2016 revised IRR, Section 5[r])

**GOP** – Government of the Philippines.

**Infrastructure Projects** – Include the construction, improvement, rehabilitation, demolition, repair, restoration or maintenance of roads and bridges, railways, airports, seaports, communication facilities, civil works components of information technology projects, irrigation, flood control and drainage, water supply, sanitation, sewerage and solid waste management systems, shore protection, energy/power and electrification facilities, national buildings, school buildings, hospital buildings, and other related construction projects of the government. Also referred to as *civil works or works*. (2016 revised IRR, Section 5[u])

**LGUs** – Local Government Units.

**NFCC** – Net Financial Contracting Capacity.

**NGA** – National Government Agency.

**PCAB** – Philippine Contractors Accreditation Board.

**PhilGEPS** - Philippine Government Electronic Procurement System.

**Procurement Project** – refers to a specific or identified procurement covering goods, infrastructure project or consulting services. A Procurement Project shall be described, detailed, and scheduled in the Project Procurement Management Plan prepared by the agency which shall be consolidated in the procuring entity's Annual Procurement Plan. (GPPB Circular No. 06-2019 dated 17 July 2019)

**PSA** – Philippine Statistics Authority.

**SEC** – Securities and Exchange Commission.

**SLCC** – Single Largest Completed Contract.

**UN** – United Nations.

## ***Section I. Invitation to Bid***

## Invitation to Bid for Construction of Parking Area and Improvement of Guardhouse at the JHMC Office Building

1. The John Hay Management Corporation (JHMC), through the Corporate Operating Budget for CY 2022 intends to apply the sum of Five Million Five Hundred Thousand Pesos (PhP 5,500,000.00) being the Approved Budget for the Contract (ABC) to payments under the contract for the **Construction of Parking Area and Improvement of Guardhouse at the JHMC Office Building**. Bids received in excess of the ABC shall be automatically rejected at bid opening.
2. The JHMC now invites bids for the above Procurement Project. Completion of the Works required is One Hundred Twenty (120) Calendar Days. Bidders should have completed a contract similar to the Project. The description of an eligible bidder is contained in the Bidding Documents, particularly, in Section II (Instructions to Bidders).
3. Bidding will be conducted through open competitive bidding procedures using non-discretionary “pass/fail” criterion as specified in the 2016 revised Implementing Rules and Regulations (IRR) of Republic Act (RA) No. 9184.

JHMC allows the participation of prospective bidders through personal appearance or video conferencing. Bidders may submit their bids using the two (2) separate sealed bid envelopes system or **two (2) password-protected Bidding Documents in compressed archive folders, in case of electronic bid submission**, and which shall be submitted simultaneously. The first shall contain the technical component of the bid, including the eligibility requirements, and the second shall contain the financial component of the bid.

4. Interested bidders may obtain further information from Cottage 627, John Hay Management Corporation (JHMC) Office Complex, JHSEZ and inspect the Bidding Documents from 05 December 2022 to 27 December 2022 9:00 A.M to 2:00 P.M., Mondays to Fridays.
5. A complete set of Bidding Documents may be acquired by interested bidders on 05 December 2022 from Cottage 627, John Hay Management Corporation (JHMC) Office Complex, JHSEZ and website/s below and upon payment of the applicable fee for Bidding Documents, pursuant to the latest Guidelines issued by the GPPB, in the amount of Php 10,000.00. The Procuring Entity shall allow the bidder to present its proof of payment for the fees and may be presented in person, by facsimile, or through electronic means.



Interested bidders may personally pay for Bidding Documents at the Finance Department, Cottage 625, JHMC Office Complex, Camp John Hay, Baguio City.

Payment may also be done via electronic fund transfer or direct bank deposit using the following deposit details:

Payee Name: John Hay Management Corporation

Depository Bank: Development Bank of the Philippines Session Road, Baguio City

Branch Account Number: 0510-004308-031

6. The JHMC will hold a Pre-Bid Conference<sup>1</sup> at 10:00 AM on 15 December 2022 at the Bell House, Historical Core, John Hay Special Economic Zone, Baguio City and/or through videoconferencing/webcasting.

The Pre-bid conference will be conducted in person or face-to-face through video conferencing. Prospective Bidders who opt for video conferencing must inform the BAC Secretariat of their intent through the electronic mail address listed below. The Pre-Bid Conference is open to prospective bidders but attendance shall not be mandatory.

7. Bids must be duly received by the BAC Secretariat through manual submission at the Bell House, Historical Core, John Hay Special Economic Zone, Baguio City, on or before 9:30 A.M. on 27 December 2022. Late bids shall not be accepted.
8. All bids must be accompanied by a bid security in any of the acceptable forms and in the amount stated in **ITB** Clause 16.
9. Bid opening shall be at 10:00 A.M on 27 December 2022 at the Conference Room, JHMC Office Building, John Hay Special Economic Zone, Baguio City and/or through video conferencing. Bids will be opened in the presence of the bidders' representatives who choose to attend the activity.
10. In compliance with the health protocols against the COVID-19 Pandemic, JHMC is limiting the physical presence of participants for the Pre-bid conference and Bid Opening to ten (10) persons with one (1) representative from each prospective bidder. Selection of the ten (10) participants shall be based on the earliest time such a request was made. It is highly encouraged that other prospective bidders attend the Pre-Bid Conference and Bid Opening through video conferencing.

Prospective Bidders who are confirmed to attend in person shall submit themselves to the DOH and /or LGU permits/passes and certificates.

---

<sup>1</sup> May be deleted in case the ABC is less than One Million Pesos (PhP1,000,000) where the Procuring Entity may not hold a pre-bid conference.

11. The JHMC reserves the right to reject any and all bids, declare a failure of bidding, or not award the contract at any time prior to contract award in accordance with Sections 35.6 and 41 of the 2016 revised Implementing Rules and Regulations (IRR) of RA No. 9184, without thereby incurring any liability to the affected bidder or bidders.

12. For further information, please refer to:

DARWIN C. PEREZ  
Head, BAC Secretariat  
John Hay Management Corporation  
JHMC Office, Camp John Hay, Baguio City  
Telephone Number 074-424-5824  
E-mail: [bac@jhmc.com.ph](mailto:bac@jhmc.com.ph)

13. You may visit the following websites:

For downloading of Bidding Documents: [www.jhmc.com.ph](http://www.jhmc.com.ph)

(SGD.) **JANE THERESA G. TABALINGCOS**  
BAC Chairperson

---

## *Section II. Instructions to Bidders*

## 1. Scope of Bid

The Procuring Entity, John Hay Management Corporation invites Bids for the **Construction of Parking Area and Improvement of Guardhouse at the JHMC Office Building.**

The Procurement Project (referred to herein as “Project”) is for the construction of Works, as described in Section VI (Specifications).

## 2. Funding Information

2.1. The GOP through the source of funding as indicated below for Corporate Operating Budget for CY 2022 in the amount of Five Million Five Hundred Thousand Pesos (PhP 5,500,000.00)

2.2. The source of funding is:

JHMC Corporate Operating Budget 2023.

## 3. Bidding Requirements

The Bidding for the Project shall be governed by all the provisions of RA No. 9184 and its 2016 revised IRR, including its Generic Procurement Manual and associated policies, rules and regulations as the primary source thereof, while the herein clauses shall serve as the secondary source thereof.

Any amendments made to the IRR and other GPPB issuances shall be applicable only to the ongoing posting, advertisement, or invitation to bid by the BAC through the issuance of a supplemental or bid bulletin.

The Bidder, by the act of submitting its Bid, shall be deemed to have inspected the site, determined the general characteristics of the contracted Works and the conditions for this Project, such as the location and the nature of the work; (b) climatic conditions; (c) transportation facilities; (c) nature and condition of the terrain, geological conditions at the site communication facilities, requirements, location and availability of construction aggregates and other materials, labor, water, electric power and access roads; and (d) other factors that may affect the cost, duration and execution or implementation of the contract, project, or work and examine all instructions, forms, terms, and project requirements in the Bidding Documents.

#### **4. Corrupt, Fraudulent, Collusive, Coercive, and Obstructive Practices**

The Procuring Entity, as well as the Bidders and Contractors, shall observe the highest standard of ethics during the procurement and execution of the contract. They or through an agent shall not engage in corrupt, fraudulent, collusive, coercive, and obstructive practices defined under Annex “I” of the 2016 revised IRR of RA No. 9184 or other integrity violations in competing for the Project.

#### **5. Eligible Bidders**

- 5.1. Only Bids of Bidders found to be legally, technically, and financially capable will be evaluated.
- 5.2. The Bidder must have an experience of having completed a Single Largest Completed Contract (SLCC) that is similar to this Project, equivalent to at least fifty percent (50%) of the ABC adjusted, if necessary, by the Bidder to current prices using the PSA’s CPI, except under conditions provided for in Section 23.4.2.4 of the 2016 revised IRR of RA No. 9184.

A contract is considered to be “similar” to the contract to be bid if it has the major categories of work stated in the **BDS**.

- 5.3. For Foreign-funded Procurement, the Procuring Entity and the foreign government/foreign or international financing institution may agree on another track record requirement, as specified in the Bidding Document prepared for this purpose.
- 5.4. The Bidders shall comply with the eligibility criteria under Section 23.4.2 of the 2016 IRR of RA No. 9184.

#### **6. Origin of Associated Goods**

There is no restriction on the origin of Goods other than those prohibited by a decision of the UN Security Council taken under Chapter VII of the Charter of the UN.

#### **7. Subcontracts**

- 7.1. The Bidder may subcontract portions of the Project to the extent allowed by the Procuring Entity as stated herein, but in no case more than fifty percent (50%) of the Project.

The Procuring Entity has prescribed that:

- a. Subcontracting is not allowed.
- 7.1. The Bidder must submit together with its Bid the documentary requirements of the subcontractor(s) complying with the eligibility criterion stated in **ITB** Clause 5 in accordance with Section 23.4 of the 2016 revised IRR of RA No. 9184 pursuant to Section 23.1 thereof.
- 7.2. The Supplier may identify its subcontractor during the contract implementation stage. Subcontractors identified during the bidding may be changed during the implementation of this Contract. Subcontractors must submit the documentary requirements under Section 23.1 of the 2016 revised IRR of RA No. 9184 and comply with the eligibility criteria specified in **ITB** Clause 5 to the implementing or end-user unit.
- 7.3. Subcontracting of any portion of the Project does not relieve the Contractor of any liability or obligation under the Contract. The Supplier will be responsible for the acts, defaults, and negligence of any subcontractor, its agents, servants, or workmen as fully as if these were the Contractor's own acts, defaults, or negligence, or those of its agents, servants, or workmen.

## **8. Pre-Bid Conference**

The Procuring Entity will hold a pre-bid conference for this Project on the specified date and time and either at its physical address JHMC Conference Room, Sheridan Drive, Camp John Hay, Baguio City and/or through videoconferencing/webcasting as indicated in paragraph 6 of the **IB**.

## **9. Clarification and Amendment of Bidding Documents**

Prospective bidders may request for clarification on and/or interpretation of any part of the Bidding Documents. Such requests must be in writing and received by the Procuring Entity, either at its given address or through electronic mail indicated in the **IB**, at least ten (10) calendar days before the deadline set for the submission and receipt of Bids.

## **10. Documents Comprising the Bid: Eligibility and Technical Components**

- 10.1. The first envelope shall contain the eligibility and technical documents of the Bid as specified in **Section IX. Checklist of Technical and Financial Documents**.

- 10.2. If the eligibility requirements or statements, the bids, and all other documents for submission to the BAC are in foreign language other than English, it must be accompanied by a translation in English, which shall be authenticated by the appropriate Philippine foreign service establishment, post, or the equivalent office having jurisdiction over the foreign bidder's affairs in the Philippines. For Contracting Parties to the Apostille Convention, only the translated documents shall be authenticated through an apostille pursuant to GPPB Resolution No. 13-2019 dated 23 May 2019. The English translation shall govern, for purposes of interpretation of the bid.
- 10.3. A valid PCAB License is required, and in case of joint ventures, a valid special PCAB License, and registration for the type and cost of the contract for this Project. Any additional type of Contractor license or permit shall be indicated in the **BDS**.
- 10.4. A List of Contractor's key personnel (e.g., Project Manager, Project Engineers, Materials Engineers, and Foremen) assigned to the contract to be bid, with their complete qualification and experience data shall be provided. These key personnel must meet the required minimum years of experience set in the **BDS**.
- 10.5. A List of Contractor's major equipment units, which are owned, leased, and/or under purchase agreements, supported by proof of ownership, certification of availability of equipment from the equipment lessor/vendor for the duration of the project, as the case may be, must meet the minimum requirements for the contract set in the **BDS**.

## 11. Documents Comprising the Bid: Financial Component

- 11.1. The second bid envelope shall contain the financial documents for the Bid as specified in **Section IX. Checklist of Technical and Financial Documents**.
- 11.2. Any bid exceeding the ABC indicated in paragraph 1 of the **IB** shall not be accepted.
- 11.3. For Foreign-funded procurement, a ceiling may be applied to bid prices provided the conditions are met under Section 31.2 of the 2016 revised IRR of RA No. 9184.

## 12. Alternative Bids

Bidders shall submit offers that comply with the requirements of the Bidding Documents, including the basic technical design as indicated in the drawings and

specifications. Unless there is a value engineering clause in the **BDS**, alternative Bids shall not be accepted.

### 13. Bid Prices

All bid prices for the given scope of work in the Project as awarded shall be considered as fixed prices, and therefore not subject to price escalation during contract implementation, except under extraordinary circumstances as determined by the NEDA and approved by the GPPB pursuant to the revised Guidelines for Contract Price Escalation guidelines.

### 14. Bid and Payment Currencies

14.1. Bid prices may be quoted in the local currency or tradeable currency accepted by the BSP at the discretion of the Bidder. However, for purposes of bid evaluation, Bids denominated in foreign currencies shall be converted to Philippine currency based on the exchange rate as published in the BSP reference rate bulletin on the day of the bid opening.

14.2. *Payment of the contract price shall be made in:*

- a. Philippine Pesos.

### 15. Bid Security

15.1. The Bidder shall submit a Bid Securing Declaration or any form of Bid Security in the amount indicated in the **BDS**, which shall be not less than the percentage of the ABC in accordance with the schedule in the **BDS**.

15.2. The Bid and bid security shall be valid until One Hundred Twenty Days. Any bid not accompanied by an acceptable bid security shall be rejected by the Procuring Entity as non-responsive.

### 16. Sealing and Marking of Bids

Each Bidder shall submit one copy of the first and second components of its Bid.

The Procuring Entity may request additional hard copies and/or electronic copies of the Bid. However, failure of the Bidders to comply with the said request shall not be a ground for disqualification.



If the Procuring Entity allows the submission of bids through online submission to the given website or any other electronic means, the Bidder shall submit an electronic copy of its Bid, which must be digitally signed. An electronic copy that cannot be opened or is corrupted shall be considered non-responsive and, thus, automatically disqualified.

## 17. Deadline for Submission of Bids

The Bidders shall submit on the specified date and time and either at its physical address or through online submission as indicated in paragraph 7 of the **IB**.

## 18. Opening and Preliminary Examination of Bids

18.1. The BAC shall open the Bids in public at the time, on the date, and at the place specified in paragraph 9 of the **IB**. The Bidders' representatives who are present shall sign a register evidencing their attendance. In case videoconferencing, webcasting or other similar technologies will be used, attendance of participants shall likewise be recorded by the BAC Secretariat.

In case the Bids cannot be opened as scheduled due to justifiable reasons, the rescheduling requirements under Section 29 of the 2016 revised IRR of RA No. 9184 shall prevail.

18.2. The preliminary examination of Bids shall be governed by Section 30 of the 2016 revised IRR of RA No. 9184.

## 19. Detailed Evaluation and Comparison of Bids

19.1. The Procuring Entity's BAC shall immediately conduct a detailed evaluation of all Bids rated "*passed*" using non-discretionary pass/fail criteria. The BAC shall consider the conditions in the evaluation of Bids under Section 32.2 of 2016 revised IRR of RA No. 9184.

19.2. If the Project allows partial bids, all Bids and combinations of Bids as indicated in the **BDS** shall be received by the same deadline and opened and evaluated simultaneously so as to determine the Bid or combination of Bids offering the lowest calculated cost to the Procuring Entity. Bid Security as required by **ITB** Clause 16 shall be submitted for each contract (lot) separately.

19.3. In all cases, the NFCC computation pursuant to Section 23.4.2.6 of the 2016 revised IRR of RA No. 9184 must be sufficient for the total of the ABCs for all the lots participated in by the prospective Bidder.

## 20. Post Qualification

Within a non-extendible period of five (5) calendar days from receipt by the Bidder of the notice from the BAC that it submitted the Lowest Calculated Bid, the Bidder shall submit its latest income and business tax returns filed and paid through the BIR Electronic Filing and Payment System (eFPS), and other appropriate licenses and permits required by law and stated in the **BDS**.

## 21. Signing of the Contract

The documents required in Section 37.2 of the 2016 revised IRR of RA No. 9184 shall form part of the Contract. Additional Contract documents are indicated in the **BDS**.

## *Section III. Bid Data Sheet*

# Bid Data Sheet

ITB Clause			
5.2	For this purpose, contracts similar to the Project refer to contracts which have the same major categories of work, which shall be: <i>Open Parking, Grouted Riprap</i>		
7.1	Sub-contracting is not allowed.		
10.3	No further instructions.		
10.4	The key personnel must meet the required minimum years of experience set below:		
	<u>Key Personnel</u>	<u>General Experience</u>	<u>Relevant Experience</u>
	Project Engineer	Five (5) Years	General Construction and Engineering
	Materials Engineer	Five (5) Years	General Construction and Engineering
	Construction Safety and Health Officer	Five (5) Years	General Construction and Engineering
	Foreman	Five (5) Years	General Construction and Engineering
10.5	The minimum major equipment requirements are the following:		
	<u>Equipment</u>	<u>Capacity</u>	<u>Number of Unit(s)</u>
	Service Truck		One (1)
	Dump Truck	12 cu. yd	One (1)
	Backhoe	0.80 cu mt.	One (1)
	Vibratory Roller		One (1)
	Water Truck/Pump	1000 gls	One (1)
	Concrete Screeder		One (1)
	Concrete Saw		One (1)
	Cutting Outfit		One (1)
	Bar Cutter, Single Phase		One (1)
	Welding Machine		Two (2)
	Jackhammer		One (1)
	Bar Bender		One (1)
	One Bagger Mixer	4-6 ft <sup>3</sup> /min	One (1)
	Concrete Vibrator	Flexible shaft type 2” Head Ø w/ 5 Amperes Gasoline drive unit	One (1)
	Scaffoldings		Two hundred Eighty (280)

	Speed Cutter		Two (2)
	Welding Machine		Two (2)
12	No further instructions.		
15.1	<p>The bid security shall be in the form of a Bid Securing Declaration or any of the following forms and amounts:</p> <p>a. The amount of not less than 2% of ABC or One Hundred Ten Thousand Pesos (PhP 110,000.00), if bid security is in cash, cashier's/manager's check, bank draft/guarantee or irrevocable letter of credit;</p> <p>b. The amount of not less than 5% of ABC or Two Hundred Seventy Five Thousand Pesos (PhP 275,000.00) if bid security is in Surety Bond.</p>		
19.2	Partial bid is not allowed. The infrastructure project is packaged in a single lot and the lot shall not be divided into sub-lots for the purpose of bidding, evaluation, and contract award.		
20	Applicable JHMC Regulatory Permits/Licenses/Fees		
21	Additional contract documents relevant to the Project that may be required by existing laws and/or the Procuring Entity, such as construction schedule and S-curve, manpower schedule, construction methods, equipment utilization schedule, construction safety and health program approved by the DOLE, JHMC Construction Environment Management Plan (CEMP) and other acceptable tools of project scheduling.		

## ***Section IV. General Conditions of Contract***

## 1. Scope of Contract

This Contract shall include all such items, although not specifically mentioned, that can be reasonably inferred as being required for its completion as if such items were expressly mentioned herein. All the provisions of RA No. 9184 and its 2016 revised IRR, including the Generic Procurement Manual, and associated issuances, constitute the primary source for the terms and conditions of the Contract, and thus, applicable in contract implementation. Herein clauses shall serve as the secondary source for the terms and conditions of the Contract.

This is without prejudice to Sections 74.1 and 74.2 of the 2016 revised IRR of RA No. 9184 allowing the GPPB to amend the IRR, which shall be applied to all procurement activities, the advertisement, posting, or invitation of which were issued after the effectivity of the said amendment.

## 2. Sectional Completion of Works

If sectional completion is specified in the **Special Conditions of Contract (SCC)**, references in the Conditions of Contract to the Works, the Completion Date, and the Intended Completion Date shall apply to any Section of the Works (other than references to the Completion Date and Intended Completion Date for the whole of the Works).

## 3. Possession of Site

4.1. The Procuring Entity shall give possession of all or parts of the Site to the Contractor based on the schedule of delivery indicated in the **SCC**, which corresponds to the execution of the Works. If the Contractor suffers delay or incurs cost from failure on the part of the Procuring Entity to give possession in accordance with the terms of this clause, the Procuring Entity's Representative shall give the Contractor a Contract Time Extension and certify such sum as fair to cover the cost incurred, which sum shall be paid by Procuring Entity.

4.2. If possession of a portion is not given by the above date, the Procuring Entity will be deemed to have delayed the start of the relevant activities. The resulting adjustments in contract time to address such delay may be addressed through contract extension provided under Annex "E" of the 2016 revised IRR of RA No. 9184.

## 4. The Contractor's Obligations

The Contractor shall employ the key personnel named in the Schedule of Key Personnel indicating their designation, in accordance with **ITB** Clause 10.3 and specified in the **BDS**, to carry out the supervision of the Works.

The Procuring Entity will approve any proposed replacement of key personnel only if their relevant qualifications and abilities are equal to or better than those of the personnel listed in the Schedule.

## **5. Performance Security**

- 5.1. Within ten (10) calendar days from receipt of the Notice of Award from the Procuring Entity but in no case later than the signing of the contract by both parties, the successful Bidder shall furnish the performance security in any of the forms prescribed in Section 39 of the 2016 revised IRR.
- 5.2. The Contractor, by entering into the Contract with the Procuring Entity, acknowledges the right of the Procuring Entity to institute action pursuant to RA No. 3688 against any subcontractor be they an individual, firm, partnership, corporation, or association supplying the Contractor with labor, materials and/or equipment for the performance of this Contract.

## **6. Site Investigation Reports**

The Contractor, in preparing the Bid, shall rely on any Site Investigation Reports referred to in the SCC supplemented by any information obtained by the Contractor.

## **7. Warranty**

- 7.1. In case the Contractor fails to undertake the repair works under Section 62.2.2 of the 2016 revised IRR, the Procuring Entity shall forfeit its performance security, subject its property(ies) to attachment or garnishment proceedings, and perpetually disqualify it from participating in any public bidding. All payables of the GOP in his favor shall be offset to recover the costs.
- 7.2. The warranty against Structural Defects/Failures, except that occasioned-on force majeure, shall cover the period from the date of issuance of the Certificate of Final Acceptance by the Procuring Entity. Specific duration of the warranty is found in the SCC.

## **8. Liability of the Contractor**

Subject to additional provisions, if any, set forth in the SCC, the Contractor's liability under this Contract shall be as provided by the laws of the Republic of the Philippines.

If the Contractor is a joint venture, all partners to the joint venture shall be jointly and severally liable to the Procuring Entity.

## **9. Termination for Other Causes**

Contract termination shall be initiated in case it is determined *prima facie* by the Procuring Entity that the Contractor has engaged, before, or during the implementation of the contract, in unlawful deeds and behaviors relative to contract acquisition and implementation, such as, but not limited to corrupt, fraudulent, collusive, coercive, and obstructive practices as stated in **ITB** Clause 4.



## **10. Dayworks**

Subject to the guidelines on Variation Order in Annex “E” of the 2016 revised IRR of RA No. 9184, and if applicable as indicated in the **SCC**, the Dayworks rates in the Contractor’s Bid shall be used for small additional amounts of work only when the Procuring Entity’s Representative has given written instructions in advance for additional work to be paid for in that way.

## **11. Program of Work**

11.1. The Contractor shall submit to the Procuring Entity’s Representative for approval the said Program of Work showing the general methods, arrangements, order, and timing for all the activities in the Works. The submissions of the Program of Work are indicated in the **SCC**.

11.2. The Contractor shall submit to the Procuring Entity’s Representative for approval an updated Program of Work at intervals no longer than the period stated in the **SCC**. If the Contractor does not submit an updated Program of Work within this period, the Procuring Entity’s Representative may withhold the amount stated in the **SCC** from the next payment certificate and continue to withhold this amount until the next payment after the date on which the overdue Program of Work has been submitted.

## **12. Instructions, Inspections and Audits**

The Contractor shall permit the GOP or the Procuring Entity to inspect the Contractor’s accounts and records relating to the performance of the Contractor and to have them audited by auditors of the GOP or the Procuring Entity, as may be required.

## **13. Advance Payment**

The Procuring Entity shall, upon a written request of the Contractor which shall be submitted as a Contract document, make an advance payment to the Contractor in an amount not exceeding fifteen percent (15%) of the total contract price, to be made in lump sum, or at the most two installments according to a schedule specified in the **SCC**, subject to the requirements in Annex “E” of the 2016 revised IRR of RA No. 9184.

## **14. Progress Payments**

The Contractor may submit a request for payment for Work accomplished. Such requests for payment shall be verified and certified by the Procuring Entity’s Representative/Project Engineer. Except as otherwise stipulated in the **SCC**, materials and equipment delivered on the site but not completely put in place shall not be included for payment.

## **15. Operating and Maintenance Manuals**

- 15.1. If required, the Contractor will provide “as built” Drawings and/or operating and maintenance manuals as specified in the **SCC**.
- 15.2. If the Contractor does not provide the Drawings and/or manuals by the dates stated above, or they do not receive the Procuring Entity’s Representative’s approval, the Procuring Entity’s Representative may withhold the amount stated in the **SCC** from payments due to the Contractor.

## *Section V. Special Conditions of Contract*

# Special Conditions of Contract

GCC Clause	
2	Target date of completion is One Hundred twenty (120) Calendar Days upon the effectivity of the Notice to Proceed.
4.1	Upon issuance of Notice to Proceed.
6	The site investigation reports are: existing site conditions
7.2	In case of semi-permanent structures, such as buildings of types 1, 2, and 3 as classified under the National Building Code of the Philippines, and other similar semi-permanent structures: Five (5) years.
10	Dayworks are applicable at the rate shown in the Contractor's original Bid.
11.1	The Contractor shall submit the Program of Work to the Procuring Entity's Representative within Five (5) Calendar days from delivery of the Notice of Award.
11.2	The amount to be withheld for late submission of an updated Program of Work is One Thousand Pesos (Php1,000.00)
13	The amount of the advance payment is fifteen (15) percent to be released within 30 days from receipt of letter and other requirements.
14	No further instructions.
15.1	The date by which "as built" drawings are required is upon request for progress and final billings.
15.2	The amount to be withheld for failing to produce "as built" drawings by the date required is One Thousand Pesos (Php1,000.00) per day of non-submission.

# *Section VI. Specifications*

## **CONSTRUCTION OF OPEN PARKING AREA AND IMPROVEMENT OF GUARDHOUSE AT THE JHMC OFFICE BUILDING**

### **1. SCOPE OF WORK FOR BIDDERS**

- 1.1 To construct quality open parking area beside the new JHMC Office Building for employees and clients.
- 1.2 To cause the improvement of the JHMC Guardhouse (Camper 1) for convenience and improvement of services of frontline security guards on duty.
- 1.3 To impose required construction safety practices during the implementation of the project in compliance with the approved Occupational Safety and Health Program as required by the Department of Labor and Employment (DOLE).
- 1.4 To provide and maintain an accessible temporary field office/storage, portable toilets/latrines on approved locations for workers. The Contractor shall be held responsible for the maintenance and protection of all facilities to be provided during the duration of the Contract.
- 1.5 To provide the necessary, required, and sufficient manpower, materials and equipment during the course of the project implementation.
- 1.6 To conduct removal and proper disposal of structures and/or obstructions as indicated in the approved plans. All designated salvageable material shall be removed, without unnecessary damages, for safekeeping and turn-over to the end-user.
- 1.7 To properly and safely dispose all wastes generated during the construction phase in conformance with the approved Construction Environmental Management Plan (CEMP).
- 1.8 To supervise or monitor the presence of the assigned Project Personnel (Project Engineer/Facilitator, Materials Engineer and/or Safety Officer) as pledged in the bidding during project implementation.
- 1.9 To conduct site visits to familiarize with the on-site conditions and existing facilities.
- 1.10 To provide as-staked and as-built plans for the completed structure/s, one (1) set original CAD drawing in A3 size, two (2) additional copies, and electronic file (editable CAD file) of the following:
  - a. Actual layout and location of the structures constructed,
  - b. Details of the constructed structure, and,
  - c. All other details of the project that may be required.
- 1.11 As-built plans shall indicate the details specified in Section 1.9 in any scale not less than 1:100 meters
- 1.12 To submit weekly Statement of Work Accomplishment reports during the duration of the Contract.
- 1.13 To shoulder all costs for power and water utilities to be used during the implementation of the project.
- 1.14 The contractor shall be responsible for all tests and engineering services required by the Specifications. The cost for inspection or test not required by the specifications but which are required by JHMC, will be borne by JHMC.
- 1.15 All tests shall be performed by accredited testing facilities and approved by JHMC, and shall be in accordance with the current standards of the American Society for testing and materials, otherwise specified by JHMC. Two (2) copies of the test procedures including results shall be furnished to JHMC.
- 1.16 To immediately report to JHMC all unearthed hazardous materials, buried treasures or artifacts, and shall be coordinated by JHMC to the concerned agencies for their appropriate

- action. All activities in area of concern shall cease until such time that the hazardous materials, treasures have been properly dealt with.
- 1.17 Contractor shall ensure that there will be no smoking, drinking of alcoholic beverages, spitting of momma, loitering among construction workers assigned in the construction premises.
  - 1.18 The contractor should perform regulated test to prove that all electricals/ electrically powered materials area working, as designed in its function.
  - 1.19 All electronic products should pass all test necessary to promote safety during the installation and operation of the signages requiring power/ lighting.
  - 1.20 Contractor shall restore all damaged property during the project implementation to its original state.
  - 1.21 To shoulder all costs of permits necessary for the implementation of the project.

## **2. STANDARDS and SPECIFICATIONS**

The scope of work shall be in conformity with the DPWH standards and specifications stated herein.

### **B.5 - PROJECT BILLBOARD/ SIGNBOARD**

For the information and guidance of the citizenry about the on-going projects being undertaken by JHMC, standard project billboards (JHMC and COA) shall be installed on the vicinity of the project using the standard design as shown in the Plan. Billboard should be properly framed and installed in the most visible location within the vicinity of the project.

### **B.7(1) - OCCUPATIONAL SAFETY AND HEALTH PROGRAM**

This Item shall be in accordance with the provisions, systems and procedures based in the approved and applicable Occupational Safety and Health Program by the Department of Labor and Employment. Appropriate Personal Protective Equipment (PPE), including all safety devices that are necessary during project implementation, shall be provided by the contractor/project owner.

### **B.9. – MOBILIZATION/ DEMOBILIZATION**

Prior to mobilization of equipment and materials on site, the contractor shall coordinate with JHMC for the approved areas to be used for stockpiling of materials and parking of equipment on site. No construction materials or equipment should obstruct main access points within the vicinity of the project.

### **Item 103 - STRUCTURE EXCAVATION**

All surface objects and all trees, stumps, roots and other protruding obstructions, not designated to remain, shall be cleared and/or grubbed, and disposed outside the clearing and grubbing limits as indicated.

All excavations shall be finished to reasonably smooth and uniform surfaces. No materials shall be wasted without authority of the contractor's Engineer and the JHMC Representative. Prior to excavation, all necessary clearing and grubbing in that area shall have been performed in accordance with Item Clearing and Grubbing.

All suitable materials removed from the excavation shall be used in the formation of the embankment, subgrade, shoulders, slopes, bedding, and backfill for structures, and for other purposes shown on the Plans or as directed. All unsuitable materials shall be disposed of as shown on the Plans or as directed without delay by the Contractor. Only approved materials shall be used in the construction of embankments and backfills.

All excess materials, including rock and boulders that cannot be used in embankments shall be disposed of as directed.

#### **Item 103 – EMBANKMENT (FROM BORROW)**

The item consists of embankment of excavated areas, or areas with lower elevation. Embankment material mostly comes from excavation/ from borrow. Proper compaction should be followed during the embankment process, with adequate compaction by plate compactor/ vibratory roller every 150mm thick layer of embankment material placed. This method should be carried out by the contractor until the proposed layer/ level is attained. No other materials should be mixed with the embankment.

#### **Item 201 – AGGREGATE BASE COURSE**

Aggregate Base Course shall consist of natural or artificial mixtures on natural or crushed gravel, crushed stone or slag. Furnishing, placing and compaction of aggregate base and subbase must be in accordance with the DPWH Standards.

#### **Item 311 – PORTLAND CEMENT CONCRETE PAVEMENT (PCC), 280MM THICK-14 DAYS**

It shall conform to the applicable requirement of Portland cement Type I, meeting the requirements stated at DPWH Standards Item 311.

#### **ITEM 401 - METAL RAILINGS**

Handrails/ metal railing to be constructed shall be 50mm diameter Galvanized Iron Pipes, Schedule 40, clean and rust-free. Concrete footing and dowel bars should be well prepared and poured according to plans and as stated. All steel pipes shall be accurately placed the position with proper spacing based on the approved plans.

Alignment of the handrails to be constructed should be straight and fully welded, furnished with paint after sanding or preparation of the connections to be even for the safety of the public. Railings shall be placed and then inspected and approved by the JHMC representative before the placing of concrete begins of finalization of the layout. Materials placed in violation of this provision may be rejected and removal may be required.

### **ITEM 505 – GROUTED RIPRAP (CLASS A)**

This Item shall consist of the furnishing and placing of riprap with or without grout as the case maybe, with or without filter backing, furnished and constructed in accordance with this Specifications and to the lines and grades and dimensions shown on plans. Stones for riprap shall consist of rock as nearly as rectangular in section as is practical, except that riprap of class A may consist of round natural stones. The stones shall be sound, tough, durable, dense, resistant to the action of air and water and suitable in all respects for the purpose intended. Stones for riprap shall be class A- stones ranging from a minimum of 15kg to a maximum of 25kg with at least 50 percent of the stones weighing more than 20 kg. Mortar for grouted riprap shall consist of sand, cement and water conforming to the requirements given under Item 405, Structural Concrete, mixed in the proportion of one part cement to three parts sands by volume and sufficient water to obtain the required consistency. All walls of the abutments shall be provided with weepholes. Unless otherwise shown on plans or as directed by the Engineer, the weepholes shall be placed horizontally at the lowest points where free outlets for water can be obtained and shall be spaced at not more than 2m center to center in staggered manner. The length of the weepholes shall not be less than the thickness of the walls of the abutment and shall be at least 50mm diameter PVC or other pipe material accepted by the Engineer. Weepholes must be provided with filter bags as specified provisions or as directed by the Engineer, and shall be incidental.

### **ITEM 508 – HAND LAID ROCK EMBANKMENT**

Hand-Laid Rock Embankment consist of hand-laid rock embankment, as designated in the Bid Schedule, constructed in accordance with this Specification and in conformity with the lines and grades shown on the Plans or established by the Engineer.

Stones shall be sound and durable and furnished in a well-balanced ranged of sizes meeting the requirements herein. Unless otherwise provided by the Plans or Special provisions, all stones shall be more than 0.015 cubic meter in volume and not less than 75 percent of the total volume of rock embankment and shall consists of stones 0.03cubic meter in volume. Stones obtained from excavation performed under this contract may be used. Adobe stone shall not be used, unless otherwise specified.

Sufficient excavation shall be made to expose a foundation bed that is satisfactory to the Engineer. The stones shall be founded on this bed and laid to the lines and dimensions required. Stones shall be laid flat and securely placed with broken joint lines. The larger stones shall generally be located in the lower part of the structure and voids shall be eliminated to the extent possible. Spalls smaller than the minimum stone size specified in earlier shall be used to check the larger stones solidly in position and to substantially fill voids between the major stones as laid in the embankment. The exposed face of the rock mass shall be reasonably uniform, with no projections of more than 150mm, beyond the neat lines shown on the Plans or as directed by the Engineer. Backfill adjacent to the hand-laid rock embankment shall be filled entirely with acceptable material coming from excavation items and compacted.

### **ITEM 900(2) STRUCTURAL CONCRETE – 14 DAYS**

Concrete shall consist of a mixture of Portland cement, fine aggregate, coarse aggregate, admixture when specified, and water mixed in the proportions specified or approved by the JHMC representative.

The class of concrete to be used is **Class A**. Only Type I Portland Cement shall be used



unless otherwise provided for in the Special Provisions. Different brands or the same brands from different mills shall not be mixed nor shall they be used alternately unless the mix is approved by the Engineer.

Fine Aggregate shall consist of natural sand, stone screenings or other inert materials with similar characteristics, or combinations thereof, having hard, strong and durable particles.

Coarse Aggregate shall consist of crushed stone, gravel, blast furnace slag, or other approved inert materials (coralline or dolomites) of similar characteristics, or combinations thereof, having

hard, strong, durable pieces and free from any adherent coatings. Water used in mixing, curing or other designated application shall be reasonably clean and free of oil, salt, acid, alkali, grass or other substances injurious to the finished product.

As work progresses, at least one (1) sample consisting of three (3) concrete cylinder test specimens, 150 x 300mm (6 x 12 inches), shall be taken from each seventy-five (75) cubic meters of each class of concrete or fraction thereof placed each day.

#### **ITEM 902(1) – REINFORCING STEEL – DEFORMED (GRADE 40)**

Steel reinforcements to be used shall be Grade 40 deformed steel bars, clean and rust-free. Minimum concrete cover for reinforcement is 50mm and 75mm for those exposed to soil/under earth. All steel reinforcements shall be accurately placed the position with proper spacing based on the approved plans.

Distance from the forms shall be maintained by means of stays, blocks, ties, hangers, or other approved supports. The use of pebbles, pieces of broken stone or brick, metal pipe and wooden blocks shall not be permitted. Reinforcement in any member shall be placed and then inspected and approved by the JHMC representative before the placing of concrete begins. Concrete placed in violation of this provision may be rejected and removal may be required.

#### **ITEM 1003 - CARPENTRY AND JOINERY WALLS**

The work under this Item shall consist of furnishing all required materials, unless stated to be provided by JHMC, fabricated wood work, tools equipment and labor and performing all operations necessary for the satisfactory completion of all carpentry and joinery works in strict accord with applicable drawings, details and this Specifications.

Nails, screw, bolts and straps shall be provided and used where suitable for fixing carpentry and joinery works. All fasteners shall be brand new and of adequate size to ensure rigidity of connections.

#### **ITEM 1010 – DOORS AND WINDOWS**

This item shall consist of all fabricated wooden windows fully equipped with fixing accessories and locking devices as shown on the Plans and in accordance with this Specification. Installed windows and doors shall be smooth finished with white paint.

#### **ITEM 1014 – PRE-PAINTED METAL SHEETS**

This item shall consist of furnishing all the required pre-painted metal sheet, materials, tools and equipment, unless stated to be provided by JHMC, in undertaking the proper installation complete as show on the Plans and in accordance with this Specification.

Before any installation work is commenced, the Contractor shall ascertain that the top face of the purlins is in proper alignment. Correct the alignment as necessary in order to have the top faces of the purlins on an even plane. Sheets shall be handled carefully to prevent damage to the paint coating.

Gutters, valleys, flashing ridge and hip rolls be fastened where indicated on the Plans by self-tapping screws or rivets.

#### **ITEM 1027 – CEMENT PLASTER FINISH**

This Item shall consist of furnishing all cement plaster materials, labor, tools and equipment required in undertaking cement plaster finish as shown on the Plans and in accordance with this Specification.

Mortar mixture for brown coat shall be freshly prepared and uniformly mixed in the proportion by volume of one (1) part Portland Cement, three (3) parts sand and one fourth (1/4) part hydrated lime. Finish coat shall be pure Portland cement properly graded Hydraulic Cement and mixed with water to approved consistency and plasticity.

Cement plaster finish shall be true to details and plumbed. Finish surface shall have no visible junction marks where one (1) day's work adjoins the other. Where directed by the Engineer or shown on the Plans vertical and horizontal groove joints shall be 25 mm wide and 10 mm deep.

#### **ITEM 1032 – PAINTING, VARNISHING, AND OTHER RELATED WORKS**

This Item shall consist of furnishing and applying all paint materials including pigments, thinners and mixed paints for steel and wooden structures; sampling, testing and packing; preparation of the surface and application of paint to structures.

Applicable paint on primed and prepped surfaces shall be used for the constructed comfort rooms and existing control points 3, 4, at BCC gate and VOA Gate. Paint shall not be applied during rain, storms or when the air is misty, or when, in the opinion of the Engineer, conditions are otherwise unsatisfactory for the work. Paint shall not be applied upon damp surfaces or upon metal which has absorbed heat sufficient to cause the paint to blister and produce a pervious paint film.

Surfaces of metals to be painted shall be thoroughly cleaned of rust, loose mill, scale, dirt, oil or grease, and other foreign substances. Unless cleaning is to be done by sandblasting, all weld areas, before cleaning is begun, shall be neutralized with a proper chemical, after which they shall be thoroughly rinsed with water.

When called for on the Plans or in the Special Provisions, existing structures shall be given the two coats of field paint as stipulated.

#### **ITEM 1046 – CHB NON-LOAD BEARING (INCLUDING RSB), 100 mm THICK**

Concrete hollow blocks shall be standard machine fabricated and shall have fine and even texture and well- defined edges. Dimensions and tolerances shall be as individually

specified on the Plans. Unless otherwise indicated on the Plans, masonry mortar shall be composed of one (1) part Portland cement, and two (2) parts fine aggregate by volume to which hydrated lime has been added in an amount equal to ten (10) mass percent of the cement.

Unless otherwise specified, the vertical and horizontal reinforcements for CHB shall be 10mm diameter at 400 for all wall thicknesses. Lap splices shall be 300 mm long (minimum).

Where CHB walls adjoin R.C. columns and beams provide dowels on R.C. column and beams prior to pouring to match CHB wall reinforcement size and spacing. Dowels shall be 600 mm long unless noted otherwise. Corners shall be protected from damage, with substantial board covers. Mortar or grout stains on masonry work shall be removed immediately. Any masonry work showing stains from mortar or concrete, or grout at completion of work, shall be replaced or the entire masonry surface sandblasted to provide uniform approved appearance.

#### **ITEM 1047(1) – STRUCTURAL STEEL**

The work will include the furnishing, fabricating, hauling, erecting, welding and painting of structural steel as shown on the Plans. Structural metals will include structural steel, rivet, welding, special and alloy steels, steel forgings and castings and iron castings. This work will also include any incidental metal construction not otherwise provided for, all in accordance with these Specifications, Plans and Special Provisions.

#### **ITEM 1047 (10) – METAL STRUCTURES**

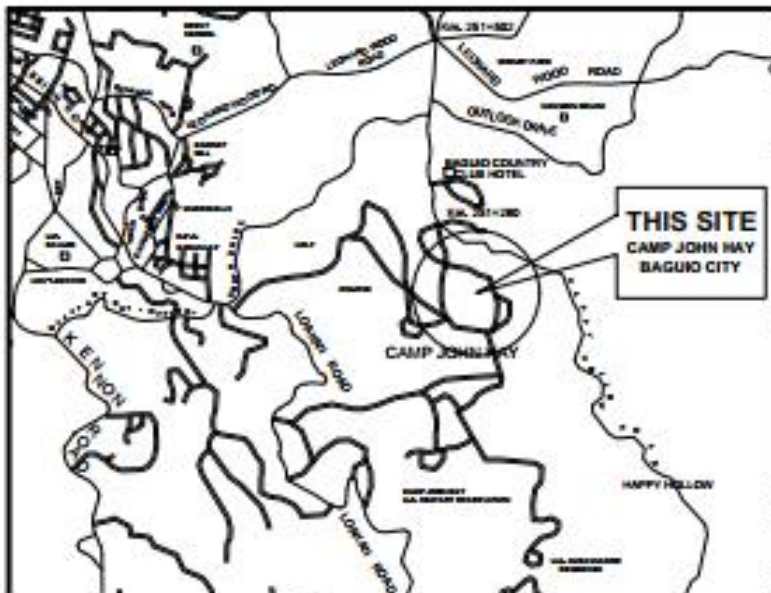
##### **ELECTRICAL WORKS**

The Contractor shall furnish all materials, labor and equipment for the installation of the complete electrical system of the proposed structure, including concealed conduct system (unless otherwise noted). Wires and all wiring devices for electrical lighting and power layout shall be in conformance with the approved plans/drawings.

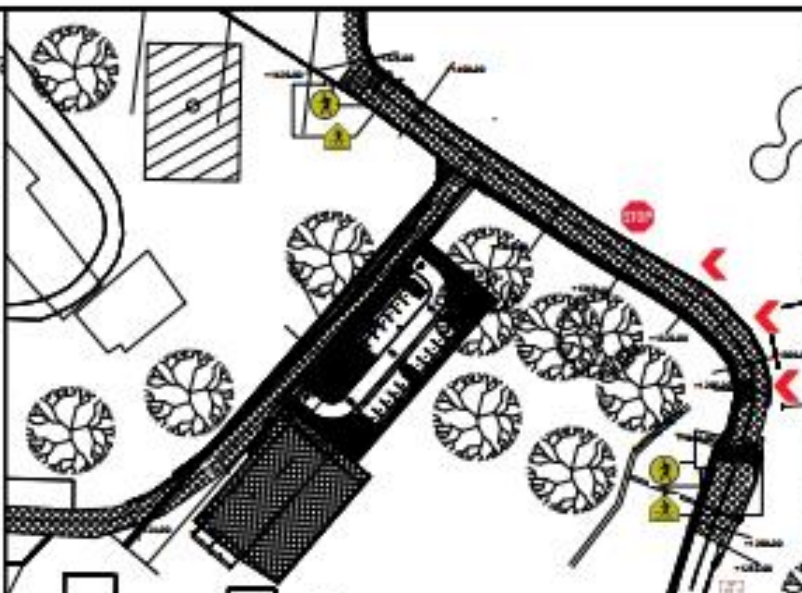
All works under shall comply with the latest edition of the Philippine Electrical Code Rules and Regulations. Any apparent conflict between such shall be submitted to the Engineer/Architect for decision. All labor shall be done in the promptest and workman like manner for the full satisfaction of the Engineer/Architect and the Implementing Office. The Contractor shall complete the electrical system satisfactorily working. Equipment, labor and materials that are found unsatisfactory and defective prior to the issuance of final acceptance will be subjected for replacement, without additional charge or cost.



*Section VII. Drawings*  
**DRAWINGS**



1 VICINITY MAP  
SCALE: 1:50,000



3 SITE DEVELOPMENT PLAN  
SCALE: 1:1,000

INDEX OF DRAWINGS	
A1 1/1	VICINITY MAP, SITE DEVELOPMENT MAP, SUMMARY OF QUANTITIES, INDEX OF DRAWINGS, SPECIFICATIONS
A2 2/1	JHMC PARKING AREA ELEVATION PLAN JHMC PARKING AREA PLAN
A3 3/1	PROPOSED SIDEWALK DETAIL COA PROJECT SIGNBOARD DETAIL PARKING AREA SECTION THRU IMP DETAIL PARKING AREA SECTION THRU GATE DETAIL PARKING AREA SECTION THRU GATE DETAIL
A4 4/1	PROPOSED GUARD HOUSE - ELEVATION PLAN
55 5/1	PROPOSED GUARD HOUSE - PLAN DETAILS
56 6/1	PROPOSED SHED - PLAN DETAILS
57 7/1	PROPOSED SHED - TRUSS CONNECTION DETAIL PROPOSED SHED - TRUSS DETAIL CURB AND GUTTER DETAIL SIDEWALK CURB RAMP DETAIL PROPOSED GROUTED RAMP DETAIL
58 8/1	ORIGINAL FOOTING, BEAM, COLUMN DETAIL ORIGINAL DETAIL PLAN/SECTION DETAIL DRAWING WITH STEEL GRATING DETAIL
59 9/1	ORIGINAL FOOTING, BEAM, COLUMN DETAIL SHED ELECTRICAL LAYOUT PARKING ELECTRICAL LAYOUT LIGHT POLE DETAIL



2 LOCATION MAP  
SCALE: 1:50,000

ITEM NO.	DESCRIPTION	QTY	UNIT	REMARKS
51	PROPOSED SIDEWALK/CONCRETE	100	SQ.M	200 X 1,000
52	PROPOSED SIDEWALK/CONCRETE	100	SQ.M	200 X 1,000
53	PROPOSED SIDEWALK/CONCRETE	100	SQ.M	200 X 1,000
54	PROPOSED SIDEWALK/CONCRETE	100	SQ.M	200 X 1,000
55	PROPOSED SIDEWALK/CONCRETE	100	SQ.M	200 X 1,000
56	PROPOSED SIDEWALK/CONCRETE	100	SQ.M	200 X 1,000
57	PROPOSED SIDEWALK/CONCRETE	100	SQ.M	200 X 1,000
58	PROPOSED SIDEWALK/CONCRETE	100	SQ.M	200 X 1,000
59	PROPOSED SIDEWALK/CONCRETE	100	SQ.M	200 X 1,000
60	PROPOSED SIDEWALK/CONCRETE	100	SQ.M	200 X 1,000
61	PROPOSED SIDEWALK/CONCRETE	100	SQ.M	200 X 1,000
62	PROPOSED SIDEWALK/CONCRETE	100	SQ.M	200 X 1,000
63	PROPOSED SIDEWALK/CONCRETE	100	SQ.M	200 X 1,000
64	PROPOSED SIDEWALK/CONCRETE	100	SQ.M	200 X 1,000
65	PROPOSED SIDEWALK/CONCRETE	100	SQ.M	200 X 1,000
66	PROPOSED SIDEWALK/CONCRETE	100	SQ.M	200 X 1,000
67	PROPOSED SIDEWALK/CONCRETE	100	SQ.M	200 X 1,000
68	PROPOSED SIDEWALK/CONCRETE	100	SQ.M	200 X 1,000
69	PROPOSED SIDEWALK/CONCRETE	100	SQ.M	200 X 1,000
70	PROPOSED SIDEWALK/CONCRETE	100	SQ.M	200 X 1,000
71	PROPOSED SIDEWALK/CONCRETE	100	SQ.M	200 X 1,000
72	PROPOSED SIDEWALK/CONCRETE	100	SQ.M	200 X 1,000
73	PROPOSED SIDEWALK/CONCRETE	100	SQ.M	200 X 1,000
74	PROPOSED SIDEWALK/CONCRETE	100	SQ.M	200 X 1,000
75	PROPOSED SIDEWALK/CONCRETE	100	SQ.M	200 X 1,000
76	PROPOSED SIDEWALK/CONCRETE	100	SQ.M	200 X 1,000
77	PROPOSED SIDEWALK/CONCRETE	100	SQ.M	200 X 1,000
78	PROPOSED SIDEWALK/CONCRETE	100	SQ.M	200 X 1,000
79	PROPOSED SIDEWALK/CONCRETE	100	SQ.M	200 X 1,000
80	PROPOSED SIDEWALK/CONCRETE	100	SQ.M	200 X 1,000
81	PROPOSED SIDEWALK/CONCRETE	100	SQ.M	200 X 1,000
82	PROPOSED SIDEWALK/CONCRETE	100	SQ.M	200 X 1,000
83	PROPOSED SIDEWALK/CONCRETE	100	SQ.M	200 X 1,000
84	PROPOSED SIDEWALK/CONCRETE	100	SQ.M	200 X 1,000
85	PROPOSED SIDEWALK/CONCRETE	100	SQ.M	200 X 1,000
86	PROPOSED SIDEWALK/CONCRETE	100	SQ.M	200 X 1,000
87	PROPOSED SIDEWALK/CONCRETE	100	SQ.M	200 X 1,000
88	PROPOSED SIDEWALK/CONCRETE	100	SQ.M	200 X 1,000
89	PROPOSED SIDEWALK/CONCRETE	100	SQ.M	200 X 1,000
90	PROPOSED SIDEWALK/CONCRETE	100	SQ.M	200 X 1,000
91	PROPOSED SIDEWALK/CONCRETE	100	SQ.M	200 X 1,000
92	PROPOSED SIDEWALK/CONCRETE	100	SQ.M	200 X 1,000
93	PROPOSED SIDEWALK/CONCRETE	100	SQ.M	200 X 1,000
94	PROPOSED SIDEWALK/CONCRETE	100	SQ.M	200 X 1,000
95	PROPOSED SIDEWALK/CONCRETE	100	SQ.M	200 X 1,000
96	PROPOSED SIDEWALK/CONCRETE	100	SQ.M	200 X 1,000
97	PROPOSED SIDEWALK/CONCRETE	100	SQ.M	200 X 1,000
98	PROPOSED SIDEWALK/CONCRETE	100	SQ.M	200 X 1,000
99	PROPOSED SIDEWALK/CONCRETE	100	SQ.M	200 X 1,000
100	PROPOSED SIDEWALK/CONCRETE	100	SQ.M	200 X 1,000

4 SUMMARY OF QUANTITIES  
SCALE: 1:1,000

Republic of the Philippines  
Office of the President  
**JHMC**  
JOHN HAY MANAGEMENT CORPORATION

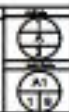
APPROVED BY: *[Signature]*  
ARCHITECT & ENGINEER

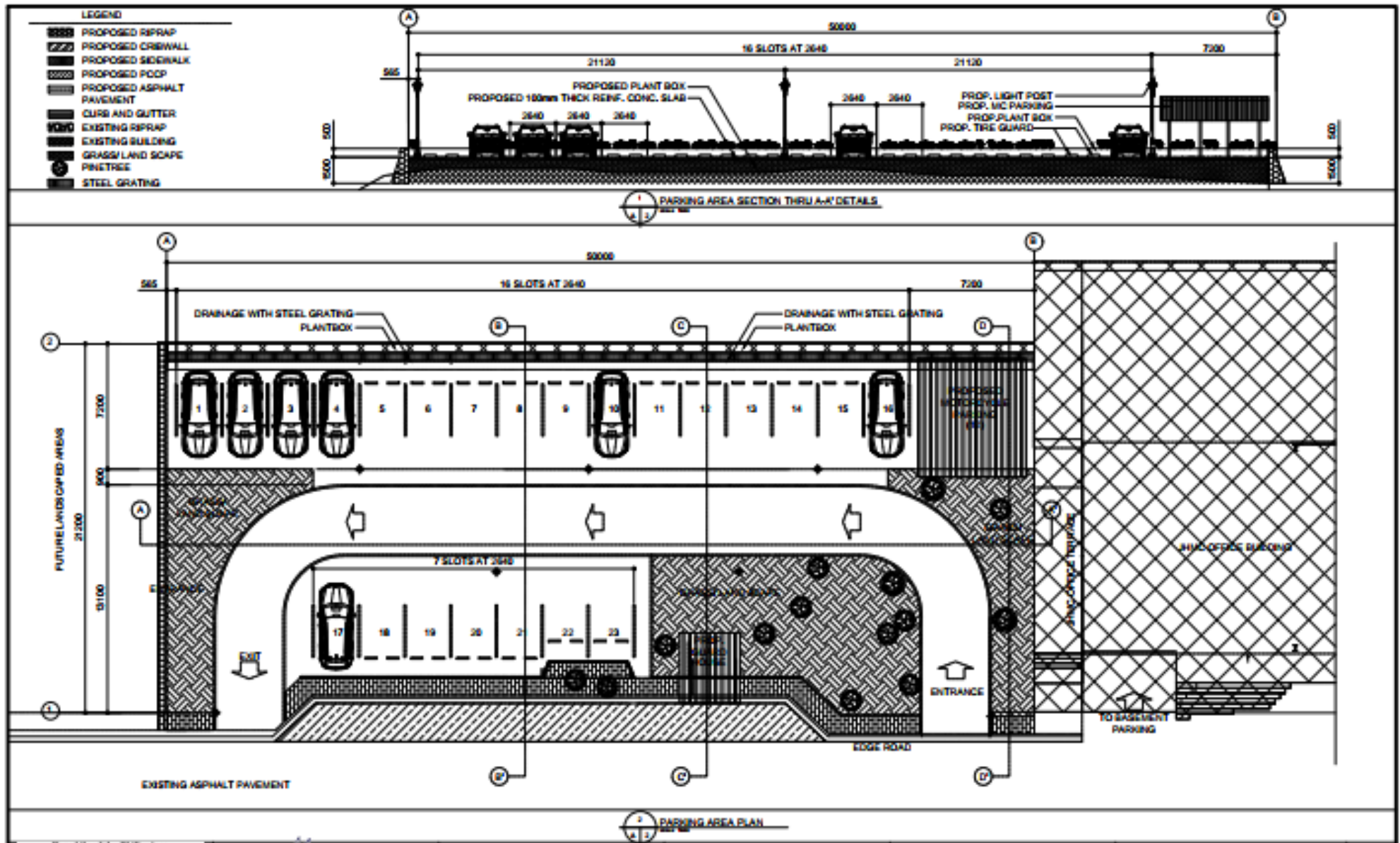
APPROVED BY: *[Signature]*  
LAWYER/LEGAL COUNSEL

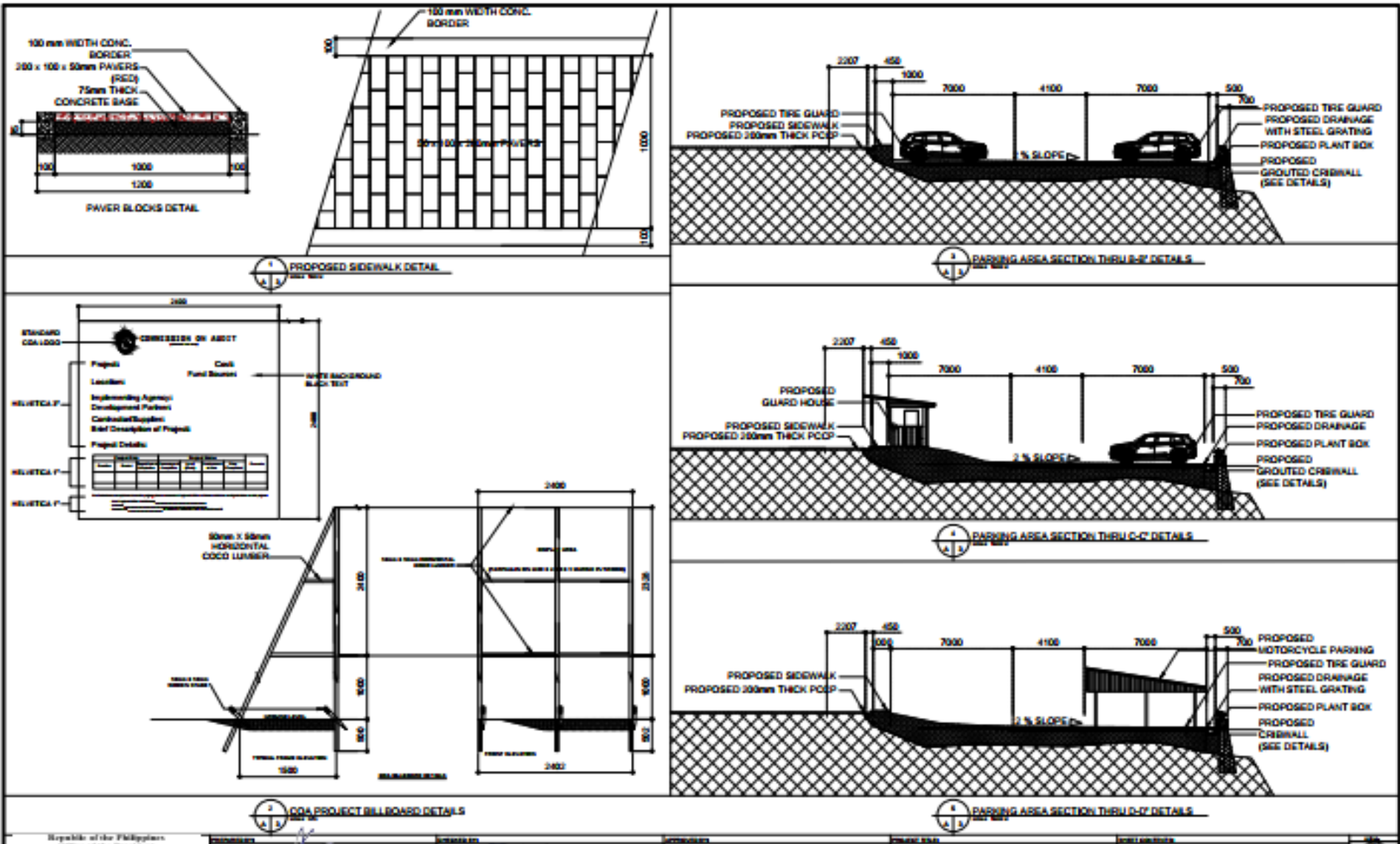
APPROVED BY: *[Signature]*  
CONSTRUCTION AND ASSET MANAGEMENT SUPERVISOR

CONSTRUCTION OF OPEN PARKING AREA AND IMPROVEMENT OF GUARDHOUSE AT THE JHMC OFFICE BUILDING

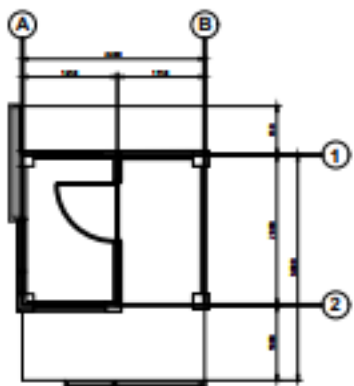
VICINITY MAP, SITE DEVELOPMENT MAP, SUMMARY OF QUANTITIES, INDEX OF DRAWINGS, SPECIFICATIONS



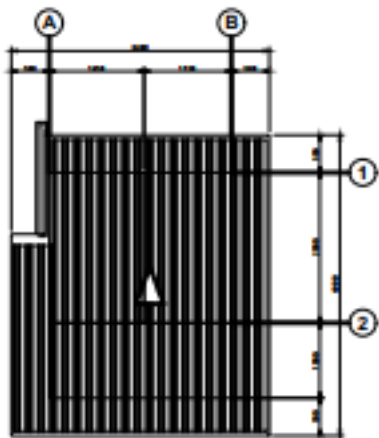








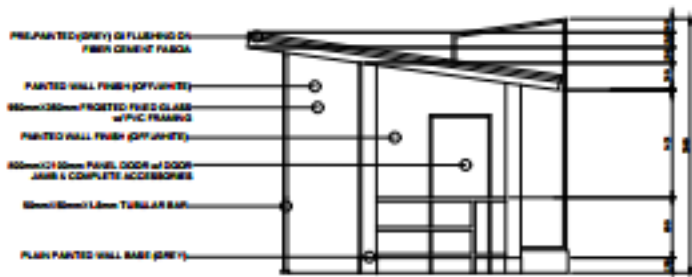
FLOOR PLAN



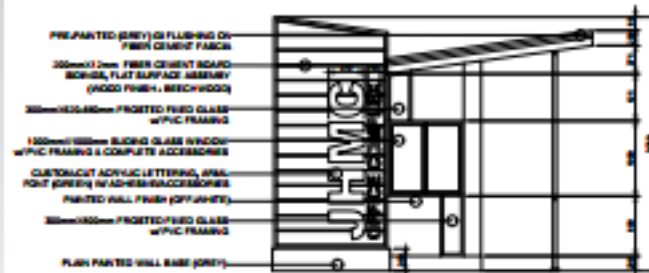
ROOF PLAN



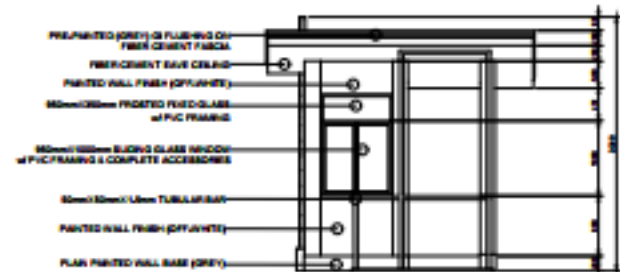
PERSPECTIVE VIEW



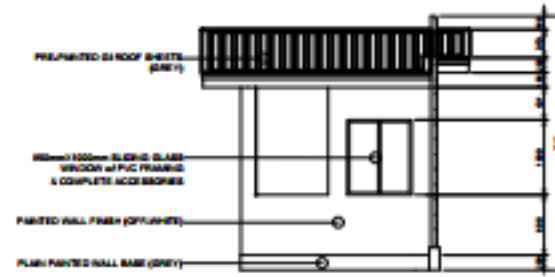
RIGHT SIDE ELEVATION



LEFT SIDE ELEVATION



FRONT ELEVATION



REAR ELEVATION

## *Section VII*

### BILL OF QUANTITIES

ITEM NO.	DESCRIPTION	QTY	UNIT	UNIT COST (PHP)	AMOUNT (PHP)
B.5	PROJECT BILLBOARD/ SIGNBOARDS	1.00	EACH		
B.7(1)	OCCUPATIONAL SAFETY AND HEALTH	4.00	MONTHS		
B.9	MOBILIZATION/ DEMOBILIZATION	1.00	LUMPSUM		
103	STRUCTURE EXCAVATION	69.00	CUBIC METER		
104	EMBANKMENT (FROM BORROW)	800.00	CUBIC METER		
201	AGGREGATE BASE COURSE	13.60	CUBIC METER		
311	PORTLAND CEMENT CONCRETE PAVEMENT (PCCP), 280MM THICK - 14 DAYS	64.00	SQUARE METERS		
401	METAL RAILINGS	37.00	METER		
505	GROUTED RIPRAP (CLASS A)	193.00	CUBIC METERS		
508	HAND LAID ROCK EMBANKMENT	28.00	CU.M.		
600	CURB AND GUTTER (CAST IN PLACE)	70.00	METERS		
801	REMOVAL OF STRUCTURES AND OBSTRUCTIONS	1.00	LUMPSUM		
807	PAVER BLOCKS	184.40	SQUARE METERS		
900(2)	STRUCTURAL CONCRETE - 14 DAYS	158.00	CUBIC METER		
902(1)	REINFORCING STEEL - DEFORMED (GRADE 40)	4,002.00	KILOGRAMS		
1003	CARPENTRY AND JOINERY WORKS	1.00	LUMPSUM		
1010	DOORS AND WINDOWS	5.20	SQUARE METER		
1013	ROOFING (incl. Rain Water Harvesting System)	140.80	SQUARE METER		
1014	PRE - PAINTED METAL SHEETS	56.00	SQUARE METER		
1027	CEMENT PLASTER FINISH	4.00	SQUARE METER		
1032	PAINTING, VARNISHING, AND OTHER RELATED WORKS	461.00	SQUARE METER		
1046	CHB NON-LOAD BEARING (INCLUDING RSB) 100MM THICK	71.00	SQUARE METER		
1047(1)	STRUCTURAL STEEL	1,131.00	KILOGRAMS		
1047(10)	METAL STRUCTURES	1.00	LUMPSUM		
1100(10)	CONDUITS, BOXES & FITTINGS (CONDUIT WORKS/CONDUIT ROUGH-IN)	1.00	LUMPSUM		
1101(33)	WIRES AND WIRING DEVICES	1.00	LUMP SUM		

1102(1)	PANELBOARD WITH MAIN & BRANCH BREAKERS	1.00	LUMPSUM		
1103(1)	LIGHTING FIXTURES AND LAMPS	1.00	LUMP SUM		

**TOTAL**

Name: \_\_\_\_\_

In the capacity of: \_\_\_\_\_

Signed: \_\_\_\_\_

Duly authorized to sign the Bid for and on behalf of: \_\_\_\_\_

Date: \_\_\_\_\_

**GUIDELINES IN PREPARING THE DETAILED UNIT PRICE ANALYSIS (DUPA)**

1. All items of work to be used in preparing the DUPA shall be consistent with the design, plans and specifications prepared by JHMC.
2. For uniformity in the preparation of the Financial Proposal, the DUPA shall be an integral part of the Bidding Documents.
3. All bids shall be composed of the Direct Cost and Indirect Cost.
  - 3.1. **DIRECT COST.**
    - 3.1.1. **MATERIAL COST.** Cost of materials to be used in doing the work item called for, which shall include, among others, the following:
      - 3.1.1.1. Cost at source, including processing, crushing, stockpiling, loading, royalties, local taxes, construction and/or maintenance of haul roads, etc.
      - 3.1.1.2. Expenses for hauling to project site.
      - 3.1.1.3. Handling expenses.
      - 3.1.1.4. Storage expenses.
      - 3.1.1.5. Allowance for waste and/or losses.
    - 3.1.2. **LABOR COST.**
      - 3.1.2.1. Salaries and wages, as authorized by the Department of Labor and Employment.
      - 3.1.2.2. Fringe benefits, such as vacation and sick leaves, benefits under the Workmen's Compensation Act, SSS contributions, allowances, 13th month pay, bonuses, etc.
    - 3.1.3. **EQUIPMENT EXPENSES.**
      - 3.1.3.1. Rental rates of equipment shall be based on the prevailing "Association of Carriers and Equipment Lessors, (ACEL) Inc." approved for use by the DPWH-CAR. Rental rates of equipment not indicated in the ACEL booklet shall be taken from the rental rates used by the proponent. The make, model and capacity of the equipment should be indicated in the detailed unit cost analysis.
      - 3.1.3.2. Mobilization and demobilization shall be treated as a separate pay item. It shall be computed based on the equipment requirements of the project stipulated in the bidder's proposal.
  - 3.2. **INDIRECT COST.**
    - 3.2.1. **Overhead.**
      - 3.2.1.1. Cost to cover power and water consumption and office supplies.
      - 3.2.1.2. Premium on Contractor's All Risk Insurance (CARI).
    - 3.2.2. **Contingencies.** These includes expenses for coordination meetings, ground breaking, inauguration ceremonies and other unforeseen events.
    - 3.2.3. **Miscellaneous Expenses.** Expenses for laboratory tests for quality control.
    - 3.2.4. **Contractor's Profit.**

**Notes:**

1. All sub-items under the General Requirements shall not be subjected to OCM mark-up.
2. The following items under the General Requirements shall not be subjected to Contractor's profit mark-up:
  - a) Mobilization and Demobilization; and
  - b) Permits and clearances

**Project Name:**

Location:

Camp John Hay, Baguio City

## DETAILED UNIT PRICE ANALYSIS

Item No.	Description	Quantity	Unit	Unit Price	Amount
1					
1.1	xxxxxx	xx	xx		
Direct Cost: (a+b+c)					
Indirect Cost:					
Contractor's Profit (Except Items 2.1 and 2.6)					
Withholding					
Taxes					
<b>Sub-Total 1:</b> (Sum of Direct and Indirect Cost)					
Item No.	Item Description				
2	Sub-Item				
2.1	Description	Unit of Measure:			
a.	Labor	No. of Personnel	Daily Rate	No. of Working Days	Amount
	Xxxxxxxx	xx	xxxx.xx	xx	<u>xxxx</u>
				Total Labor Cost:	<u>xxxx</u>
b.	Equipment	No. of Unit/s	Daily Rate	No. of Working Days	Amount
	Xxxxxxxx	xx	xxxx.xx	xx	<u>xxxx</u>
				Total Equipment Rentals:	<u>xxxx</u>
c.	Materials	Quantity	Unit	Unit Price	Amount
	Xxxxxxxx	xx	xxxx.xx	xx	<u>xxxx</u>
				Total Material Cost:	<u>xxxx</u>
Direct Cost: (a+b+c)					
Indirect Cost:					
Overhead					

	Contingencies
	Miscellaneous
	Contractor's Profit
	Withholding Taxes
	<b>Sub-Total 2.1:</b> (Sum of Direct and Indirect Cost)

2.2	Sub-Item Description	Unit of Measure:			
a.	Labor	No. of Personnel	Daily Rate	No. of Working Days	Amount
	xxxxxxx	xx	xxxx.xx	xx	<u>xxxx</u>
				Total Labor Cost:	<u>xxxx</u>
b.	Equipment	No. of Unit/s	Daily Rate	No. of Working Days	Amount
	xxxxxxx	xx	xxxx.xx	xx	<u>xxxx</u>
				Total Equipment Rentals:	<u>xxxx</u>
c.	Materials	Quantity	Unit Price	Unit Price	Amount
	Materials	Quantity	Unit Price	Unit Price	Amount
	xxxxxxx	xx	xxxx.xx	xx	<u>xxxx</u>
				Total Material Cost:	<u>xxxx</u>
		Direct Cost: (a+b+c)			
		Indirect Cost:			
		Overhead			
		Contingencies			
		Miscellaneous			
		Contractor's Profit			
		Withholding Taxes			
		<b>Sub-Total 2.2:</b> (Sum of Direct and Indirect Cost)			
			Item 2. Total Cost:		

Item
2.Unit
Cost:

**Project Name:**  
**Location:** Camp John Hay, Baguio City

DUPA Summary

Item No.	Item Description	Unit	Quantity	Direct Cost				Indirect Cost					Item Cost	Unit Cost	Percent	
				Labor	Equipment	Materials	Total	Overhead	Contingencies	Miscellaneous	Contractor's Profit	Withholding Tax				Total
1	#REF!															
2	General Requirements															
3	xxxxx															
4	xxxxx															
5	xxxxx															
6	xxxxx															
7	xxxxx															
8	xxxxx															
9	xxxxx															
10	xxxxx															
11	xxxxx															
12	xxxxx															

	Amount	Percent
Total Direct Cost:		
a. Labor		
b. Equipment		
c. Materials		
Total Indirect Cost:		
a. Overhead		
b. Contingencies		
c. Miscellaneous		
d. Contractor's Profit		
e. Withholding Taxes		
Total Bid Amount:		



## ***Section IX. Checklist of Technical and Financial Documents***

# Checklist of Technical and Financial Documents

## I. TECHNICAL COMPONENT ENVELOPE

### *Class “A” Documents*

#### Legal Documents

- (a) Valid PhilGEPS Registration Certificate (Platinum Membership) (all pages);  
**or**
- (b) Registration certificate from Securities and Exchange Commission (SEC), Department of Trade and Industry (DTI) for sole proprietorship, or Cooperative Development Authority (CDA) for cooperatives or its equivalent document;  
**and**
- (c) Mayor’s or Business permit issued by the city or municipality where the principal place of business of the prospective bidder is located, or the equivalent document for Exclusive Economic Zones or Areas;  
**and**
- (d) Tax clearance per E.O. No. 398, s. 2005, as finally reviewed and approved by the Bureau of Internal Revenue (BIR).

#### Technical Documents

- (e) Statement of the prospective bidder of all its ongoing government and private contracts, including contracts awarded but not yet started, if any, whether similar or not similar in nature and complexity to the contract to be bid; **and**
- (f) Statement of the bidder’s Single Largest Completed Contract (SLCC) similar to the contract to be bid, except under conditions provided under the rules;  
**and**
- (g) Philippine Contractors Accreditation Board (PCAB) License;  
**or**  
Special PCAB License in case of Joint Ventures;  
**and** registration for the type and cost of the contract to be bid; **and**
- (h) Original copy of Bid Security. If in the form of a Surety Bond, submit also a certification issued by the Insurance Commission;  
**or**  
Original copy of Notarized Bid Securing Declaration; **and**
- (i) Project Requirements, which shall include the following:
  - a. Organizational chart for the contract to be bid;
  - b. List of contractor’s key personnel (*e.g.*, Project Manager, Project Engineers, Materials Engineers, and Foremen), to be assigned to the contract to be bid, with their complete qualification and experience data;
  - c. List of contractor’s major equipment units, which are owned, leased, and/or under purchase agreements, supported by proof of ownership or certification of availability of equipment from the equipment lessor/vendor for the duration of the project, as the case may be; **and**
- (j) Original duly signed Omnibus Sworn Statement (OSS);

**and** if applicable, Original Notarized Secretary's Certificate in case of a corporation, partnership, or cooperative; or Original Special Power of Attorney of all members of the joint venture giving full power and authority to its officer to sign the OSS and do acts to represent the Bidder.

Financial Documents

- (k) The prospective bidder's audited financial statements, showing, among others, the prospective bidder's total and current assets and liabilities, stamped "received" by the BIR or its duly accredited and authorized institutions, for the preceding calendar year which should not be earlier than two (2) years from the date of bid submission; **and**
- (l) The prospective bidder's computation of Net Financial Contracting Capacity (NFCC).

**Class "B" Documents**

- (m) If applicable, duly signed joint venture agreement (JVA) in accordance with RA No. 4566 and its IRR in case the joint venture is already in existence;  
**or**  
duly notarized statements from all the potential joint venture partners stating that they will enter into and abide by the provisions of the JVA in the instance that the bid is successful.

**II. FINANCIAL COMPONENT ENVELOPE**

- (n) Original of duly signed and accomplished Financial Bid Form; **and**

Other documentary requirements under RA No. 9184

- (o) Original of duly signed Bid Prices in the Bill of Quantities; **and**
- (p) Duly accomplished Detailed Estimates Form, including a summary sheet indicating the unit prices of construction materials, labor rates, and equipment rentals used in coming up with the Bid; **and**
- (q) Cash Flow by Quarter.

