

Republic of the Philippines  
Office of the President

**JHMC**

JOHN HAY MANAGEMENT CORPORATION

## REHABILITATION OF COTTAGE 629

DRAFTED BY:

  
ENGR. LARA MELISSA C. ANTONIO  
CIVIL/STRUCTURAL ENGINEER

CHECKED BY:

ARCH. LUZVIMINDA M. NIGOS-PANGANIBAN  
PROJECT MANAGER

APPROVED BY:

ENGR. BOBBY V. AKIA  
EAMD MANAGER





EXISTING STRUCTURE

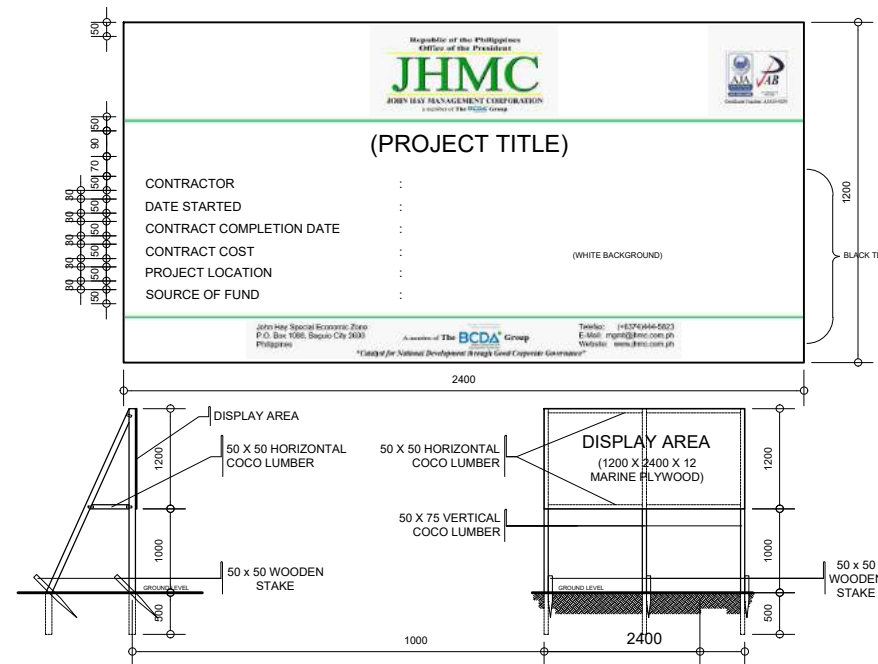
001 EXTERIOR PERSPECTIVE VIEW  
SCALE: NTS



002 VICINITY MAP  
SCALE: NTS

ITEM NO.	DESCRIPTION	QTY	UNIT
B.5	PROJECT BILLBOARD/SIGNBOARD	2.00	Each
B.7	OCCUPATIONAL SAFETY AND HEALTH PROGRAM	2.17	Month
B.9	MOBILIZATION/DEMOBILIZATION	1.00	I.S.
101	REMOVAL OF STRUCTURES AND OBSTRUCTIONS	1.00	I.S.
1002	PLUMBING WORKS	1.00	I.S.
1003(1)	CARPENTRY AND JOINERY WORKS (CEILING)	1.00	I.S.
1003(11)	CARPENTRY AND JOINERY WORKS (FASCIA BOARD)	1.00	I.S.
1004	HARDWARE (FINISHING)	1.00	I.S.
1007	ALUMINUM FRAMED DOORS	5.04	sq.m.
1008	ALUMINUM GLASS WINDOWS (Awning type)	18.00	sq.m.
1014	PRE-PAINTED METAL SHEETS	159.06	sq.m.
1017	ROOF DRAINS WITH STRAINERS	11.00	set
1018	CERAMIC/GRANITE TILES	37.60	sq.m.
1032	PAINING, VARNISHING AND OTHER RELATED WORKS	519.74	sq.m.
1103	LIGHTING FIXTURES AND LAMPS	1.00	I.S.

003 SUMMARY OF QUANTITIES  
SCALE: NTS



004 BILLBOARD FRAMING DETAILS  
SCALE: NTS



Republic of the Philippines  
Office of the President

**JHMC**  
JOHN HAY MANAGEMENT CORPORATION

SHEET CONTENT:  
EXTERIOR PERSPECTIVE VIEW  
VICINITY MAP  
SUMMARY OF QUANTITIES  
BILLBOARD FRAMING DETAILS

PROJECT TITLE  
**REHABILITATION OF COTTAGE 629**

LOCATION OF PROJECT:  
**CAMP JOHN HAY SPECIAL ECONOMIC ZONE, BAGUIO CITY**

APPROVED BY:  
**ENGR. BOBBY V. AKIA**

CHECKED BY:  
**ARCH. LUZVIMINDA M. NIGOS-PANGANIBAN**

DRAFTED BY:  
**ENGR. LARA MELISSA C. ANTONIO**

D.A.T.E.: **20 AUGUST 2021** PAGE: **1/3**





- REMOVAL AND REPLACEMENT OF EXISTING GI ROOF SHEETS, GUTTER, INSTALLATION OF ROOF DRAINS W/ STRAINER



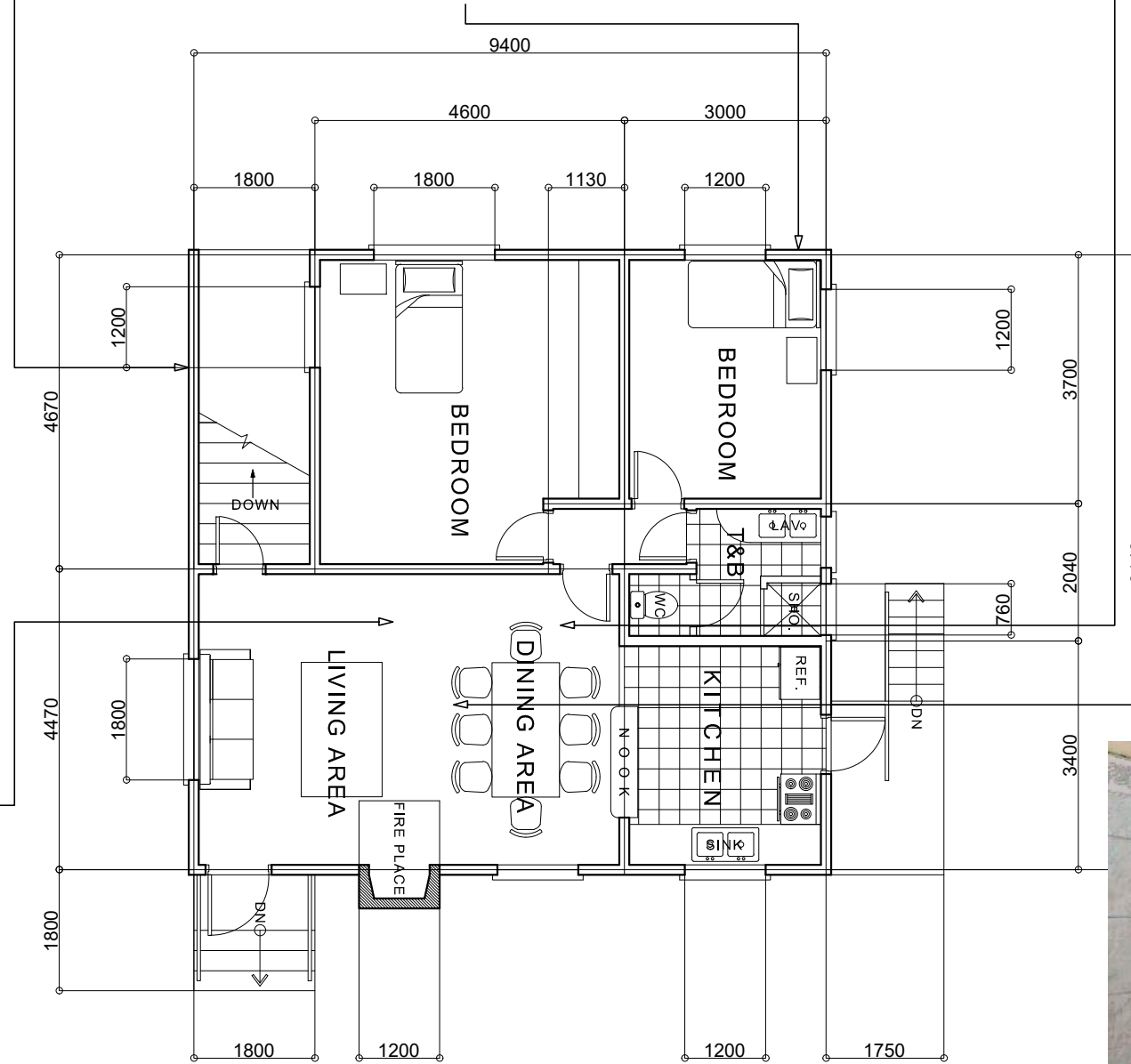
- REPAINTING OF EXTERIOR WALLS  
 - REPLACEMENT OF WOODEN WINDOWS TO ALUMINUM CASEMENT  
 - REMOVAL AND REPLACEMENT OF WINDOW EAVES



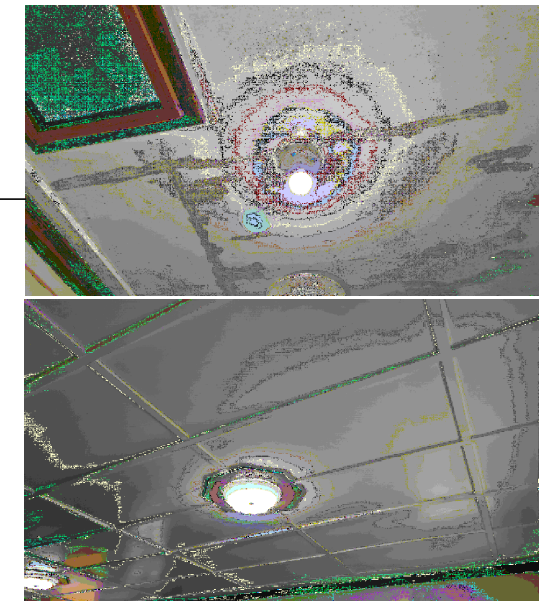
- REPAINTING OF INTERIOR WALLS



SANDING OF EXISTING WOODEN FLOORING (LIVING AREA, BEDROOMS, STAIRS)



005 GROUND FLOOR LEVEL PLAN  
 SCALE: 1:100 m



- REPAINTING OF CEILING, REPLACEMENT AND REPAINTING OF DAMAGED CORNICE  
 - REPLACEMENT OF BUSTED LIGHTING FIXTURES



- REPAIR/REPLACEMENT OF PLUMBING FIXTURES AT COMFORT ROOMS  
 - REPLACEMENT OF LEAKING/DAMAGED PLUMBING FIXTURES

Republic of the Philippines  
 Office of the President

**JHMC**  
 JOHN HAY MANAGEMENT CORPORATION

SHEET CONTENT:  
 GROUND FLOOR LEVEL PLAN

PROJECT TITLE  
**REHABILITATION OF COTTAGE 629**

LOCATION OF PROJECT:  
 CAMP JOHN HAY SPECIAL ECONOMIC ZONE, BAGUIO CIY

APPROVED BY:  
 ENGR. BOBBY V. AKIA

CHECKED BY:  
 ARCH. LUZVIMINDA M. NIGOS-PANGANIBAN

DRAFTED BY:  
 ENGR. LARA MELISSA C. ANTONIO

DATE: 20 AUGUST 2021

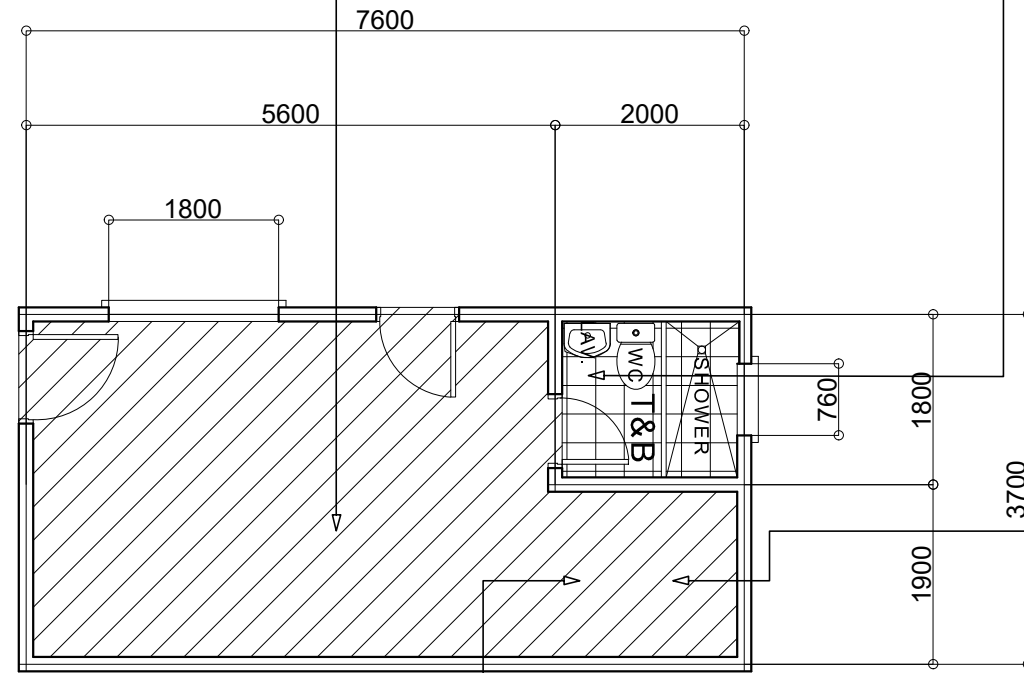
PAGE: 2/3





- REPAINTING OF CEILING, INSTALLATION AND REPAINTING OF CORNICE AND BASEBOARD

- REMOVAL OF CARPET AND REPLACEMENT OF CERAMIC TILES



006 BASEMENT LEVEL FLOOR PLAN  
SCALE 1:80 m



- EMBEDMENT OF EXPOSED PIPING SYSTEM  
- INSTALLATION OF CERAMIC TILES



- REMOVAL AND REPLACEMENT OF BUILT-IN CABINET

Republic of the Philippines Office of the President <b>JHMC</b> JOHN HAY MANAGEMENT CORPORATION	
SHEET CONTENT:	
BASEMENT LEVEL FLOOR PLAN	
PROJECT TITLE	
REHABILITATION OF COTTAGE 629	
LOCATION OF PROJECT:	
CAMP JOHN HAY SPECIAL ECONOMIC ZONE, BAGUIO CIY	
APPROVED BY:	
ENGR. BOBBY V. AKIA	
CHECKED BY:	
ARCH. LUZVIMINDA M. NIGOS-PANGANIBAN	
DRAFTED BY:	A3
ENGR. LARA MELISSA C. ANTONIO	
DATE: 20 AUGUST 2021	PAGE: 3/3