



**LANDSCAPING, RESTORATION OF ARCHES AND CANOPIES,  
AND IMPROVEMENT OF HISTORY TRAIL SIGNAGES AND  
PATHWAY**

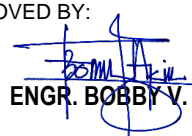
DRAFTED BY:

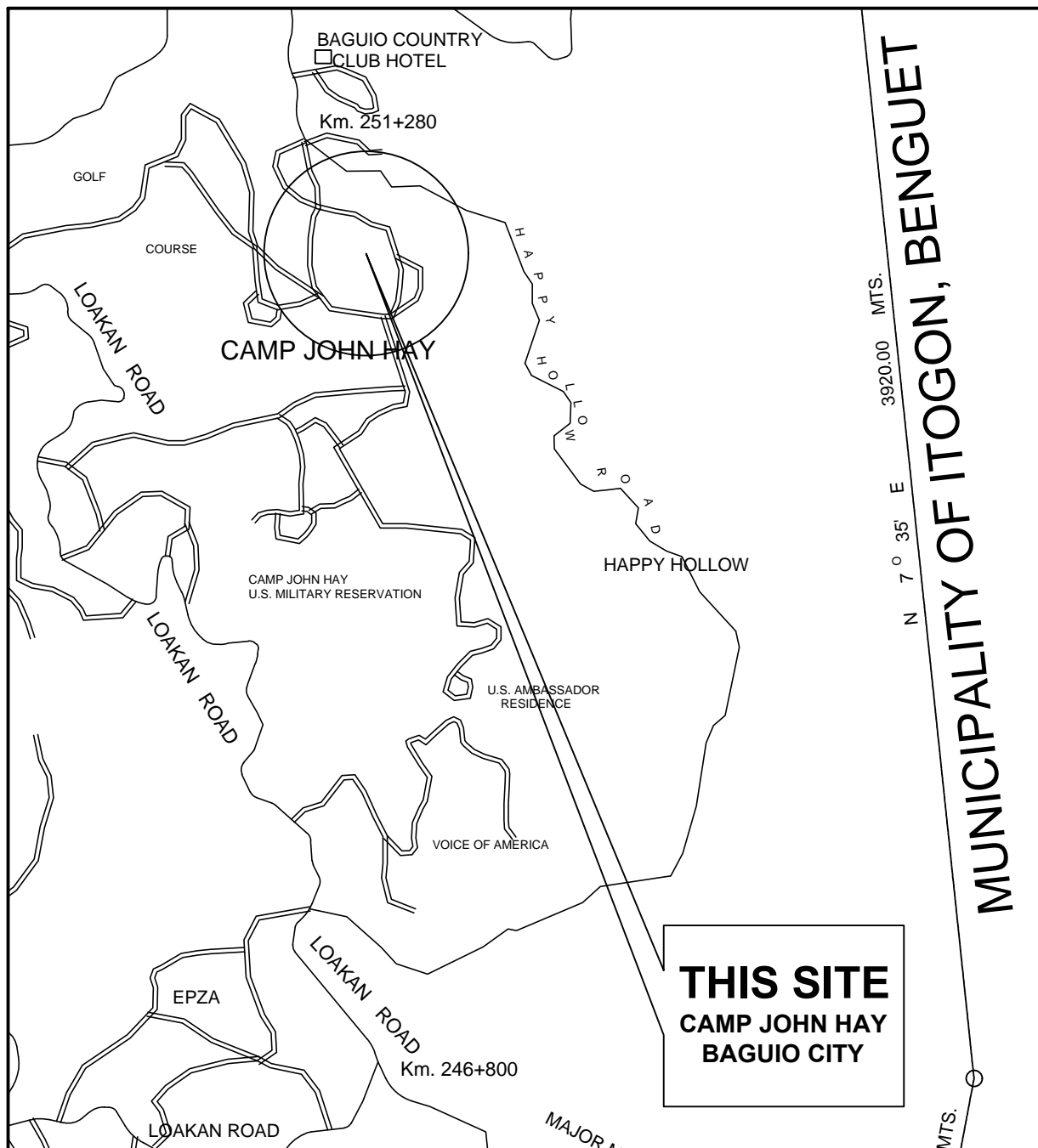
  
ENGR. ADRIYEL A. UDA

CHECKED BY:

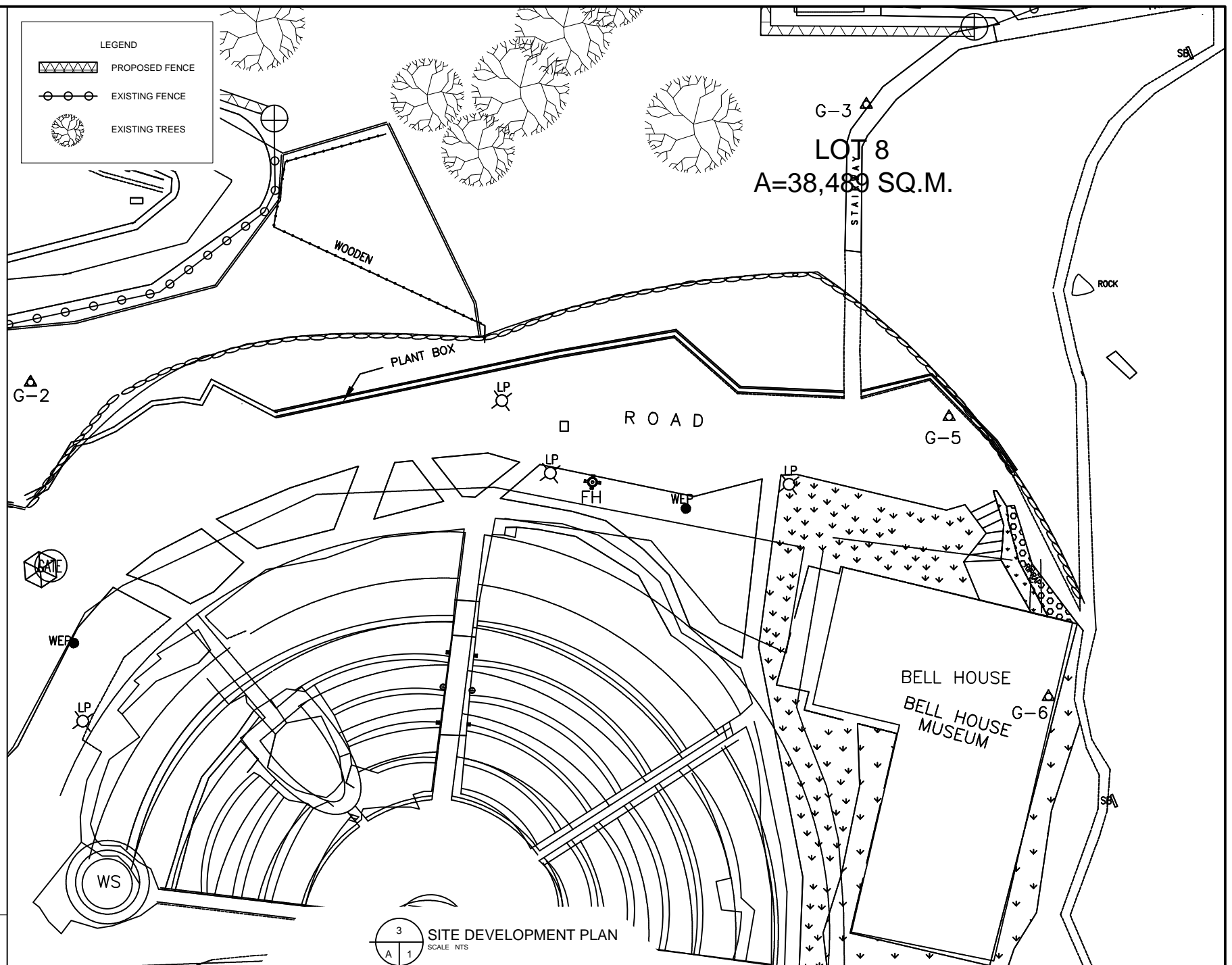
  
ARCH. LUZVIMINDA M. NIGOS-PANGANIBAN

APPROVED BY:

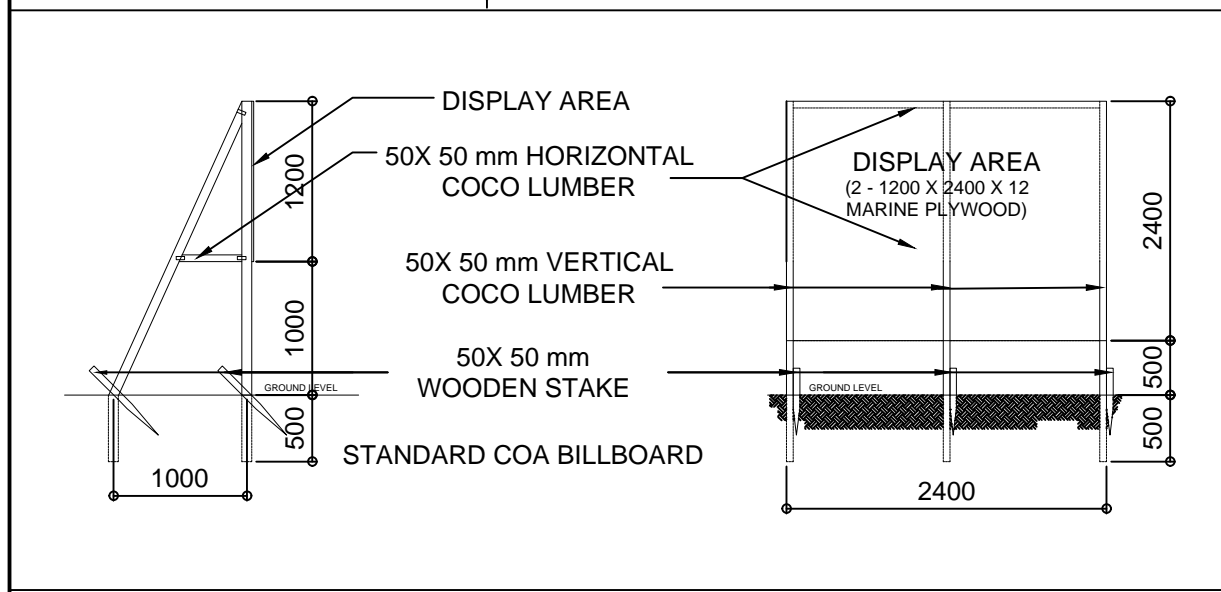
  
ENGR. BOBBY V. AKIA



1 VICINITY MAP  
SCALE: NTS



3 SITE DEVELOPMENT PLAN  
SCALE: NTS



2 PROJECT BILLBOARD DETAILS  
SCALE: NTS

ITEM NO.	DESCRIPTION	QTY	UNIT	REMARKS
B.5	PROJECT BILLBOARD/ SIGNBOARD	1.00	Each	Standard COA Billboard
B.7(1)	OCCUPATIONAL SAFETY AND HEALTH	2.00	Months	Includes signs and Barricades
B.9	MOBILIZATION/ DEMOBILIZATION	1.00	Lumpsum	
100(2)	CLEARING AND GRUBBING	1.00	Lumpsum	
102(2)	SURPLUS COMMON EXCAVATION	25.00	Cubic Meter	
401(1)	METAL RAILINGS	109.00	Meters	2" Dia. GI Pipe, Sch. 40
403 (5)	STRUCTURAL STEEL	1.00	Lumpsum	Main/ Pathway Arches
411(2)	PAINT	1.00	Lumpsum	
807(2)	SITE DEVELOPMENT (SOFT SCAPE)	1.00	Square Meter	Soft Scape
807(9)	PAVER BLOCKS	75.00	Square Meter	50 x 100 x 200 mm, Red Finish

4 SUMMARY OF QUANTITIES  
SCALE: NTS

Republic of the Philippines  
Office of the President

**JHMC**  
JOHN HAY MANAGEMENT CORPORATION

SHEET CONTENT:  
VICINITY MAP  
SUMMARY OF QUANTITIES  
SITE DEVELOPMENT PLAN  
PROJECT BILLBOARD DETAILS

**LANDSCAPING, RESTORATION OF ARCHES AND CANOPIES, AND IMPROVEMENT OF HISTORY TRAIL SIGNAGES AND PATHWAY**

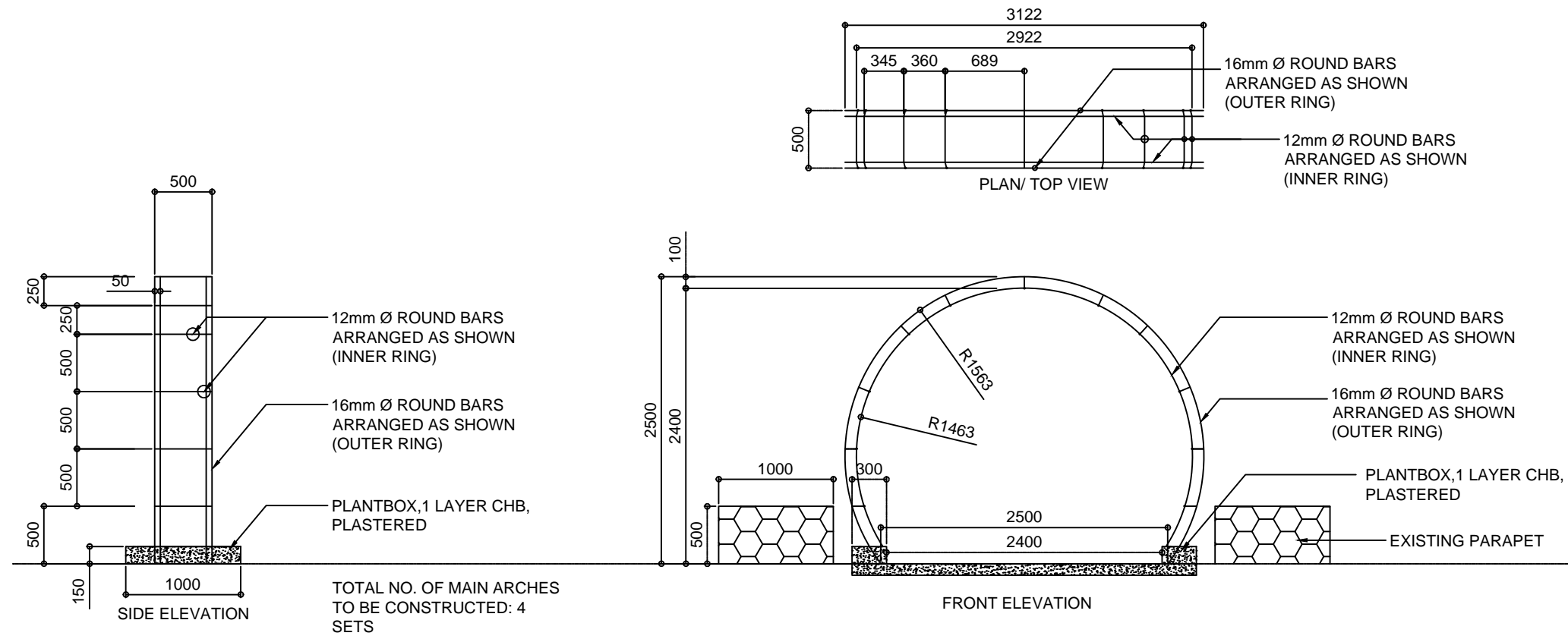
LOCATION OF PROJECT:  
CAMP JOHN HAY, BAGUIO CITY

APPROVED BY:  
ENGR. BOBBY V. AKIA

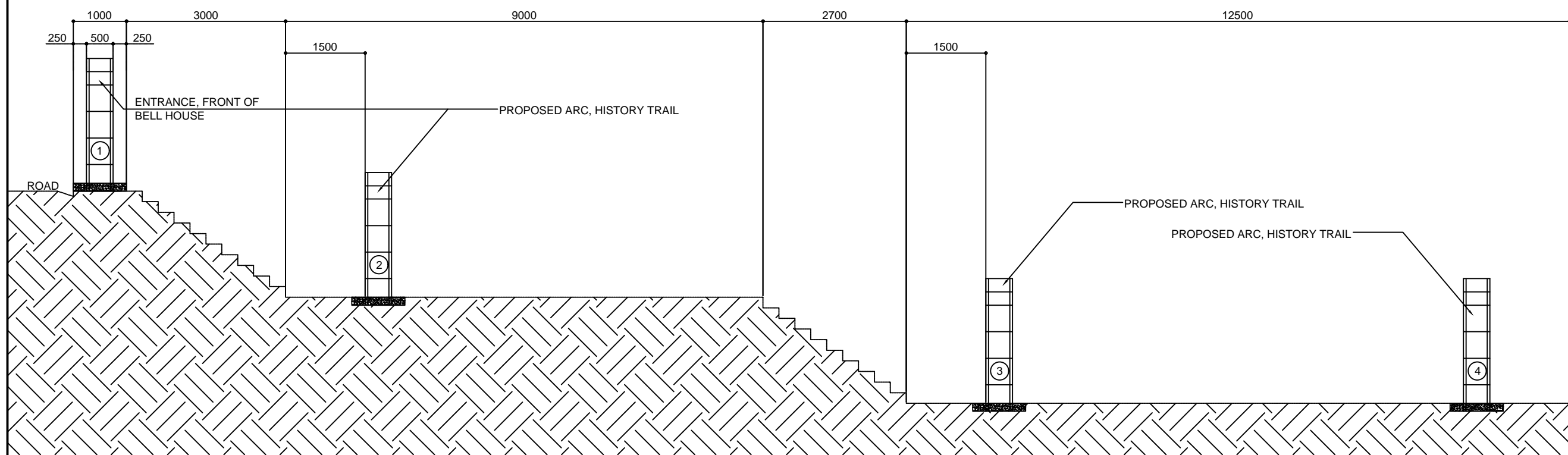
CHECKED BY:  
ARCH. LUZVIMINDA M. NIGOS-PANGANIBAN

DRAFTED BY:  
ENGR. ADRIEL A. UDA

DATE: 10 NOVEMBER 2021



1 PROPOSED MAIN ARCH DETAIL  
 SCALE: 1:50 M



2 LOCATION OF PROPOSED MAIN ARCHES  
 SCALE: NTS

Republic of the Philippines  
 Office of the President

**JHMC**  
 JOHN HAY MANAGEMENT CORPORATION

SHEET CONTENT:  
 PROPOSED MAIN ARCH DETAIL  
 LOCATION OF PROPOSED MAIN ARCHES

LANDSCAPING, RESTORATION OF ARCHES AND CANOPIES, AND IMPROVEMENT OF HISTORY TRAIL SIGNAGES AND PATHWAY

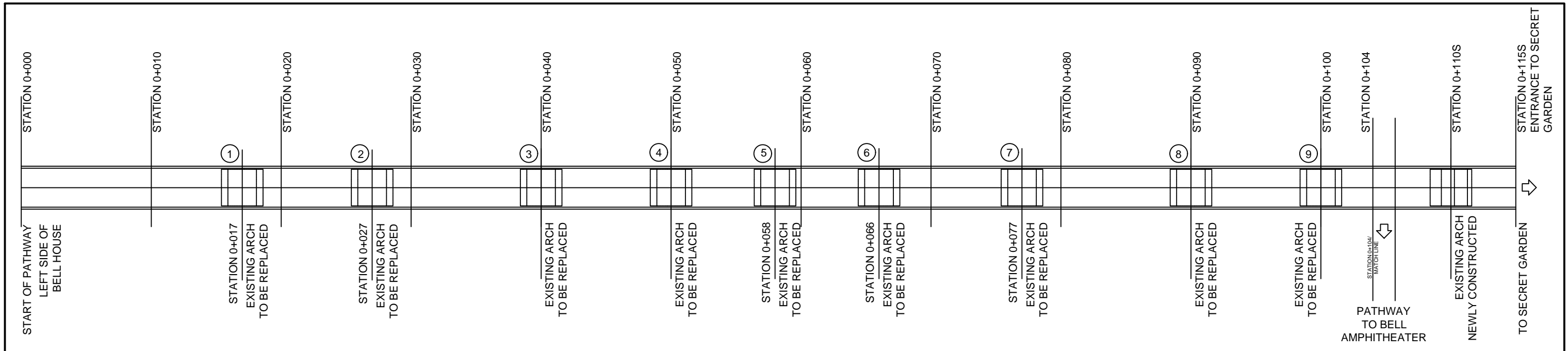
LOCATION OF PROJECT:  
 CAMP JOHN HAY, BAGUIO CITY

APPROVED BY:  
 ENGR. BOBBY V. AKIA

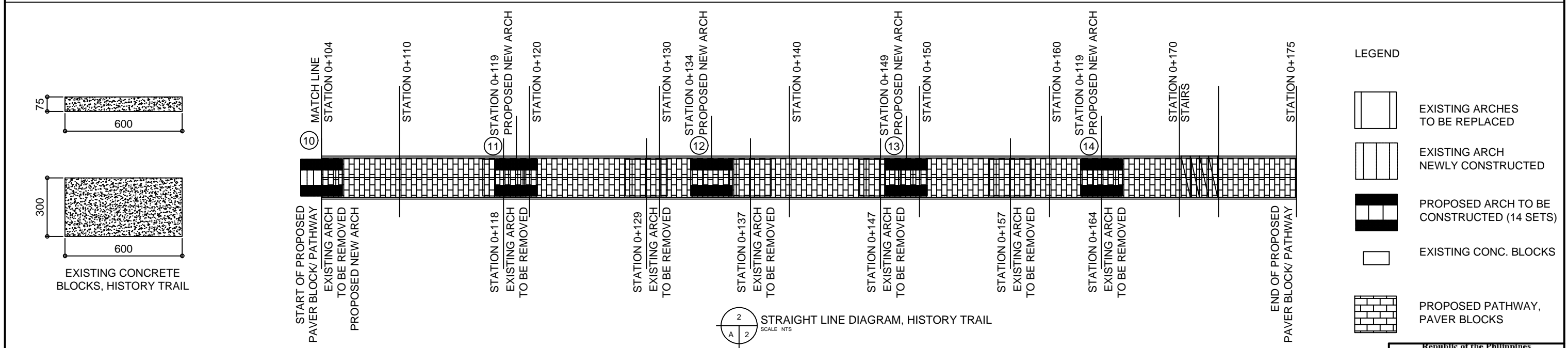
CHECKED BY:  
 ARCH. LUZVIM V. M. NIGOS-PANGANIBAN

DRAFTED BY:  
 ENGR. ADRIYEL A. ODA

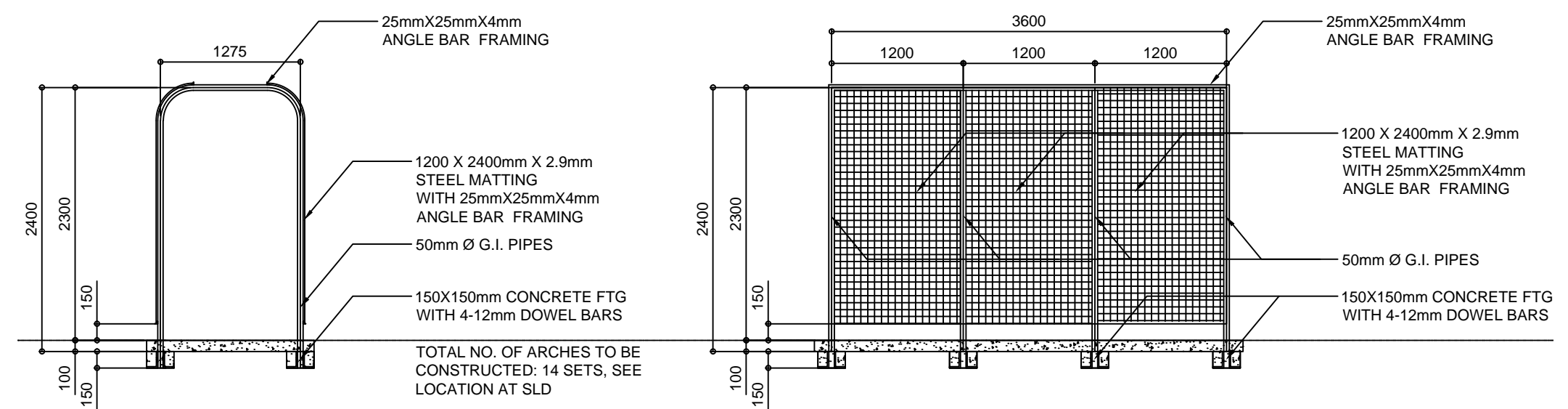
D.A.T.E.: 10 NOVEMBER 2021 PAGE:



1 STRAIGHT LINE DIAGRAM, HISTORY TRAIL  
SCALE: NTS



2 STRAIGHT LINE DIAGRAM, HISTORY TRAIL  
SCALE: NTS



3 PROPOSED ARCHES ON PATHWAY DETAIL  
SCALE: 1:20

Republic of the Philippines  
Office of the President

**JHMC**  
JOHN HAY MANAGEMENT CORPORATION

SHEET CONTENT:  
STRAIGHT LINE DIAGRAM, HISTORY TRAIL  
STRAIGHT LINE DIAGRAM, HISTORY TRAIL  
PROPOSED ARCHES ON PATHWAY DETAIL

LANDSCAPING, RESTORATION OF ARCHES AND CANOPIES, AND IMPROVEMENT OF HISTORY TRAIL SIGNAGES AND PATHWAY

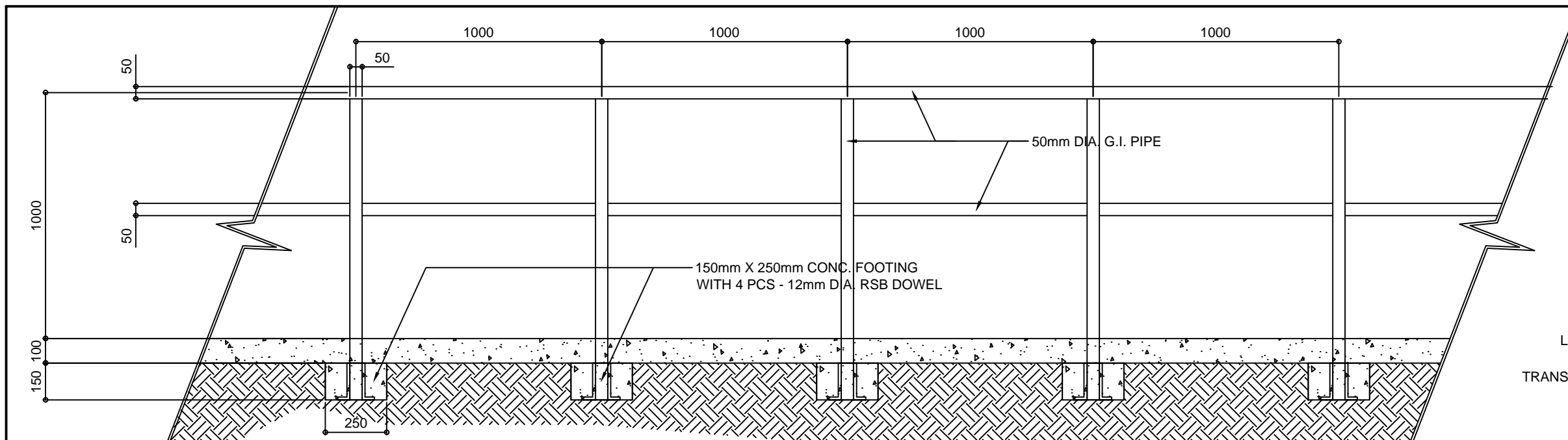
LOCATION OF PROJECT:  
CAMP JOHN HAY, BAGUIO CITY

APPROVED BY:  
ENGR. BOBBY V. AKIA

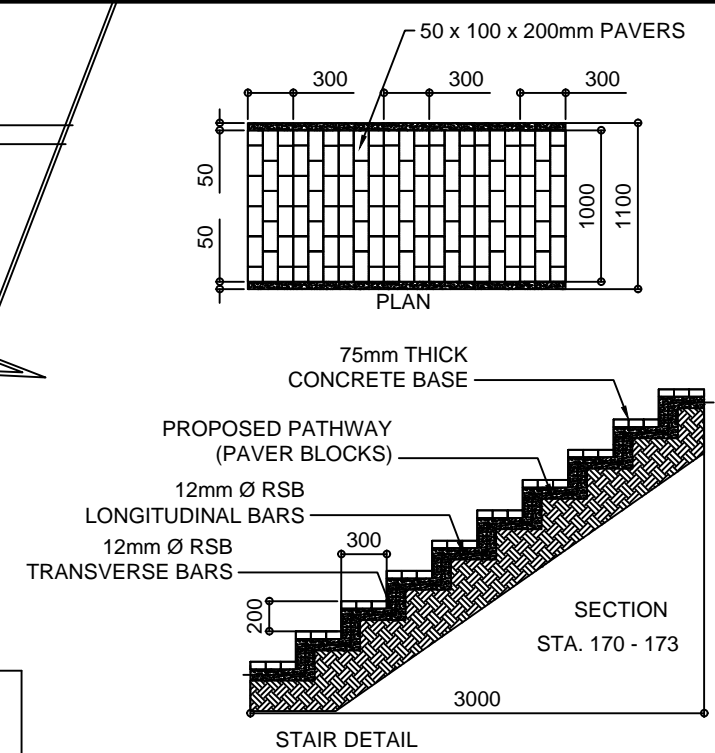
CHECKED BY:  
ARCH. LUZVIMBA M. NIGOS-PANGANIBAN

DRAFTED BY:  
ENGR. ARNOLD A. UJA

DATE: 10 NOVEMBER 2021 PAGE:



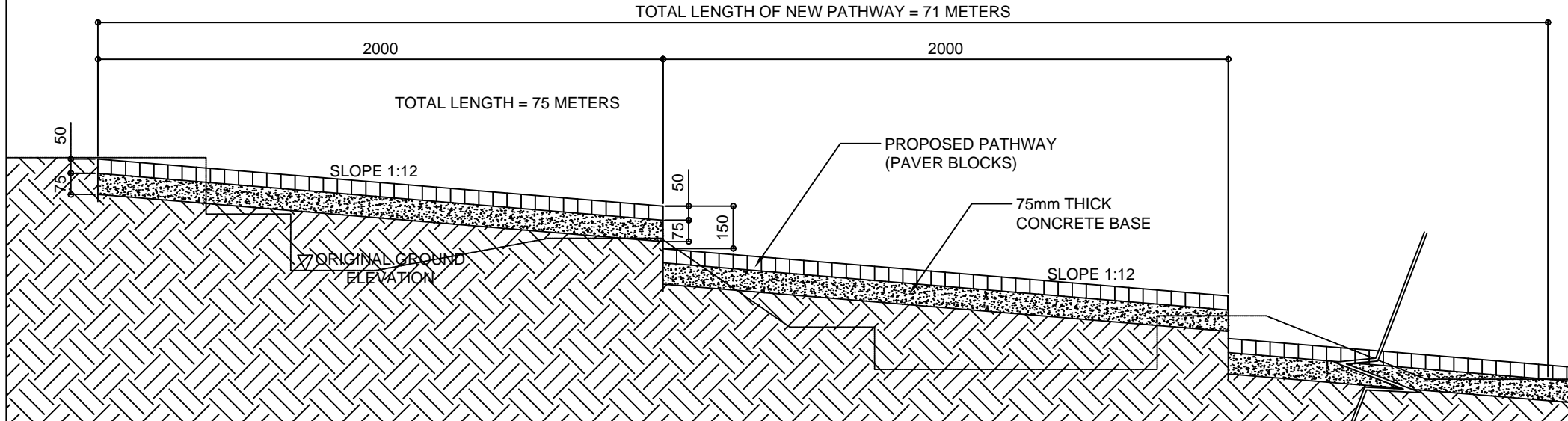
1 PROPOSED RAILINGS DETAIL  
SCALE 1:20 M



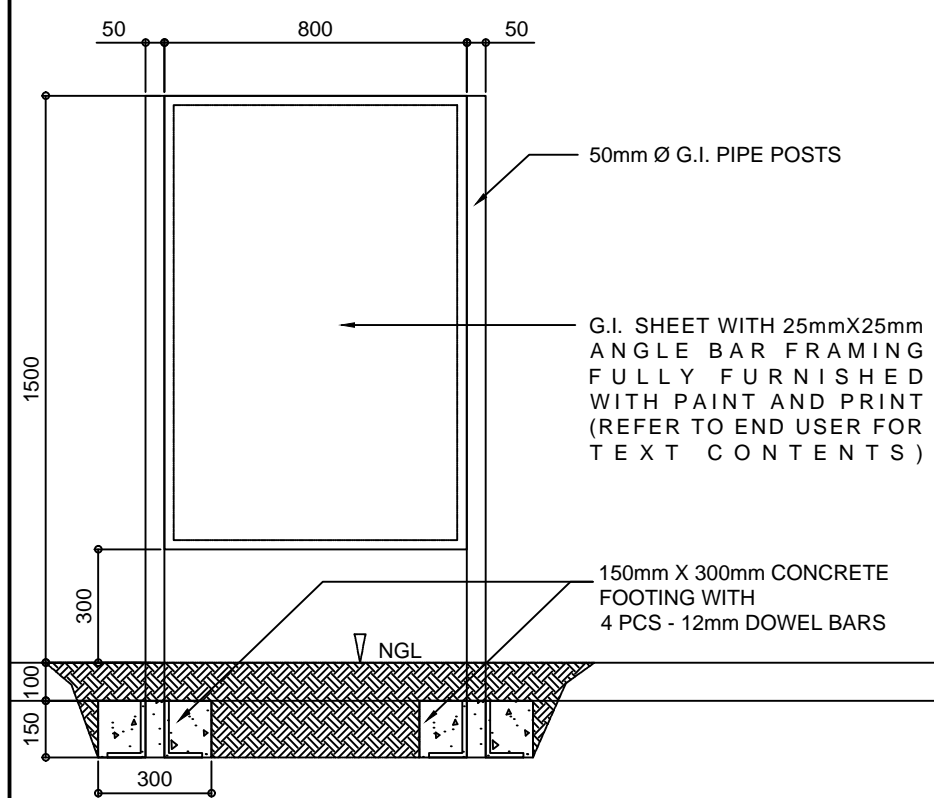
STAIR DETAIL  
SECTION STA. 170 - 173

LOCATION OF RAILINGS ON PATHWAY

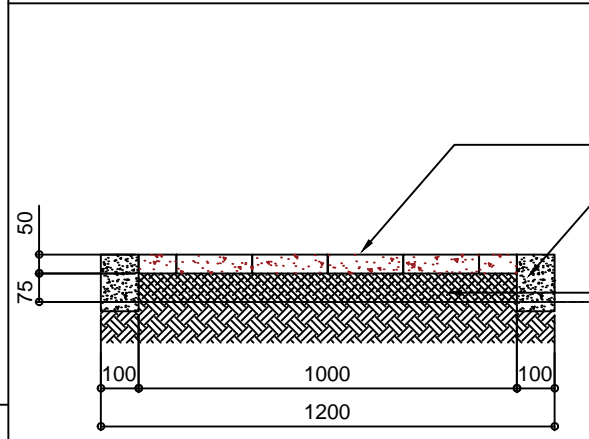
DESCRIPTION	LENGTH (m)	LOCATION	REMARKS
2" Ø METAL RAILING	3.20	HISTORY TRAIL STAIRS, 2 SIDES	
2" Ø METAL RAILING	3.00	HISTORY TRAIL STAIRS, 2 SIDES	
2" Ø METAL RAILING	21.00	HISTORY TRAIL STAIRS, 2 SIDES	
2" Ø METAL RAILING	3.00	HISTORY TRAIL STAIRS, 2 SIDES	
2" Ø METAL RAILING	5.00	HISTORY TRAIL LEFT SIDE	



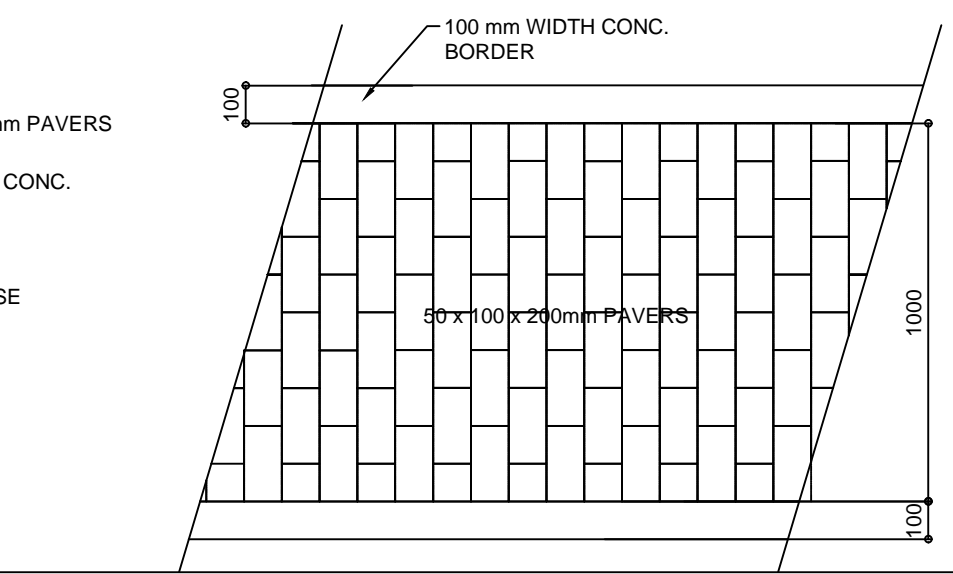
2 TYPICAL PATHWAY SECTION DETAIL  
SCALE 1:20 M



3 PROPOSED SIGNAGE DETAIL  
SCALE 1:20 M



PAVER BLOCKS DETAIL



4 PROPOSED PATHWAY DETAIL  
SCALE 1:20 M

Republic of the Philippines  
Office of the President

**JHMC**  
JOHN HAY MANAGEMENT CORPORATION

SHEET CONTENT:  
 PROPOSED RAILINGS DETAIL  
 PROPOSED PATHWAY DETAIL  
 PAVER BLOCKS DETAIL  
 PARK SIGNAGES/ INFORMATIVE SIGNS DETAIL

LANDSCAPING, RESTORATION OF ARCHES AND CANOPIES, AND IMPROVEMENT OF HISTORY TRAIL SIGNAGES AND PATHWAY

LOCATION OF PROJECT:  
 CAMP JOHN HAY, BAGUIO CITY

APPROVED BY:  
 ENGR. BOBBY V. AKIA

CHECKED BY:  
 ARCH. LUZVINA M. NIGOS-PANGANIBAN

DRAFTED BY:  
 ENGR. ADRIYEL A. UDA

DATE: 10 NOVEMBER 2021 PAGE: