

BID BULLETIN NO. 01

Renovation of two (2) Damaged Stations - Kadaclan Control Point and Ranger Station, to Include Establishment of Restrooms

The John Hay Management Corporation provides the following reiterations, clarifications and/or supplemental information to the Bidding Documents for the above-mentioned project, as discussed during the Pre-bid Conference conducted last 11 November 2020:

BID DATA SHEET		
Reference	Original	Revised
Section VII Drawings	No Layout Drawings attached	Layout drawings attached : a. Relocation and Construction of Kadaclan Ranger Station : Annex A b. Renovation of Kadaclan Control Point : Annex B
Section VIII Bill of Quantities	No Bill of Quantities attached	Bill of Quantities for: c. Relocation and Construction of Kadaclan Ranger Station : Annex C d. Renovation of Kadaclan Control Point : Annex D

For your information. Thank You.

(sgd.) JANE THERESA G. TABALINGCOS
BAC Chairperson

RELOCATION & CONSTRUCTION OF NEW RANGER STATION

REVISION "2"



JOHN HAY MANAGEMENT CORPORATION

a member of THE BCDA GROUP

JOHN HAY SPECIAL ECONOMIC ZONE, BAGUIO CITY

ABBREVIATION:
MS-HPRT ON SITE
AS-BUILT ON SITE

REMARKS:
ARCHITECTURAL WORKS
SAVAGE MATERIALS FROM DEMOLISHED
COTTAGE 624 WILL BE USED FOR THIS
PROJECT
-2 SETS OF -1,20mm X 1,50mm
WINDOWS
-2 SETS OF -600mm X 1,50mm
WINDOWS
-1 SET OF DOOR-800mm X 2100mm

Republic of the Philippines
JHMC
JOHN HAY MANAGEMENT CORPORATION
1000 North Avenue, 3rd Floor, Alabang, Muntinlupa City, Philippines
www.jhmc.com.ph

PROJECT TITLE
**RELOCATION & CONSTRUCTION
OF NEW RANGER STATION**

LOCATION OF PROJECT
YELLOW TRAIL - IREZ
(BELOW KIA LOGHOUSE NO. 9,
INTERSECTION going to KAMALUAN VILLAGE)

NOTED BY
ENGR. BOBBY V. ANA

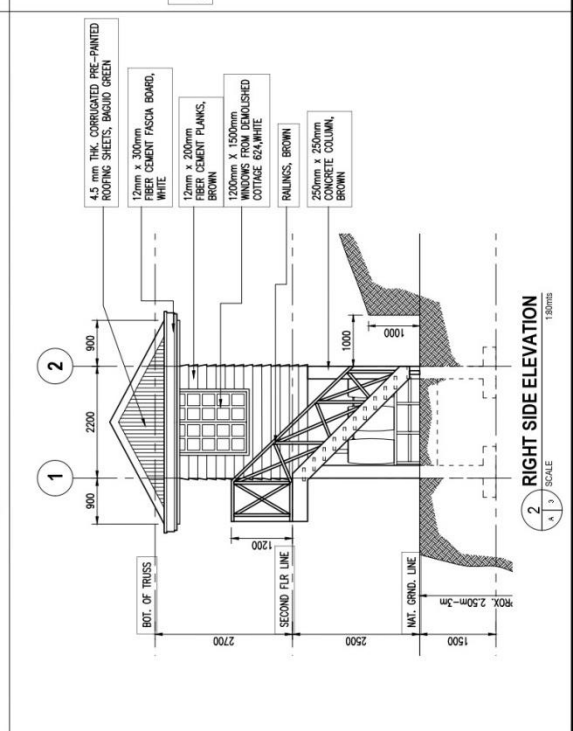
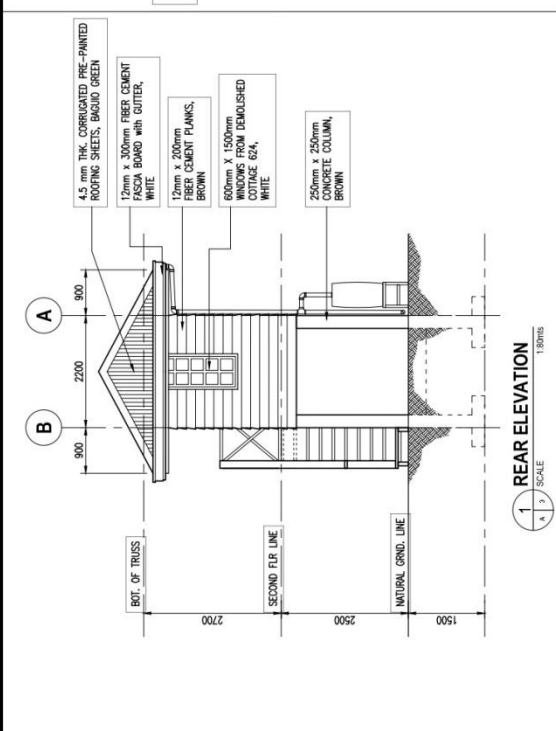
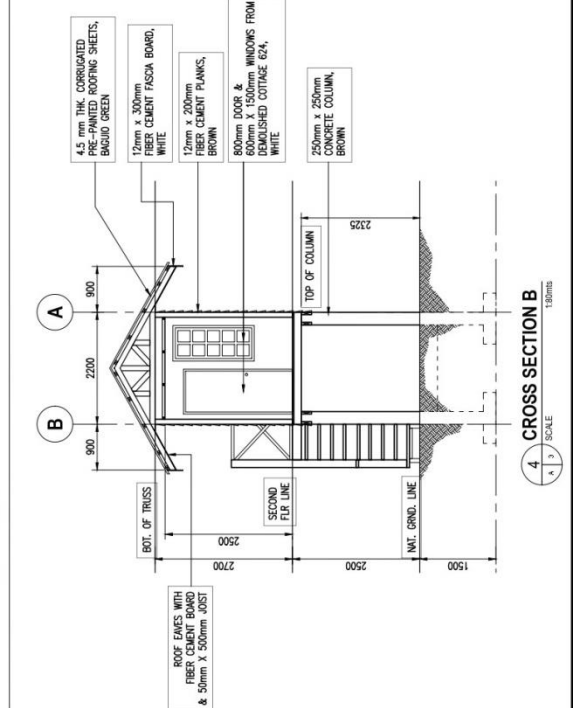
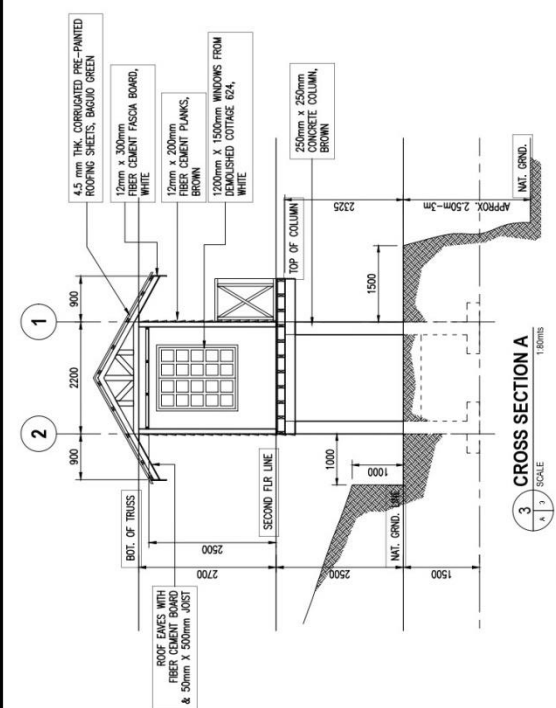
CHECKED APPROVED BY
ARCH. LUCYBANDA M. NIOS-PANGANIBAN

DRAWN BY
ARCH. MARLOU C. DULAYAN

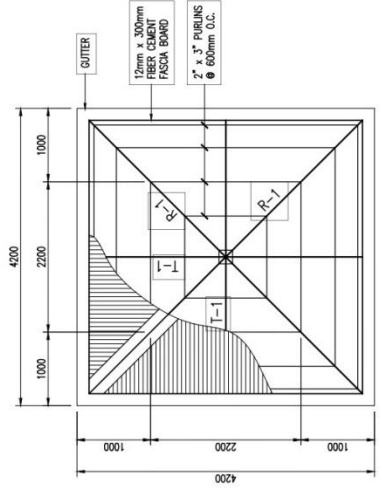
DATE
4 AUGUST 2020

SCALE
A3

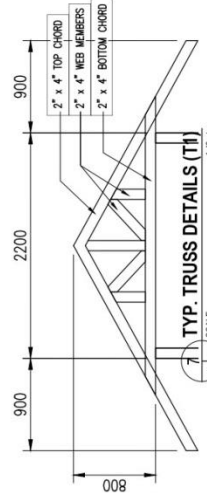
PAGE
38



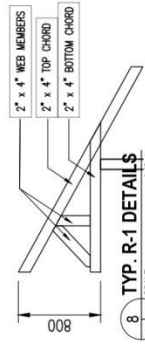
ABBREVIATION:
 VIS-VISIT ON SITE
 ACS-ADJUST ON SITE



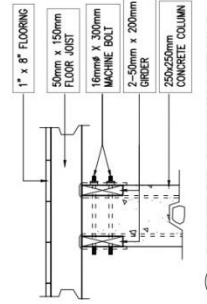
6 ROOF FRAMING PLAN
 1:5000 SCALE



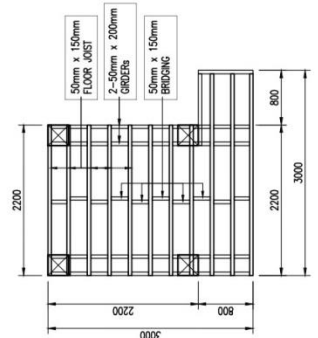
7 TYP. TRUSS DETAILS (T1)
 1:4000 SCALE



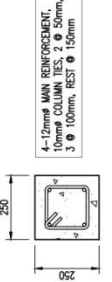
8 TYP. R-1 DETAILS
 1:3000 SCALE



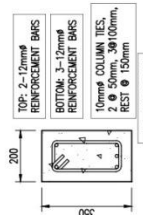
9 GIRDER TO COLUMN DETAILS
 1:2000 SCALE



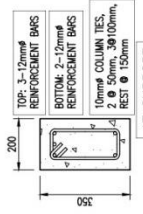
2 SECOND FLOOR FRAMING PLAN
 1:5000 SCALE



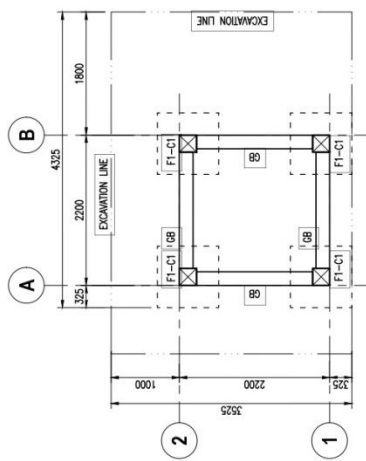
4 COLUMN DETAIL (C1)
 1:1000 SCALE



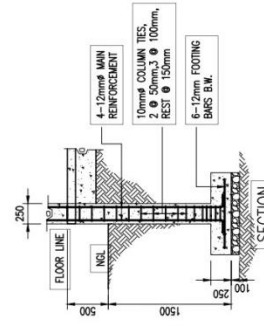
5 GRADE BEAM DETAIL (GB)
 1:1000 SCALE



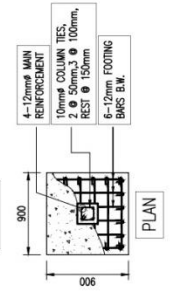
6 GRADE BEAM DETAIL (GB)
 1:1000 SCALE



1 FOUNDATION PLAN
 1:5000 SCALE



3 FOOTING-COLUMN (F-C1) DETAILS
 1:5000 SCALE



4 FOOTING-COLUMN (F-C1) DETAILS
 1:5000 SCALE

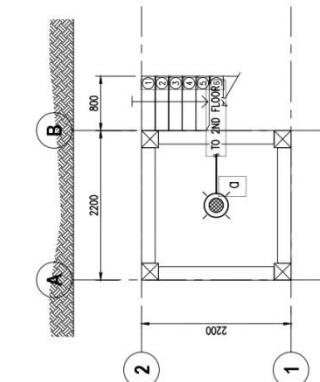
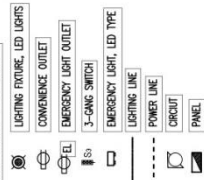
JHMC
 JOHNS HAY MANAGEMENT CORPORATION
 A member of The HCA Group

PROJECT TITLE: RELOCATION & CONSTRUCTION OF NEW RANGER STATION
 LOCATION OF PROJECT: BELUKAN VIA LOKUHOE RD 9, BELUKAN, BELUKAN INTERSECTION (AKAN KADALAN VILLAGE)
 CHECKED APPROVED BY: ERNE BOBBY ARIA
 ARCHITECT: ARCH. LUCYBIRDA N. WIDYAPANGRABAN
 DRAWN BY: ARCH. MARLEOU C. BUCILAYAN
 DATE: 6 AUGUST 2008

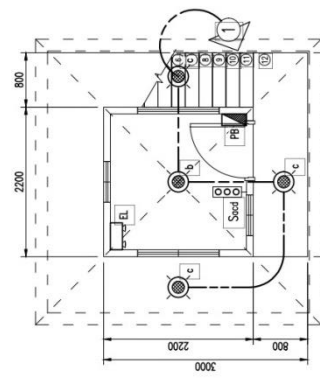
ELECTRICAL NOTES and LEGENDS :

1. ALL ELECTRICAL WORKS HEREIN SHALL BE DONE IN ACCORDANCE WITH THE NATIONAL ELECTRICAL CODES AND THE RULES AND REGULATIONS OF NATIONAL AND LOCAL AUTHORITIES CONCERNED IN THIS MATTER. THE ELECTRICAL WORKS SHALL BE DONE IN ACCORDANCE WITH THE RULES AND REGULATIONS OF THE UTILITY COMPANY CONCERNED.
2. THE CONTRACTOR SHALL VERIFY AND OBTAIN THE ACTUAL LOCATION OF THE CONCRETE TERMINAL POLE FOR CONNECTION TO THE POWER SUPPLY AND TELEPHONE SERVICE.
3. ALL INSTALLATION SHALL BE CONCEALED FROM VIEW. WIRING SHALL BE ENCASED IN FOLLOWING MANNER:
 - a. CONCEALED IN WALLS EXCEPT POWER AND TELEPHONE SERVICE ENTRANCE WHICH SHALL BE IN RIGID STEEL CONDUIT UNLESS OTHERWISE NOTED.
 - b. PULL BOXES OF APPROPRIATE SIZES SHALL BE PROVIDED, EVEN IF NOT INDICATED IN DRAWINGS TO ACCESS OR WIRES.
4. ALL MATERIALS TO BE USED SHALL BE APPROVED AND TYPE APPROPRIATE FOR BOTH LOCATION AND INTENDED USE.
5. LIGHT SWITCHES SHALL BE INSTALLED FOR OPERATION WITH VERTICAL MOTION.
6. ELECTRICAL INSTALLATION SHALL BE UNDER THE CLOSE SUPERVISION OF A DULY LICENSED ELECTRICAL ENGINEER.
7. WORKING HEIGHTS FOR ALL 8.1 PANEL BOARD - 1.70m FROM TOP OF PANEL BOARD TO FINISH FLOOR LINE SWITCH - 1.40 FLOOR CENTER OF DEVICE TO FINISH FLOOR

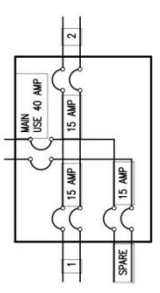
ELECTRICAL LEGENDS :



1 1st FLOOR LIGHTING LAYOUT
1:100 SCALE



2 2nd FLOOR LIGHTING LAYOUT
1:100 SCALE



4 PANEL BOARD SCHEDULE
1:1 SCALE



6 SERVICE ENTRANCE
1:1 SCALE

LOAD DESCRIPTION	NO. OF OUTLETS	VOLTAGE (VOLTS)	CURRENT (AMP)	CONDUIT SIZE (mm)	WIRE SIZE (mm ²)	BREAKER RATING (AMP)
1 LIGHTING	5	230	2.17	20 mm Ø	2.0	15 AMP
2 CONVENIENCE OUTLET	3	230	2.35	20 mm Ø	3.5	15 AMP
SPARE		230				15 AMP
TOTAL			4.52			

LOAD SCHEDULE	NO. OF OUTLETS	VOLTAGE (VOLTS)	CURRENT (AMP)	CONDUIT SIZE (mm)	WIRE SIZE (mm ²)	BREAKER RATING (AMP)
USE MAIN FEEDER CONDUCTOR	2	Ø6.0 mm ² THIN Stranded Copper Wire				
USE MAIN FEEDER CONDUCTOR	1	Ø6.0 mm ² THIN Stranded Copper Wire				
USE MAIN DISCONNECT	40	Amperes, 2 pole, 250 Volt Circuit Breaker				

5 LOAD SCHEDULE
1:1 SCALE

ABBREVIATION:

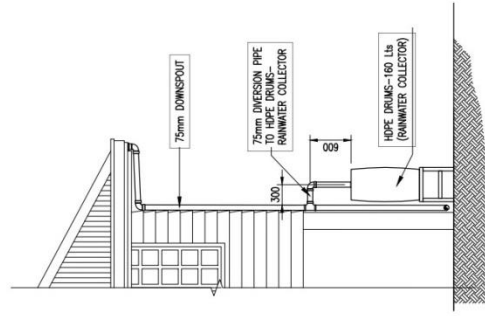
MS - METAL SHEET
MS-AJUST ON SITE

REMARKS:

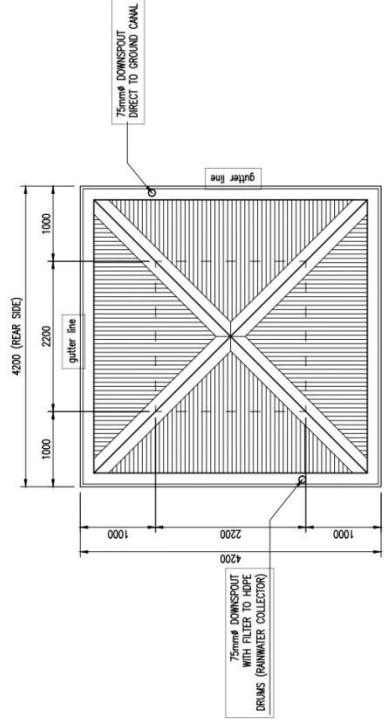
ELECTRICAL WORKS
 -SOURCE OF ELECTRICITY:
 -EXISTING BENCH POST NEAR
 -APPROXIMATELY 105-120 METERS
 -MATERIALS TO BE USED FOR THE
 CONNECTION OF ELECTRICITY FROM
 BENCH POST TO THE MAIN RANGER
 STATION SERVICE ENTRANCE TO BE
 LOCATED AT YELLOW TRIAL ARE NOT
 INCLUDED IN THE PROGRAM OF
 WORKS (POW).



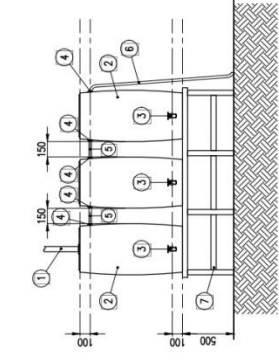
SHEET CONTENT:	LOAD SCHEDULES, LEGENDS, LIGHTING POWER LOADS, LOAD SCHEDULES PANEL BOARD, SERVICE ENTRANCE
PROJECT TITLE:	RELOCATION & CONSTRUCTION OF NEW RANGER STATION
LOCATION OF PROJECT:	YELLOW TRIAL, IREZ (BELOW INTERSECTION GOING TO KADALAN VILAGE)
NOTED BY:	ENGR. BOBBY T. ANA
CHECKED & APPROVED BY:	ENGR. LUTHERINA E. NIGOS-PANGANIBAN
DRAWN BY:	ARON MARLOU C. DALAYAN
DATE:	AUGUST 2020



1. DOWNSPOUT/RAINWATER COLLECTOR
NTS
SCALE 1/4"



2. STORM DRAIN LAYOUT
NTS
SCALE 1/4"



3. HDPE DRUMS - RAINWATER COLLECTOR
NTS
SCALE 1/4"

MARK	DESCRIPTION
1	75mm PIPE
2	HDPE DRUMS, 160 LT
3	1" HOSE BIB with 1/2" PIPE THREAD, with WASHER (INSIDE & OUTSIDE), COUPLING, BUSHING
4	OVERFLOW VALVE
5	1" PIPE THREAD with 1" HOSE ADAPTER, with WASHER (INSIDE & OUTSIDE) & LOCK NUT
6	1/2" PER PIPE
7	WATER HOSE CONNECTED TO OVERFLOW VALVE
	5/6 JHMC
	HDPE DRUMS WATER STAND (from JHMC STOCK)

REQUISITION OF THE PARTICIPANTS
 Office of the President
JHMC
 JOHN HAY MANAGEMENT CORPORATION
 SUBCOMPANY: _____
 AS SHOWN

PROJECT TITLE
RELOCATION & CONSTRUCTION OF NEW RANGER STATION

LOCATION OF PROJECT:
 YELLOW TRAIL, INEZ
 BELOW VIA LOOPHOME (NO. 9)
 INTERSECTION (going to BANGALON VILLAGE)

DATE: 14 AUGUST 2020

CHECKED APPROVED BY:
 ENGR. ROBERT V. AMIA

ARCHITECT:
 ARCH. LUCY WINDA M. INOS-PANGANIBAN

DATE: 14 AUGUST 2020

RENOVATION OF KADAKLAN CONTROL POINT

REVISION "2"



JOHN HAY MANAGEMENT CORPORATION

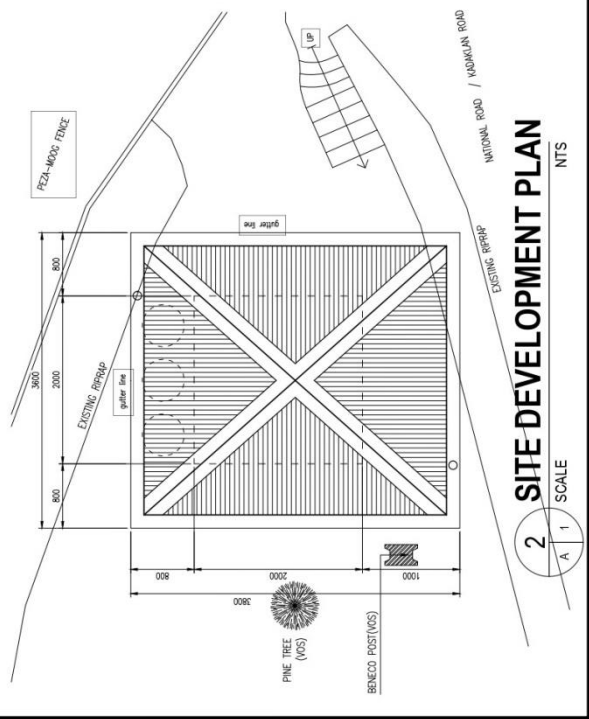
a member of THE BCDA GROUP

JOHN HAY SPECIAL ECONOMIC ZONE, BAGUIO CITY



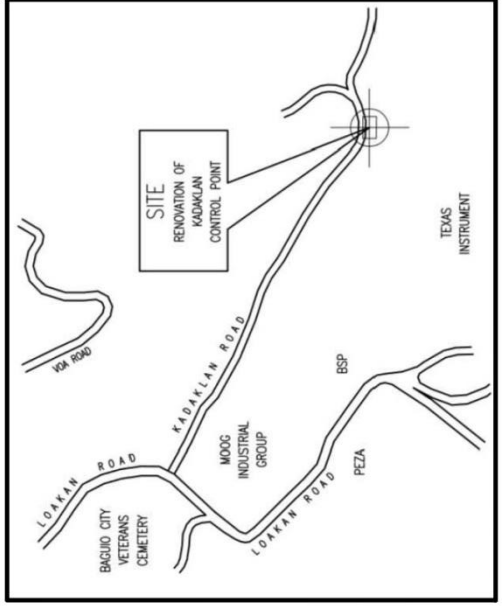
1 PERSPECTIVE

1 / A 1 SCALE



2 SITE DEVELOPMENT PLAN

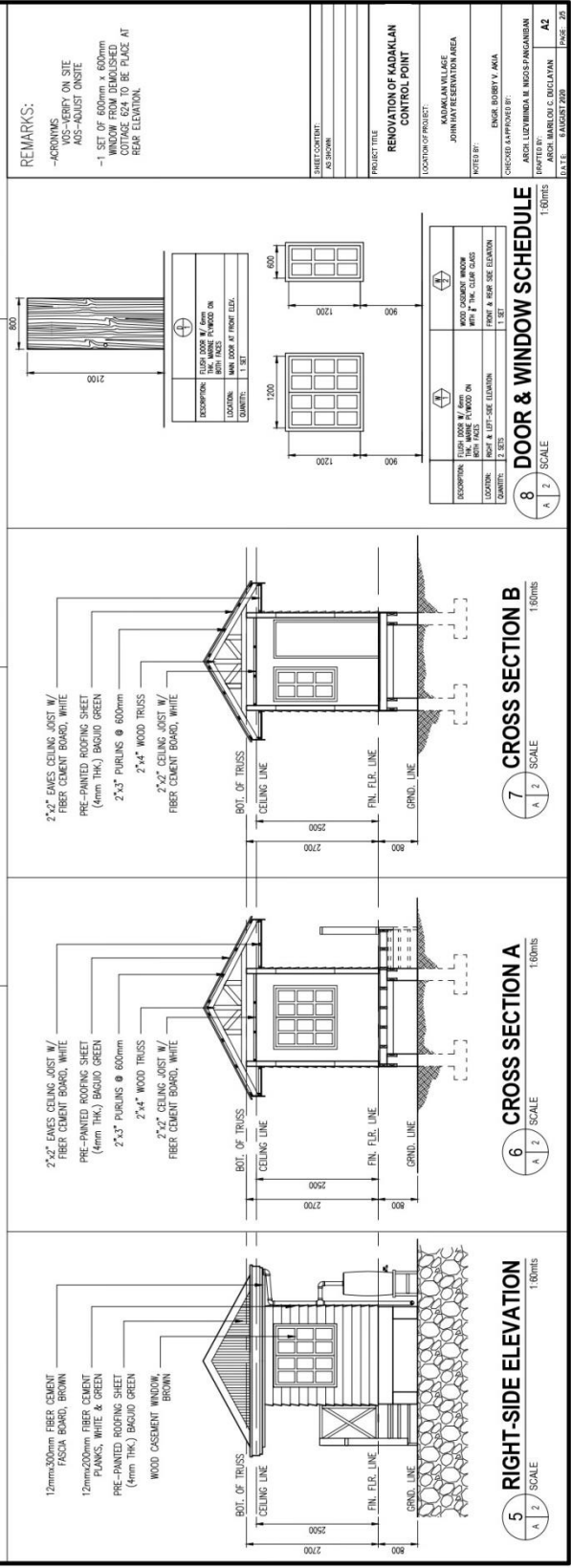
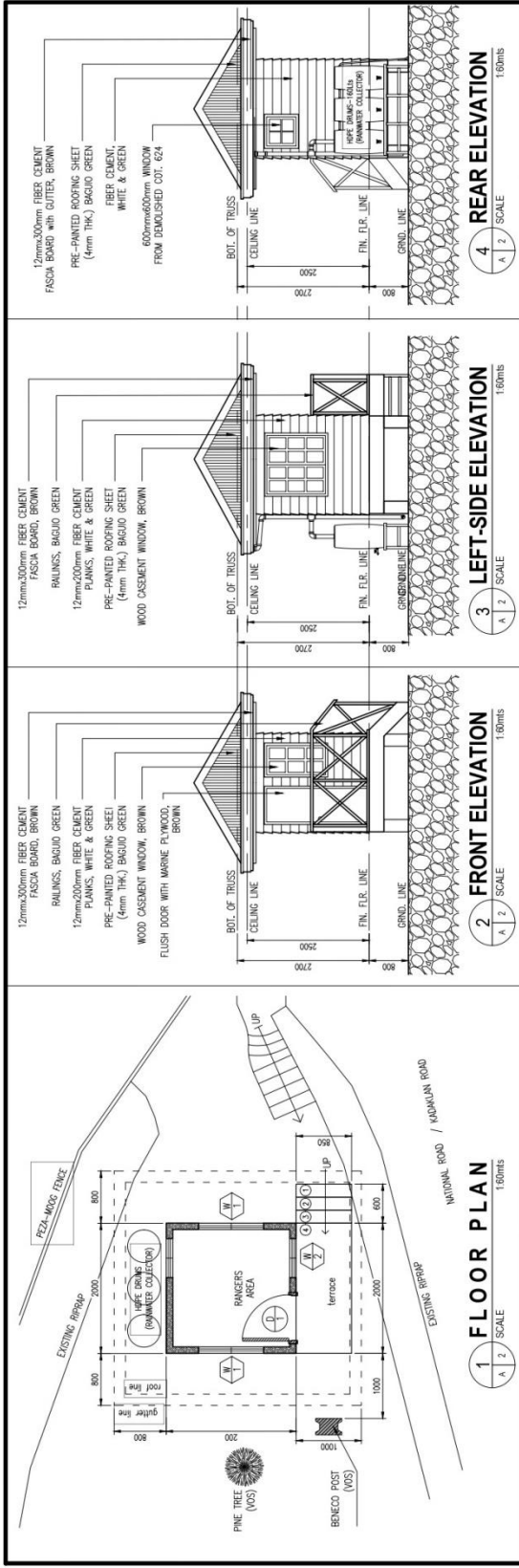
2 / A 1 SCALE



3 VICINITY MAP

3 / A 1 SCALE

SHEET COMMENT:	AS SHOWN
PROJECT TITLE:	RENOVATION OF KADAKLAN CONTROL POINT
LOCATION OF PROJECT:	KADAKLAN VILLAGE JOHN MATH PESTICIDE AREA
NOTED BY:	ENGR. BOBBY V. ANA
CHECKED & APPROVED BY:	ARCH. LUDWIGINA M. NIGOS-PANGANBAN
DRAWN BY:	ARCH. MARLOU C. DUCULAYAN
DATE:	14/05/2020



REMARKS:
 -ACROTNIMS
 VOS-VERIFY ON SITE
 AS-ADJUST ON SITE
 -1 SET OF 600mm x 600mm WINDOW FROM DEMOLISHED BUILDING TO BE PLACE AT REAR ELEVATION.

PROJECT TITLE: RENOVATION OF KADAKLAN CONTROL POINT

LOCATION OF PROJECT: MADAKLAN VILLAGE, JOHANNY RESERVATION AREA

NOTED BY: ENGINEER ROBERT V. ANIA

CHECKED & APPROVED BY: ARCHITECT LUCY WINDA M. INDOSPANGMABAN

REPORTED BY: ARCHITECT LUCY WINDA M. INDOSPANGMABAN

DATE: 15 AUGUST 2024

SCALE: 1:60 (SCALE)

8 DOOR & WINDOW SCHEDULE

NO.	DESCRIPTION	LOCATION	QTY
1	WOOD CASEMENT WINDOW WITH 1" MARINE PLYWOOD ON BOTH SIDES	FRONT & REAR SIDE ELEVATION	1 SET
2	WOOD CASEMENT WINDOW WITH 1" MARINE PLYWOOD ON BOTH SIDES	FRONT & REAR SIDE ELEVATION	1 SET

SCALE: 1:60 (SCALE)

7 CROSS SECTION B

SCALE: 1:60 (SCALE)

6 CROSS SECTION A

SCALE: 1:60 (SCALE)

5 RIGHT-SIDE ELEVATION

SCALE: 1:60 (SCALE)

4 REAR ELEVATION

SCALE: 1:60 (SCALE)

3 LEFT-SIDE ELEVATION

SCALE: 1:60 (SCALE)

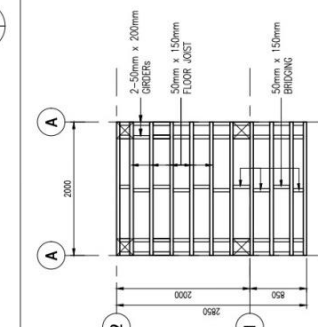
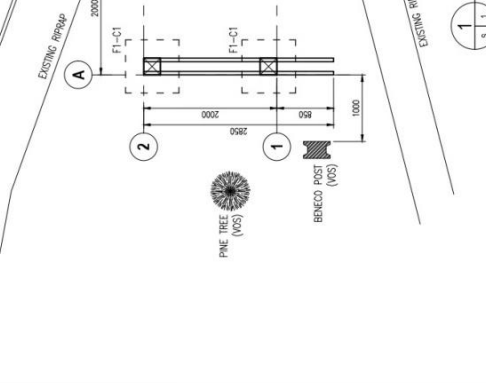
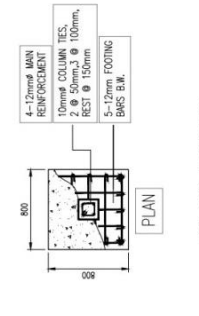
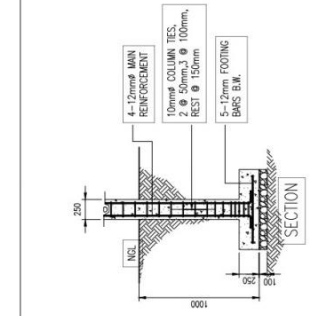
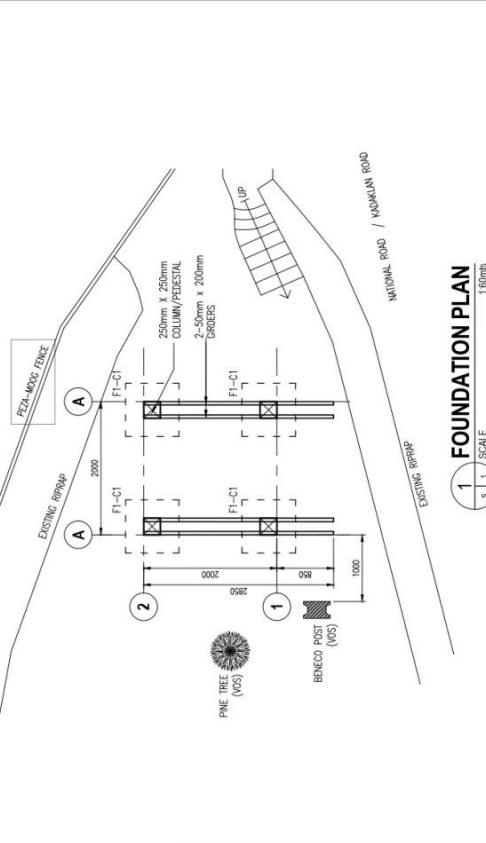
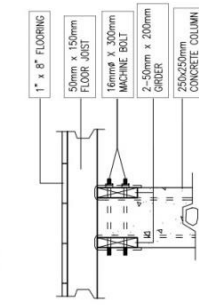
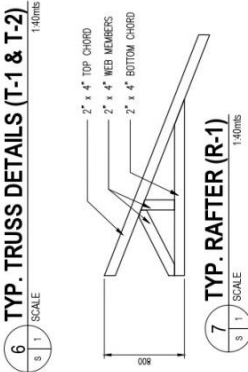
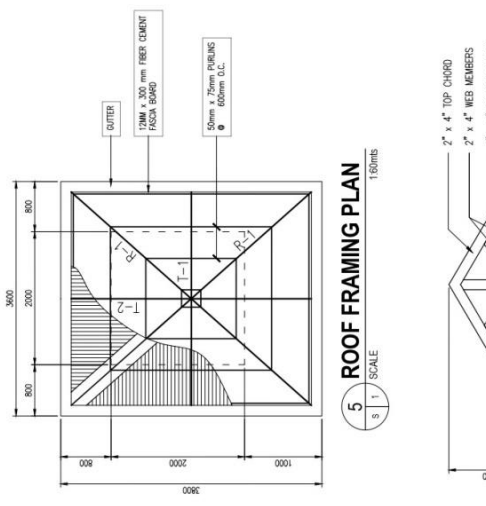
2 FRONT ELEVATION

SCALE: 1:60 (SCALE)

1 FLOOR PLAN

SCALE: 1:60 (SCALE)

REMARKS:
 ACRONYMS
 VOS=VERIFY ON SITE
 AOS=ADJUST ONSITE

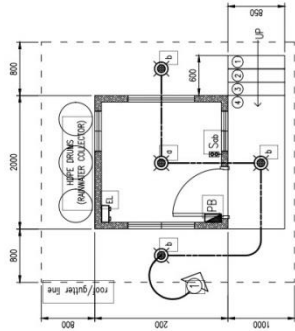
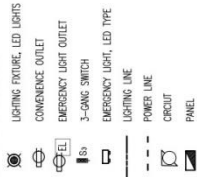


SHEET CONTENT:	AS SHOWN
PROJECT TITLE:	RENOVATION OF KADAKLAN CONTROL POINT
LOCATION OF PROJECT:	KADAKLAN RELIAGE JOHN WAY RESERVATION AREA
NOTED BY:	ENGR. ROBERT V. ANA
CHECKED BY:	ENGR. ROBERT V. ANA
DESIGNED BY:	ARCH. LEYDWINA M. ROSO-PANGABIAN
PROJECT NO.:	ARCH. MARILOU C. DUCLAYAN
D.A.T.E.:	FEBRUARY 2020
PAGE:	35

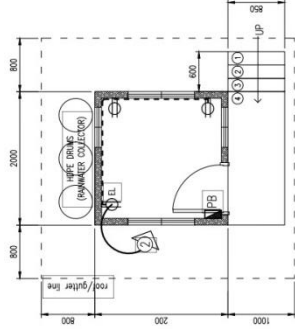
ELECTRICAL NOTES and LEGENDS :

- ALL ELECTRICAL WORKS HEREIN SHALL BE DONE IN ACCORDANCE WITH THE PHILIPPINE ELECTRICAL CODE WITH THE RULES AND REGULATIONS OF THE LOCAL AUTHORITIES CONCERNED IN THE ENFORCEMENT OF ELECTRICAL LAWS AND WITH THE RULES AND REGULATIONS OF THE UTILITY COMPANY CONCERNED.
- THE CONTRACTOR SHALL COPY THE CONCRETE REINFORCEMENT FOR CONNECTION TO THE POWER SUPPLY AND TELEPHONE SERVICE.
- ALL INSTALLATION SHALL BE CONCEALED FROM VIEW. WIRING SHALL BE ENCASED IN POLYVINYL CHLORIDE (PVC) CONDUIT. ALL SERVICE ENTRANCE WHICH SHALL BE IN RIGID STEEL CONDUIT UNLESS OTHERWISE NOTED.
- PULL BOXES OF APPROPRIATE SIZES SHALL BE PROVIDED, EVEN IF NOT INDICATED IN DRAWINGS TO BE IDENTIFIED BY THE NUMBER OF SPACES OR WIRES.
- MATERIALS TO BE USED SHALL BE OF THE APPROPRIATE TYPE, APPROPRIATE FOR BOTH LOCATION AND INTENDED USE.
- LIGHT SWITCHES SHALL BE INSTALLED FOR OPERATION WITH VERTICAL MOTION.
- ELECTRICAL INSTALLATION SHALL BE UNDER THE DIRECT SUPERVISION OF A DULY LICENSED ELECTRICAL ENGINEER.
- WIRING HEIGHTS FOR ALL WIRING DEVICES:
 - PANEL BOARD - 1.70m FROM FINISH FLOOR TO FINISH FLOOR LINE
 - LIGHT SWITCH - 1.40 FROM CENTER OF SWITCH TO FINISH FLOOR

ELECTRICAL LEGENDS :



1 LIGHTING LAYOUT
1:1 SCALE

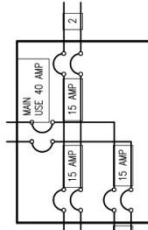


2 POWER LAYOUT
1:1 SCALE

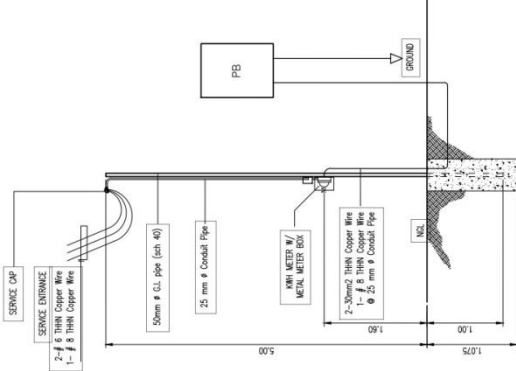
CIRCUIT NO.	LOAD DESCRIPTION	LOAD SCHEDULE				CONDUIT WIRE SIZE (mm)
		NO. OF OUTLETS	POWER (VA)	VOLTAGE (V)	CURRENT (AMP)	
1	LIGHTING	4	400	230	1.74	15 AMP 2.0
2	CONVENIENCE OUTLET	3	540	230	2.35	15 AMP 3.5
SPARE						15 AMP 3.5
		TOTAL	940		4.09	

USE:
 MAIN FEEDER CONDUCTOR 2 - #6.0 mm² THHN Stranded Copper Wire
 GROUND CONDUCTOR 1 - #6.0 mm² THHN Stranded Copper Wire
 MAIN DISCONNECT 40 Amperes, 2 pole, 250 Volt, Circuit Breaker

3 LOAD SCHEDULE
1:1 SCALE

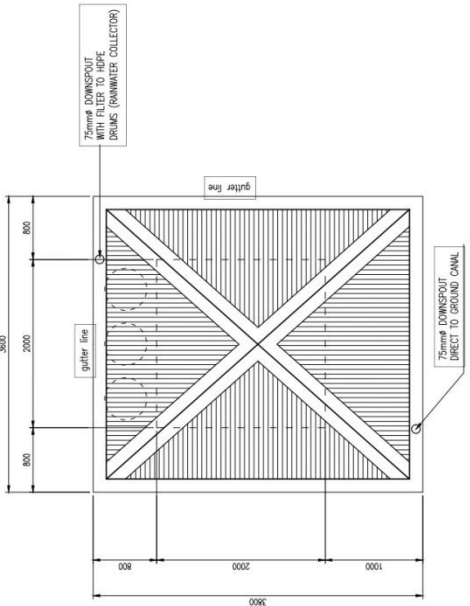


4 PANEL BOARD SCHEDULE
1:1 SCALE

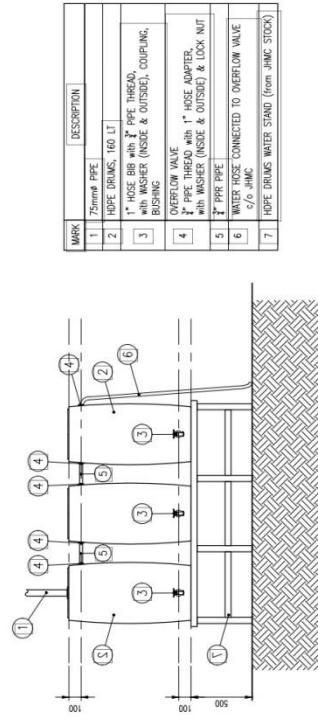


5 SERVICE ENTRANCE
1:1 SCALE

SHEET NO. 25/3000
 PROJECT TITLE: RENOVATION OF KADAKLAN CONTROL POINT
 LOCATION OF PROJECT: KADAKLAN VILLAGE JOHN MATEORAN ALFA
 NOTES BY: ENGR. ROBERT Y. AMA
 CHECKED & APPROVED BY: ARDJI LUDWIG M. INOCS PANGANIBAM
 DRAFTED BY: ARDJI MARILOU C. BUCAYAN
 DATE: AUGUST 2020

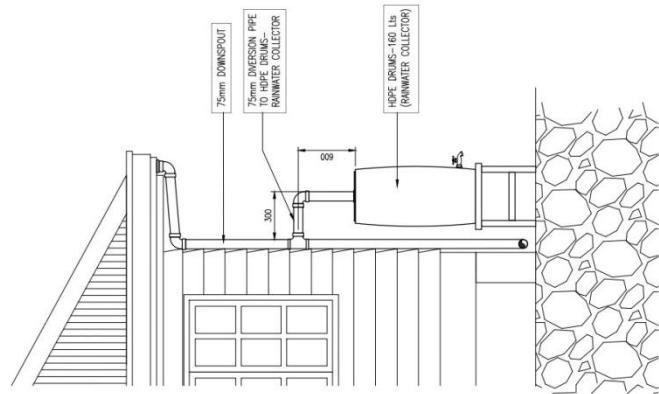


2 STORM DRAIN LAYOUT
 NTS
 P 1 / SCALE



MARK	DESCRIPTION
1	75mm ϕ PIPE
2	HDPE DRUMS, 160 LT
3	1" HOSE BBS WITH 1" PIPE THREAD, WITH WASHER (INSIDE & OUTSIDE), COUPLING, BUSHING
4	OVERFLOW VALVE
5	1" PIPE THREAD WITH 1" HOSE ADAPTER, WITH WASHER (INSIDE & OUTSIDE) & LOCK NUT
6	1" PIPE PIPE
7	WATER HOSE CONNECTED TO OVERFLOW VALVE 5/6 JHMC
	HDPE DRUMS WATER STAND (from JHMC STOCK)

3 HDPE DRUMS - RAINWATER COLLECTOR
 NTS
 P 1 / SCALE



1 DOWNSPOUT/RAINWATER COLLECTOR
 NTS
 P 1 / SCALE

Annex C

Bill of Quantities : Relocation and Construction of Kadaclan Ranger Station

Annex D

Bill of Quantities : Renovation of Kadaclan Control Point