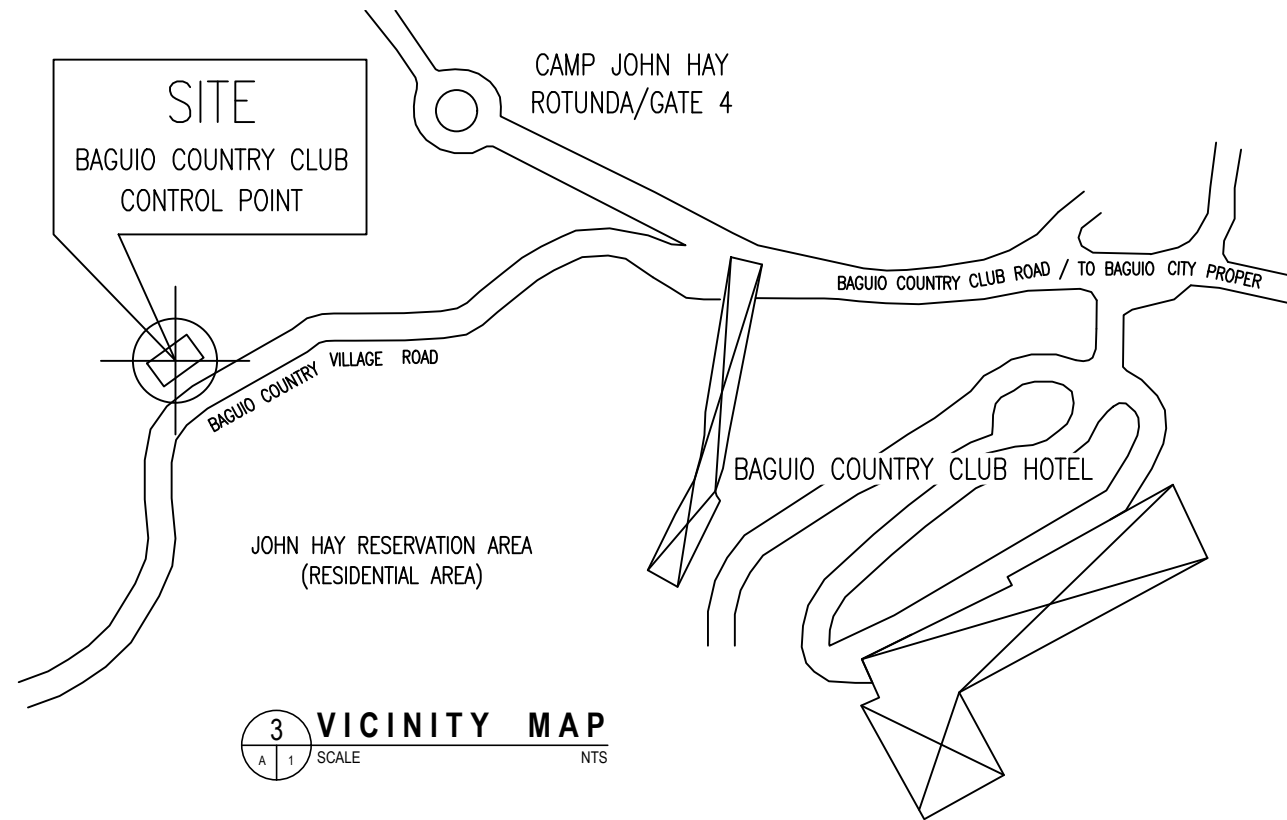



2 SITE DEVELOPMENT PLAN
SCALE NTS



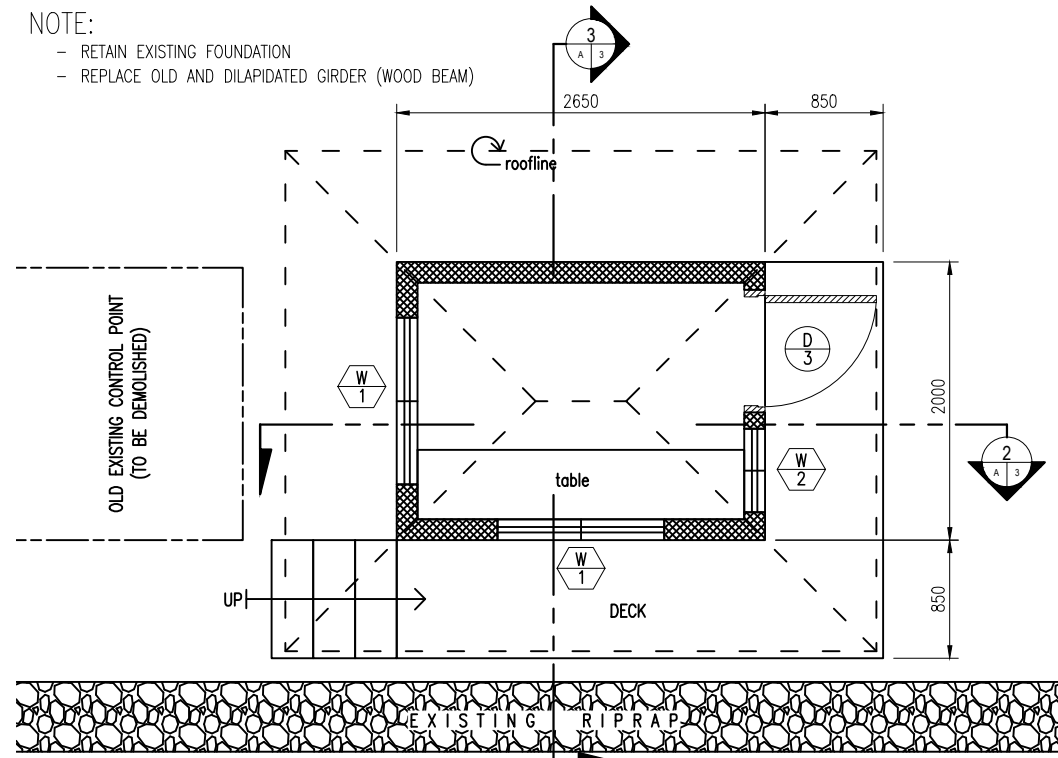
3 VICINITY MAP
SCALE NTS

1 PERSPECTIVE
SCALE

SHEET CONTENT:	
PERSPECTIVE	
SITE DEVELOPMENT PLAN	
VICINITY MAP	
Republic of the Philippines Office of the President  JOHN HAY MANAGEMENT CORPORATION	
PROJECT TITLE	
RENOVATION OF THE BAGUIO COUNTRY CLUB CONTROL POINT	
NOTED BY:	
ENGR. BOBBY V. AKIA	
CHECKED & APPROVED BY:	
ARCH. LUZVIMINDA M. NIGOS-PANGANIBAN	
DRAFTED BY:	A1
ARCH. MARILOU C. DUCLAYAN	
DATE: 00 AUGUST 2019	PAGE: 1 of 5

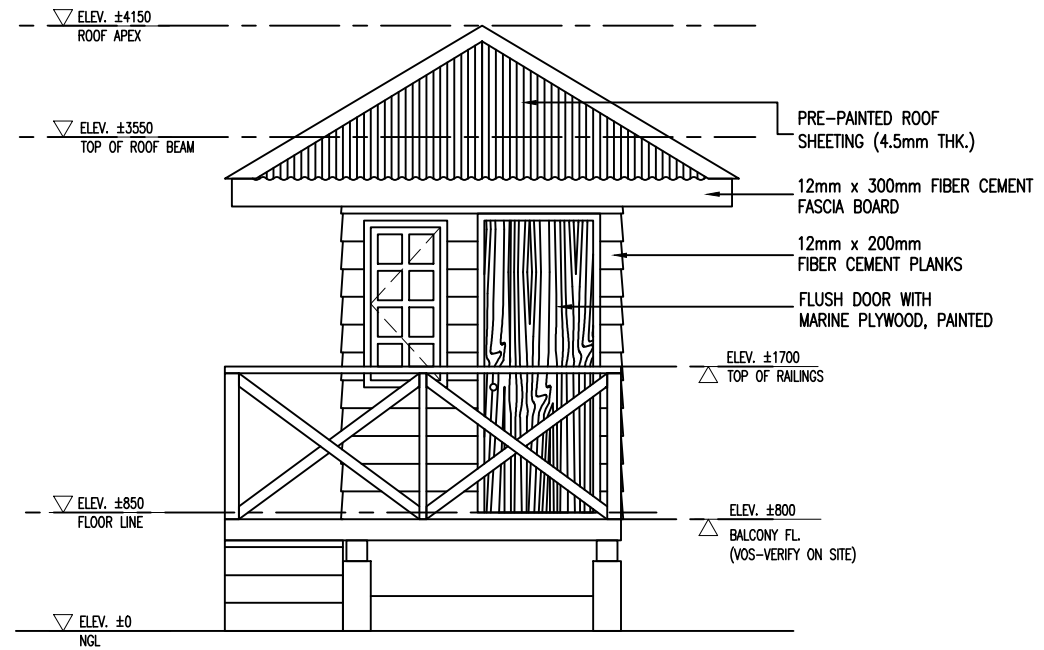
NOTE:

- RETAIN EXISTING FOUNDATION
- REPLACE OLD AND DILAPIDATED GIRDER (WOOD BEAM)

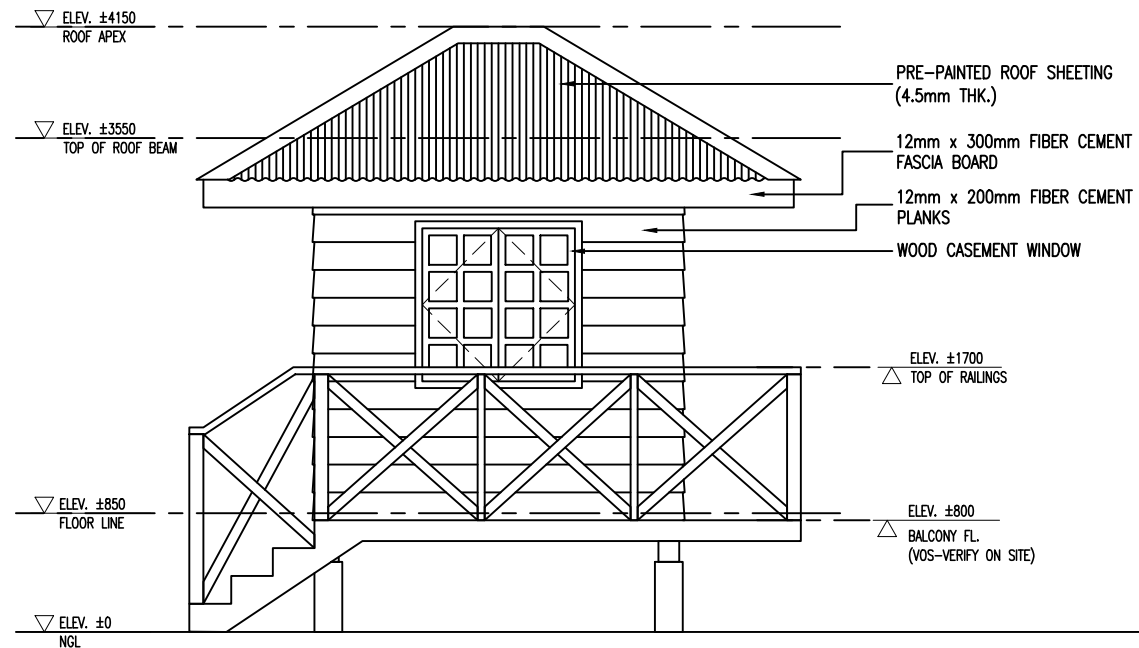


← TO BRGY. COUNTRY CLUB VILLAGE (RROW)

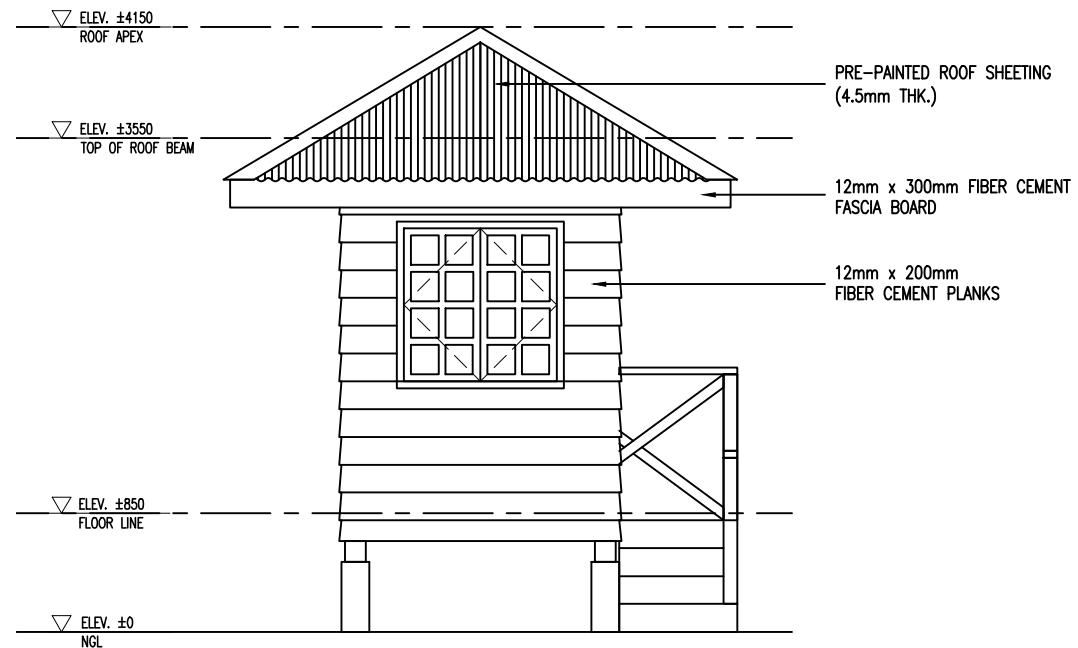
1 FRONT ELEVATION
SCALE 1:50mts



2 RIGHT-SIDE ELEVATION
SCALE 1:50mts

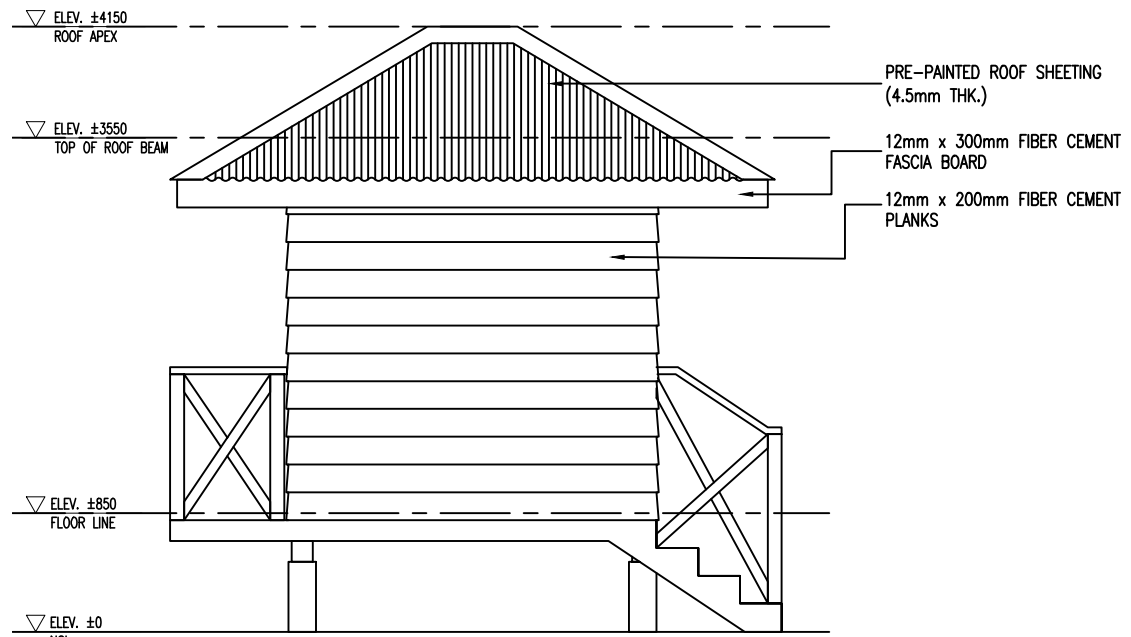


3 FRONT ELEVATION
SCALE 1:50mts

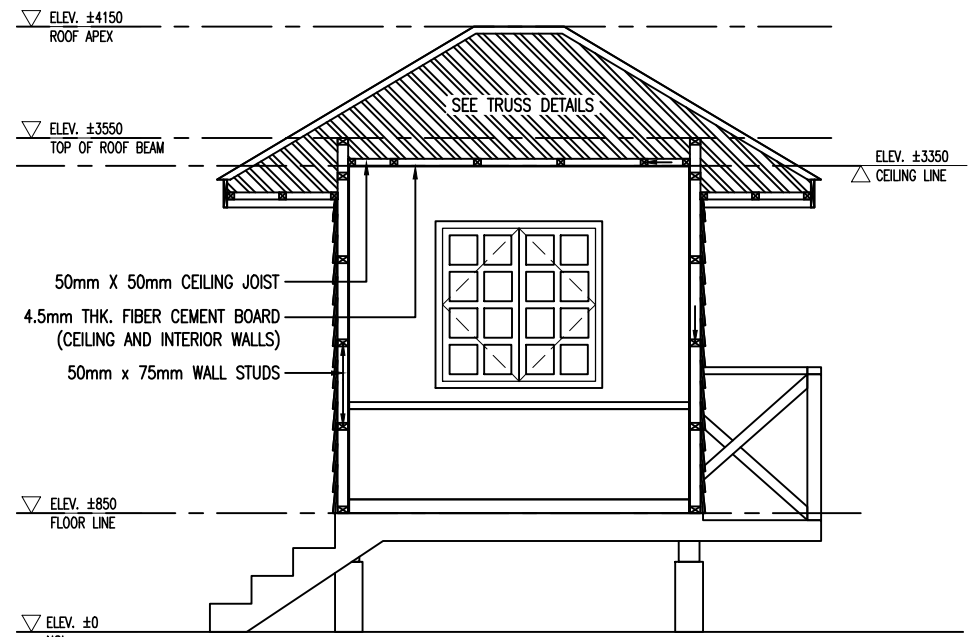


4 LEFT-SIDE ELEVATION
SCALE 1:50mts

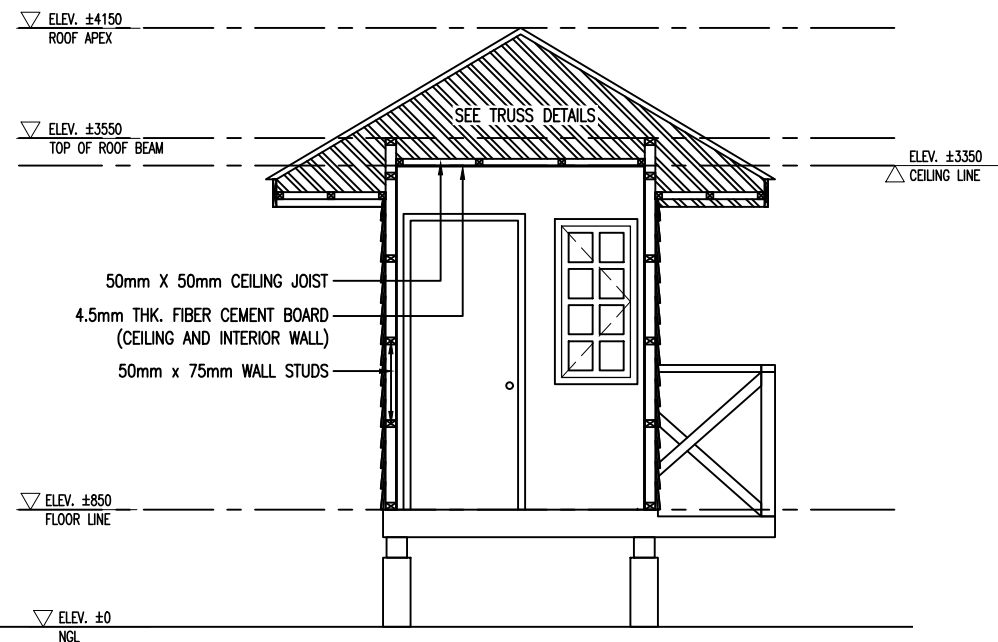
SHEET CONTENT:	
FLOORPLAN	
ELEVATIONS	
<p>Republic of the Philippines Office of the President</p> <p>JHMC JOHN HAY MANAGEMENT CORPORATION</p> <p>PROJECT TITLE RENOVATION OF THE BAGUIO COUNTRY CLUB CONTROL POINT</p>	
NOTED BY:	
ENGR. BOBBY V. AKIA	
CHECKED & APPROVED BY:	
ARCH. LUZVIMINDA M. NIGOS-PANGANIBAN	
DRAFTED BY:	A2
ARCH. MARILOU C. DUCLAYAN	
DATE: 00 AUGUST 2019	PAGE: 2 of 5



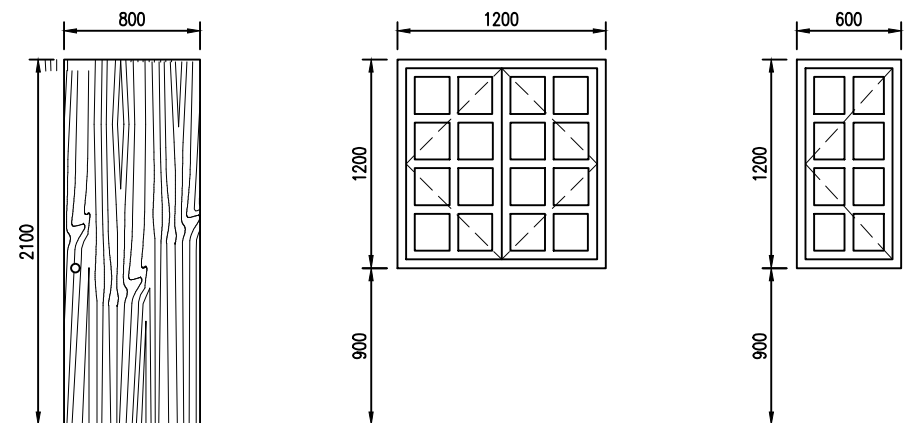
1 REAR ELEVATION
SCALE 1:50mts



2 LONGITUDINAL SECTION
SCALE 1:50mts



3 CROSS SECTION
SCALE 1:50mts



	D 3	W 1	W 2
DESCRIPTION:	FLUSH DOOR W/ 6mm THK. MARINE PLYWOOD ON BOTH FACES (PAINTED)	WOOD CASEMENT WINDOW WITH 1/8" THK. CLEAR GLASS	WOOD CASEMENT WINDOW WITH 1/8" THK. CLEAR GLASS
LOCATION:	MAIN DOOR AT RIGHT-SIDE ELEV.	FRONT & LEFT-SIDE ELEVATION	RIGHT-SIDE ELEVATION
QUANTITY:	1 SET	2 SETS	1 SET

4 DOOR and WINDOW SCHEDULE
SCALE 1:40mts

SHEET CONTENT:

ELEVATION

SECTIONS

DOOR AND WINDOW SCHEDULE

Republic of the Philippines
Office of the President

JHMC
JOHN HAY MANAGEMENT CORPORATION

PROJECT TITLE
RENOVATION OF THE BAGUIO COUNTRY CLUB CONTROL POINT

NOTED BY:
ENGR. BOBBY V. AKIA

CHECKED & APPROVED BY:
ARCH. LUZVIMINDA M. NIGOS-PANGANIBAN

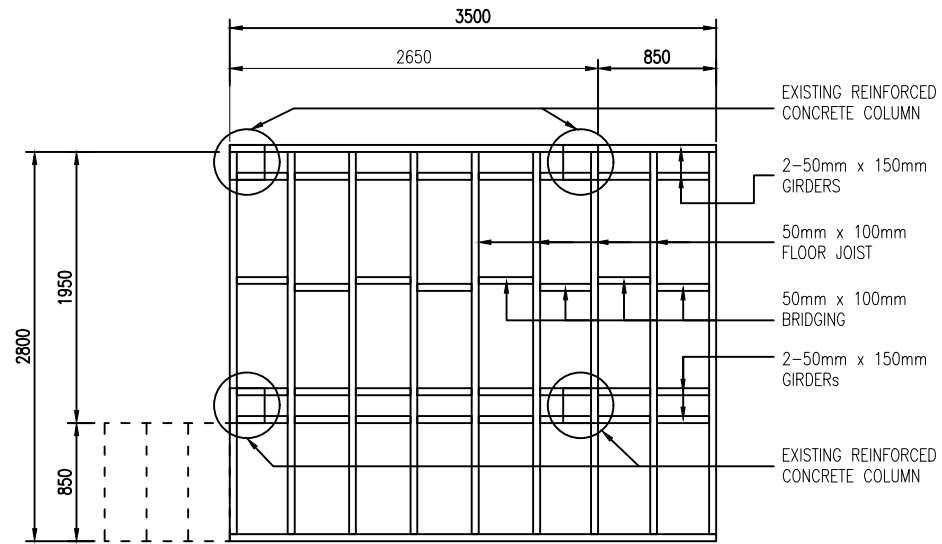
DRAFTED BY:
ARCH. MARILOU C. DUCLAYAN

D A T E: 00 AUGUST 2019

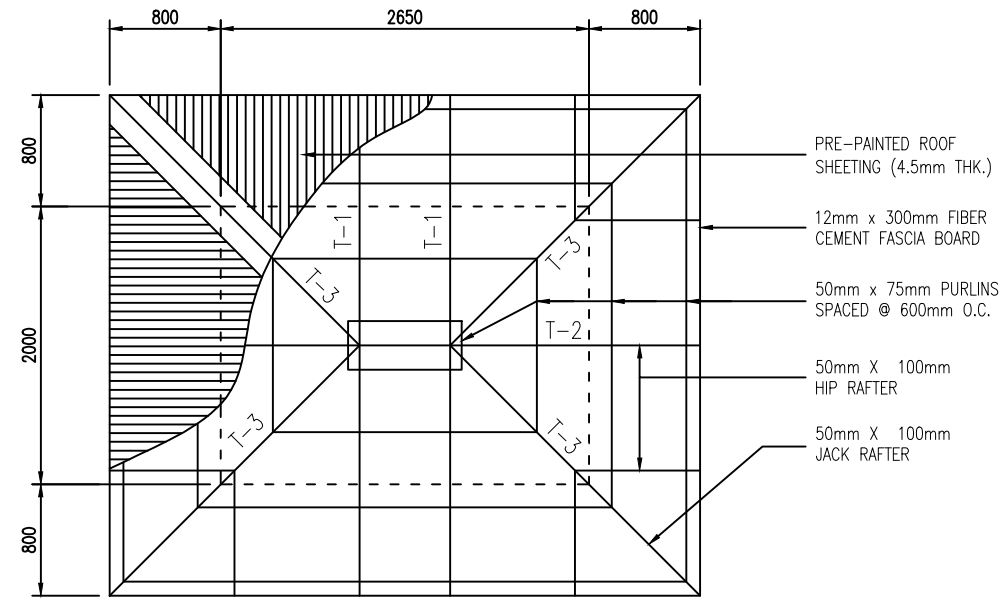
PAGE: 3 of 5

NOTE:

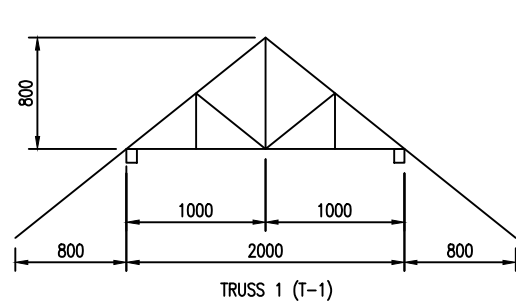
- RETAIN EXISTING REINFORCED CONCRETE COLUMN
- REPLACE OLD AND DILAPIDATED GIRDER (WOOD BEAM)
- STRUCTURAL SYSTEM : BALLOON FRAMING



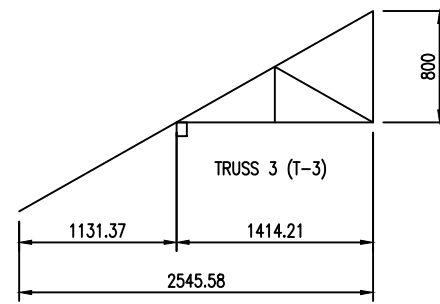
1 FLOOR FRAMING PLAN
SCALE 1:50mts



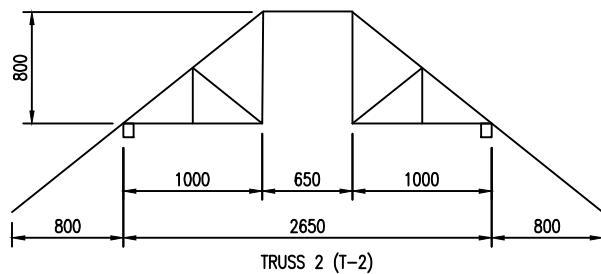
2 ROOF FRAMING PLAN
SCALE 1:50mts



TRUSS 1 (T-1)



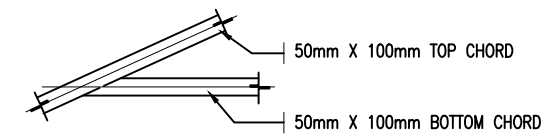
TRUSS 3 (T-3)



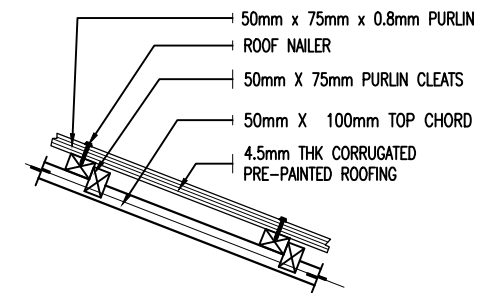
TRUSS 2 (T-2)

TABULATION OF TRUSS DETAILS						
MARK	DESCRIPTION	QTY	UNIT	MEMBER DESCRIPTION		
				TOP CHORD	BOTTOM CHORD	WEB MEMBERS
T-1	TRUSS 1	2	SET	50mm x 100mm	50mm x 100mm	50mm x 75mm
T-2	TRUSS 2	1	SET	50mm x 100mm	50mm x 100mm	50mm x 75mm
T-3	TRUSS 3	4	SET	50mm x 100mm	50mm x 100mm	50mm x 75mm

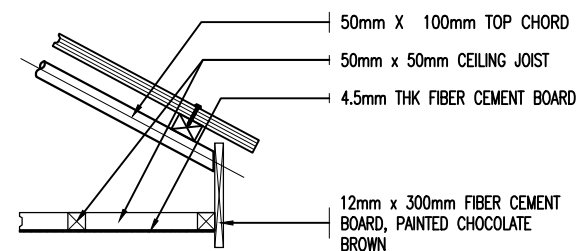
3 TRUSS DIAGRAM / DETAILS
SCALE 1:20mts



4 TOP & BOTTOM CHORD CONNECTION
SCALE 1:20mts



5 PURLIN DETAILS
SCALE 1:20mts

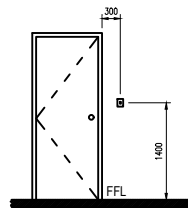


6 ROOF EAVES DETAILS
SCALE 1:20mts

SHEET CONTENT:	
FLOOR FRAMING PLAN	
ROOF FRAMING PLAN	
TRUSS DETAILS	
Republic of the Philippines Office of the President JHMC JOHN HAY MANAGEMENT CORPORATION	
NOTED BY: ENGR. BOBBY V. AKIA	
APPROVED BY: ARCH. LUZVIMINDA M. NIGOS-PANGANIBAN	
CHECKED BY: ENGR. FERDINAND L. FIGUERRES	
DRAFTED BY: ARCH. MARILOU C. DUCLAYAN	S1
DATE: 00 AUGUST 2019	PAGE: 4 of 5

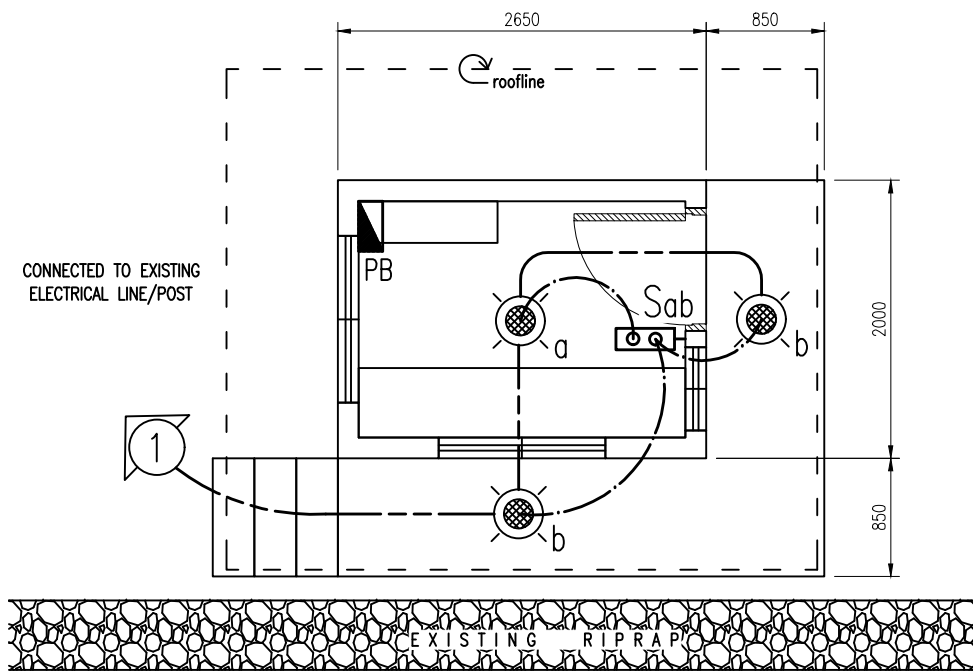
ELECTRICAL NOTES and LEGENDS :

1. ALL ELECTRICAL WORKS HEREIN SHALL BE DONE IN ACCORDANCE WITH THE PHILIPPINE ELECTRICAL CODE, WITH THE RULES AND REGULATIONS OF NATIONAL AND LOCAL AUTHORITIES CONCERNED IN THE ENFORCEMENT OF ELECTRICAL LAWS AND WITH THE RULES AND REGULATIONS OF THE UTILITY COMPANY CONCERNED
2. THE CONTRACTOR SHALL VERIFY AND ORIENT THE ACTUAL LOCATION OF THE CONCRETE TERMINAL POLE FOR CONNECTION TO THE POWER SUPPLY AND TELEPHONE SERVICE.
3. ALL INSTALLATION SHALL BE CONCEALED FROM VIEW, WIRING SHALL BE ENCASED IN POLYVINYL CHLORIDE (PVC) SCHEDULE 40 EXCEPT POWER AND TELEPHONE SERVICE ENTRANCE WHICH SHALL BE IN RIGID STEEL CONDUIT UNLESS OTHERWISE NOTED.
4. PULL BOXES OF APPROPRIATE SIZES SHALL BE PROVIDED, EVEN IF NOT INDICATED IN DRAWINGS TO ACCOMMODATE THE NUMBER OF SPLICES OR WIRES.
5. ALL MATERIALS TO BE USED SHALL BE NEW AND APPROVED TYPE APPROPRIATE FOR BOTH LOCATION AND INTENDED USE.
6. LIGHT SWITCHES SHALL BE INSTALLED FOR OPERATION WITH VERTICAL MOTION.
7. ELECTRICAL INSTALLATION SHALL BE UNDER THE DIRECT SUPERVISION OF A DULY LICENSED ELECTRICAL ENGINEER.
8. MOUNTING HEIGHTS FOR ALL WIRING DEVICES:
 - 8.1.1. PANEL BOARD - 1.70m FROM TOP OF PANEL BOARD TO FINISH FLOOR LINE
 - 8.1.2. LIGHT SWITCH - 1.40 FROM CENTER OF DEVICE TO FINISH FLOOR

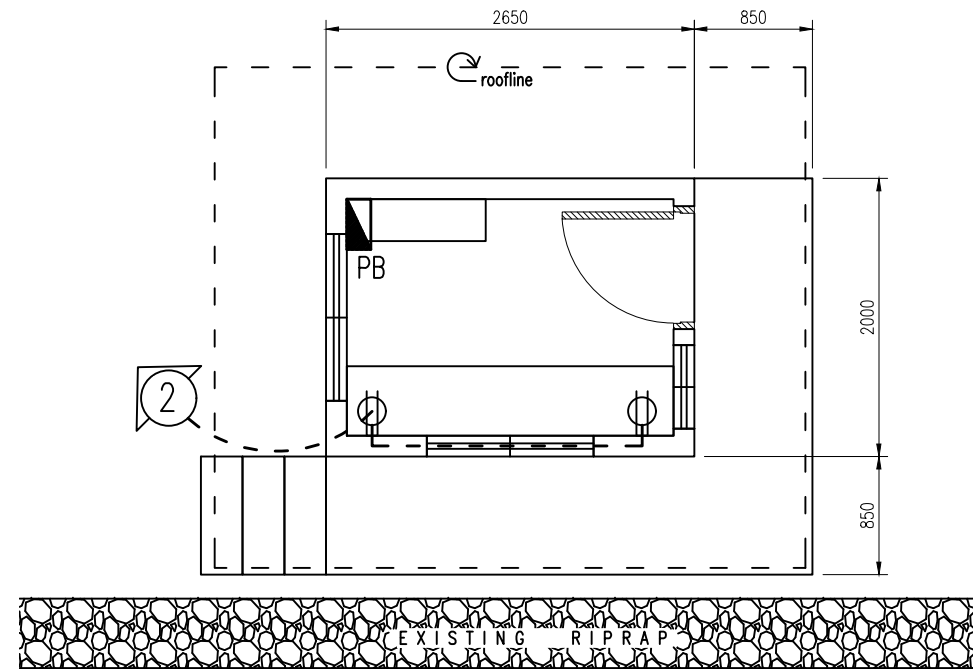


ELECTRICAL LEGENDS :

	LIGHTING FIXTURE, LED LIGHTS
	2-GANG SWITCH
	1-GANG SWITCH
	LIGHTING LINE
	POWER LINE
	CIRCUIT
	PANEL BOX



← TO BRGY. COUNTRY CLUB VILLAGE (RROW)
1 LIGHTING LAYOUT
 SCALE 1:50mts

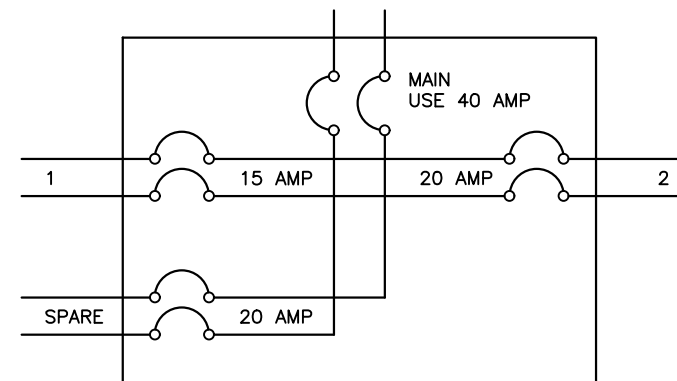


← TO BRGY. COUNTRY CLUB VILLAGE (RROW)
2 POWER LAYOUT
 SCALE 1:50mts

LOAD SCHEDULE								
CIRCUIT NO.	LOAD DESCRIPTION	NO. OF OUTLETS	POWER (VA)	VOLTAGE (VOLTS)	CURRENT (AMP)	BREAKER RATING	WIRE SIZE (mm ²)	CONDUIT SIZE (mm)
1	LIGHTING	3	300	230	1.30	15 AMP	2.0	20 mm ϕ
2	CONVENIENCE OUTLET	2	360	230	1.56	20 AMP	2.0	20 mm ϕ
SPARE				230		20 AMP		
TOTAL			660		2.86			

USE:
 MAIN FEEDER CONDUCTOR 2 - #8.0 mm² THHN Stranded Copper Wire
 GROUND CONDUCTOR 1 - #5.5 mm² THHN Stranded Copper Wire
 MAIN DISCONNECT 40 Amperes, 2 pole, 250 Volt Circuit Breaker

3 LOAD SCHEDULE
 SCALE NTS



4 PANEL BOARD SCHEDULE
 SCALE NTS

SHEET CONTENT:	
ELECTRICAL NOTES and LEGENDS	
LIGHTING LAYOUT	
POWER LAYOUT	
LOAD AND PANEL BOARD SCHEDULE	
Republic of the Philippines Office of the President JHMC JOHN HAY MANAGEMENT CORPORATION	
PROJECT TITLE	
RENOVATION OF THE BAGUIO COUNTRY CLUB CONTROL POINT	
NOTED BY:	
ENGR. BOBBY V. AKIA	
CHECKED & APPROVED BY:	
ARCH. LUZVIMINDA M. NIGOS-PANGANIBAN	
DRAFTED BY:	E1
ARCH. MARILOU C. DUCLAYAN	
DATE: 00 AUGUST 2019	PAGE: 5 of 5